

7-22A

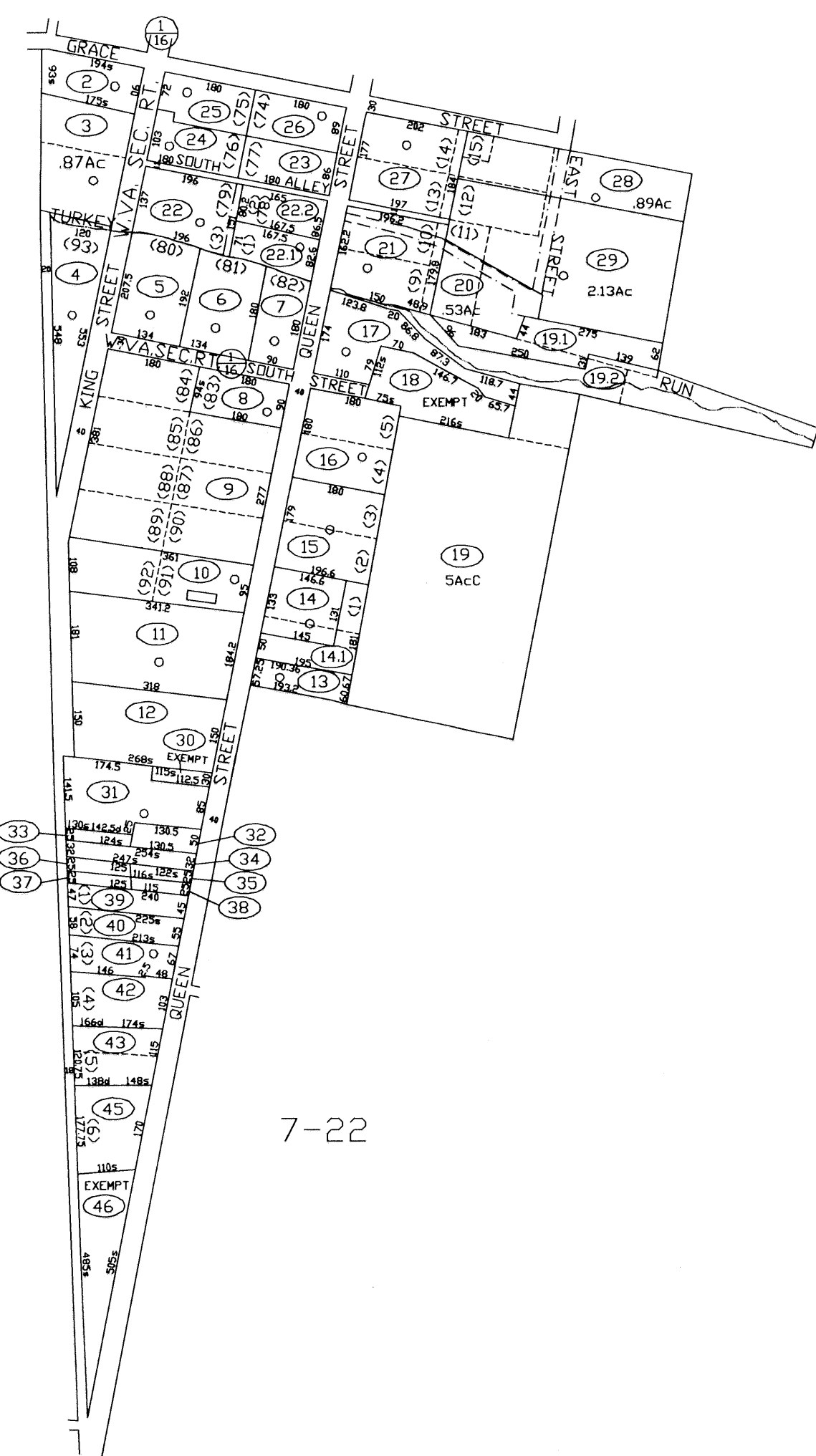
7-22

7-22

7-22

7-22

7-22



FOR TAX PURPOSES ONLY
 PREPARED BY
JEFFERSON COUNTY ASSESSORS OFFICE
 Note: Maps are updated constantly by the mapper however, maps are printed only at the beginning of the fiscal year (July)

LEGEND	
PROPERTY LINE	-----
CENTER LINE	-----
CORPORATION LINE	-----
DISTRICT LINE	-----
COUNTY LINE	-----
STREAM	-----
EASEMENT	-----
ORIGINAL LOT LINE	-----
DEED LOT NUMBER	(15)
PARCEL OR INDEX NUMBER	(24)
IMPROVEMENT	○
RAILROAD	—+—+—+—
DISTRICT NUMBER	(7)
SCALED DIMENSION	5

REVISIONS
 Revisions outgrew this space and are now maintained in a database.

KEY MAP		
22	22A	22
22	22B	22
22	22	22

COUNTY OF JEFFERSON
 OFFICE OF ASSESSOR
 CHARLES TOWN, W. VA.

MIDDLEWAY DISTRICT
DISTRICT 7
MAP NUMBER 22B
 DATE, AERIAL PHOTOGRAPHY: 1962
 PHOTO NO: 87,113
 DATE, MAP: AUGUST, 1990
 SCALE: 1"=200'