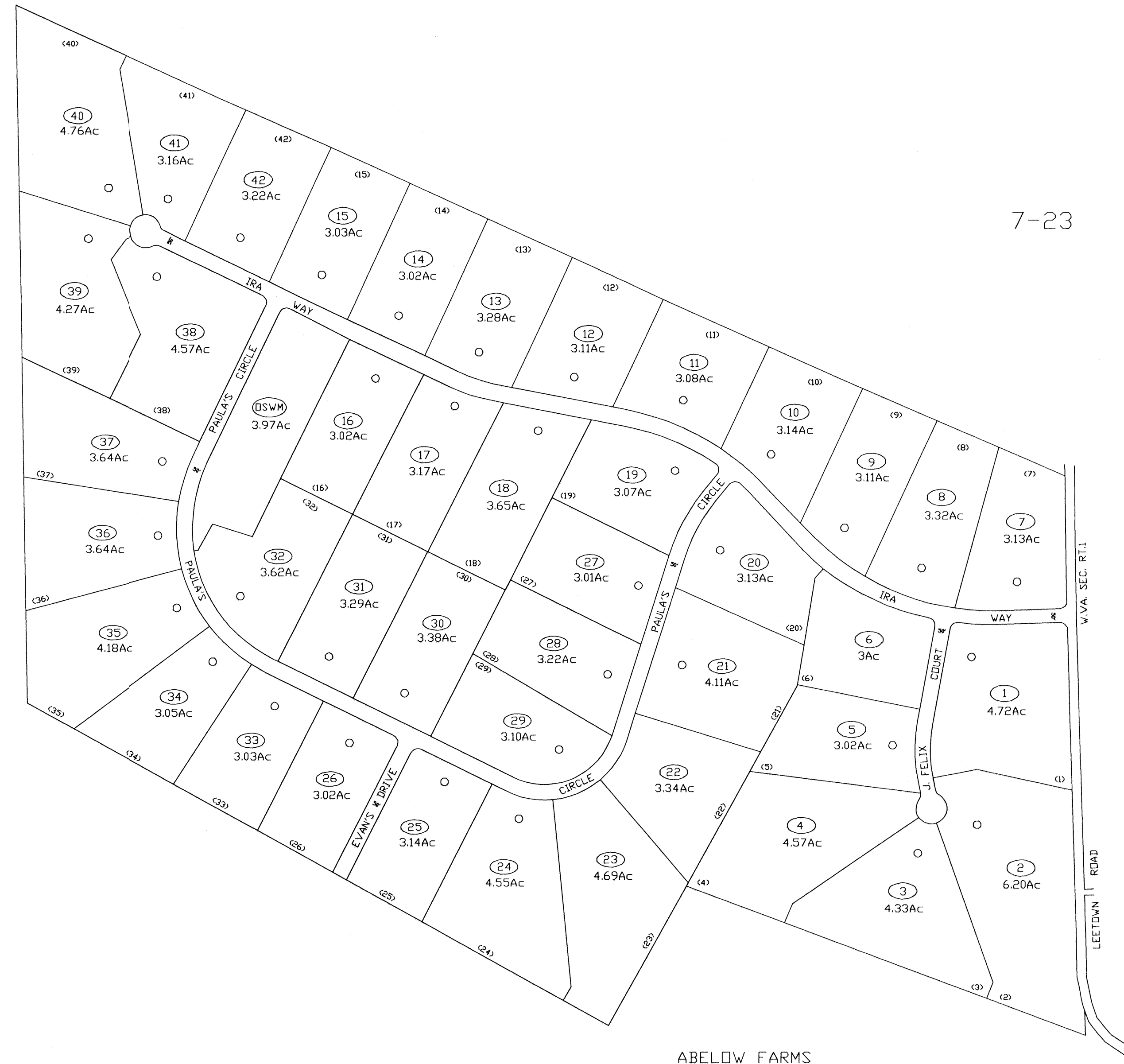


7-23

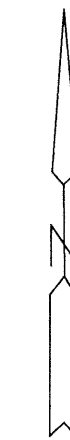
7-23

7-24

7-25



ABELOW FARMS



FOR TAX PURPOSES ONLY
 PREPARED BY
JEFFERSON COUNTY ASSESSORS OFFICE
 Note: Maps are updated constantly by the mapper however, maps are printed only at the beginning of the fiscal year (July)

LEGEND	
PROPERTY LINE	—————
CENTER LINE	—————
CORPORATION LINE	—————
DISTRICT LINE	—————
COUNTY LINE	—————
STREAM	~~~~~
EASEMENT	-----
ORIGINAL LOT LINE	-----
DEED LOT NUMBER	(15)
PARCEL OR INDEX NUMBER	(15)
IMPROVEMENT	○
RAILROAD	—+—
DISTRICT NUMBER	(15)
SCALED DIMENSION	5

REVISIONS
 Revisions outgrow this space and are now maintained in a database.

KEY MAP		
23	23	23
23	23A	24
	25	25

COUNTY OF JEFFERSON
 OFFICE OF ASSESSOR
 CHARLES TOWN, W. VA.

**MIDDLEWAY DISTRICT
 DISTRICT 7
 MAP NUMBER 23A**
 DATE, AERIAL PHOTOGRAPHY: 1962
 PHOTO NO: 87,113
 DATE, MAP: APRIL 23, 1963
 SCALE: 1"=200'