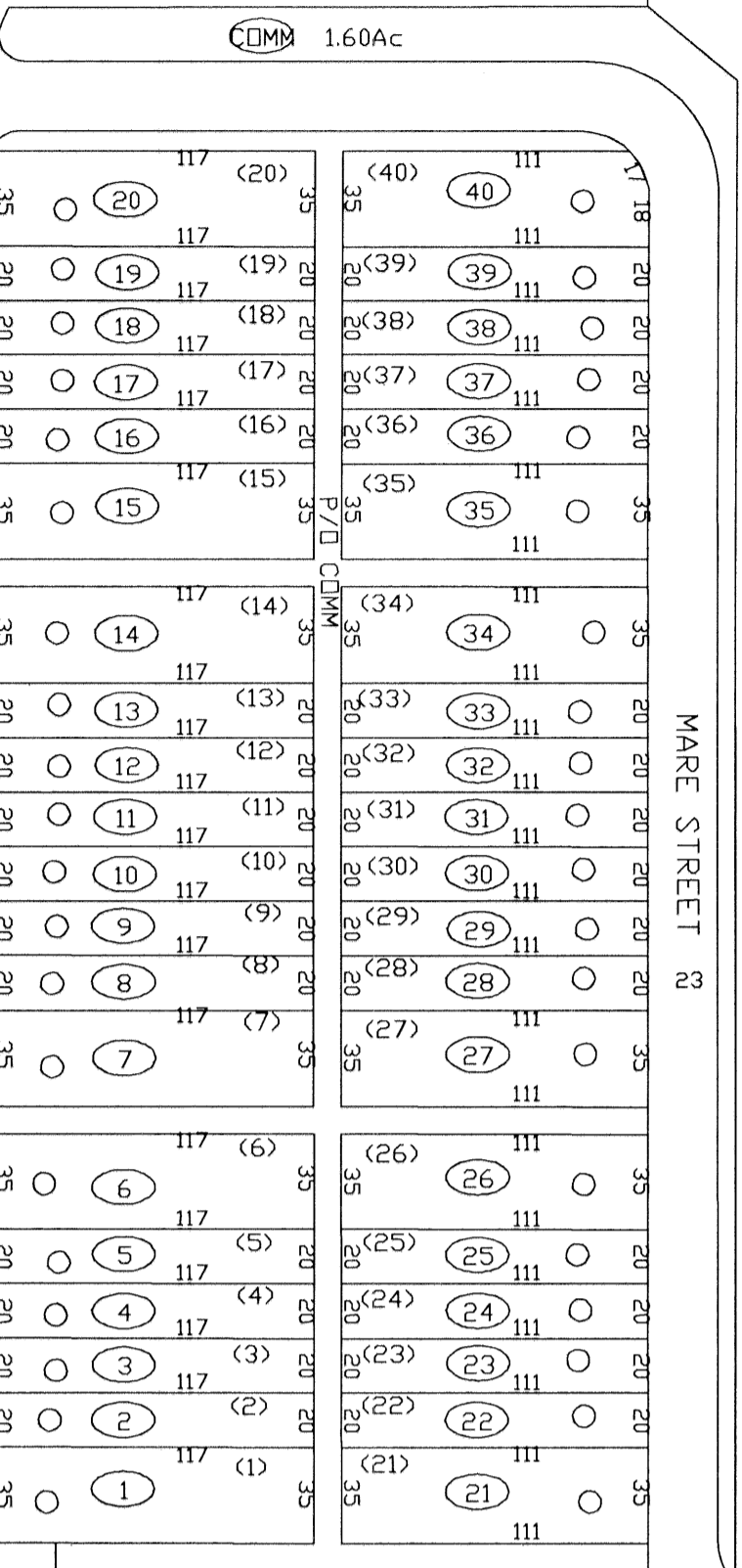
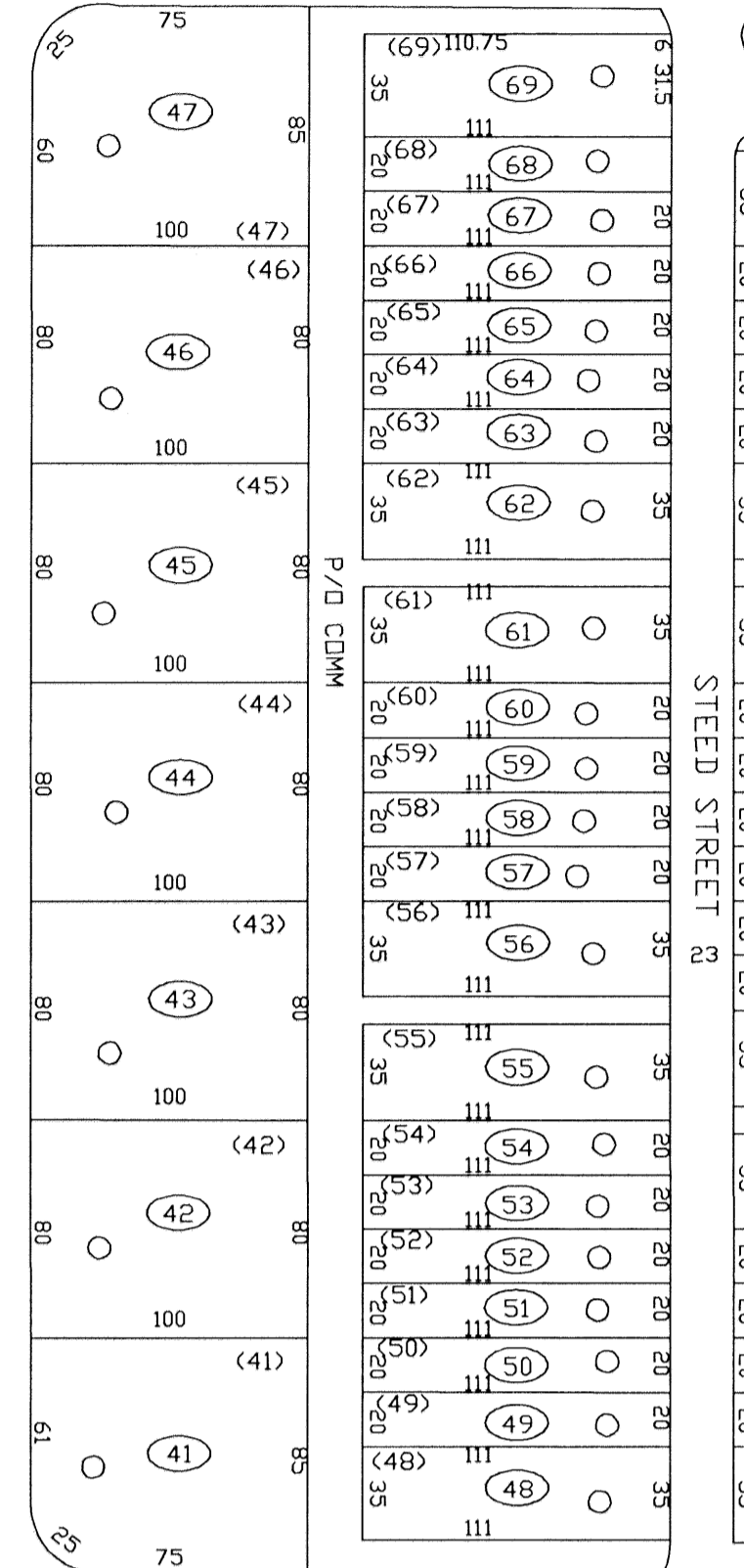
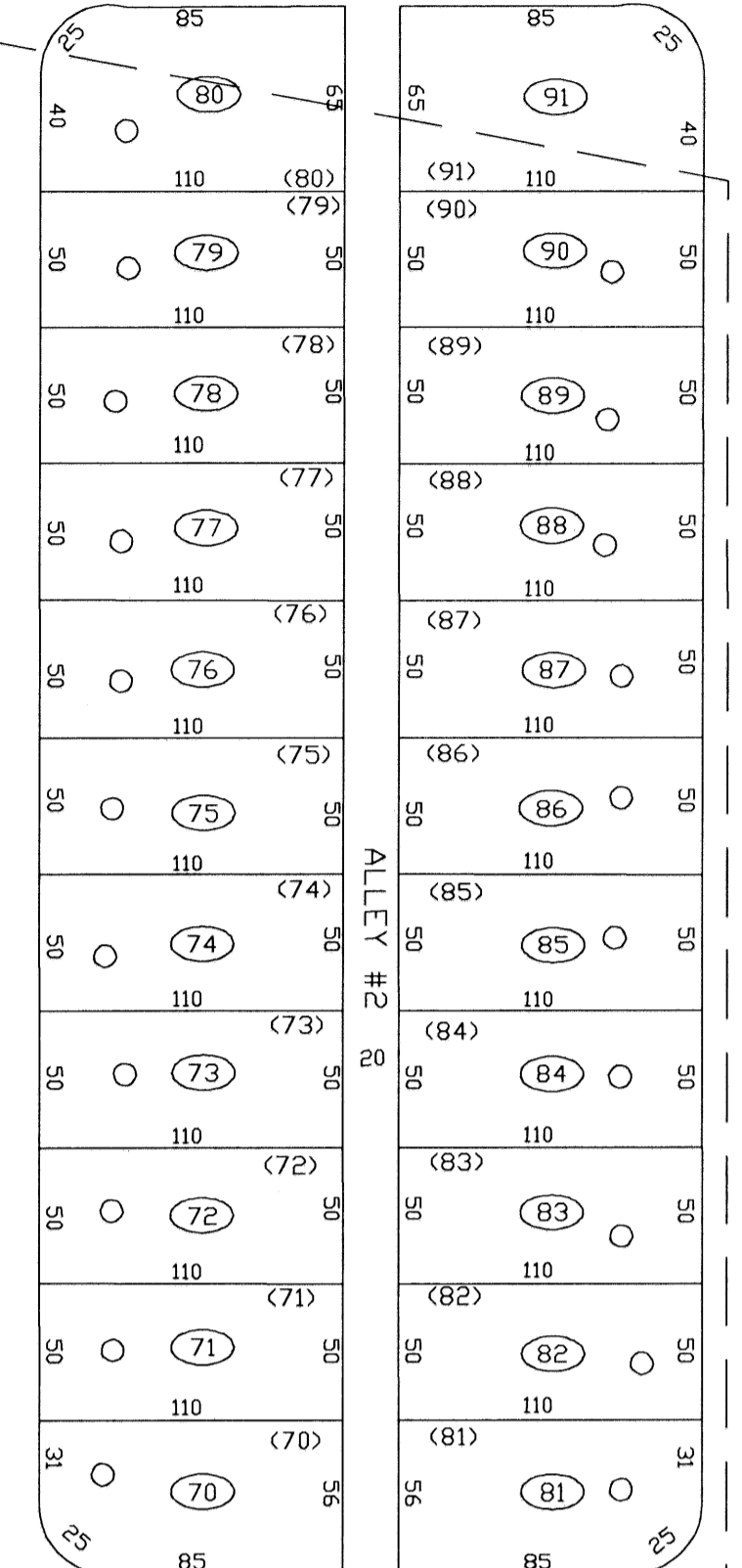
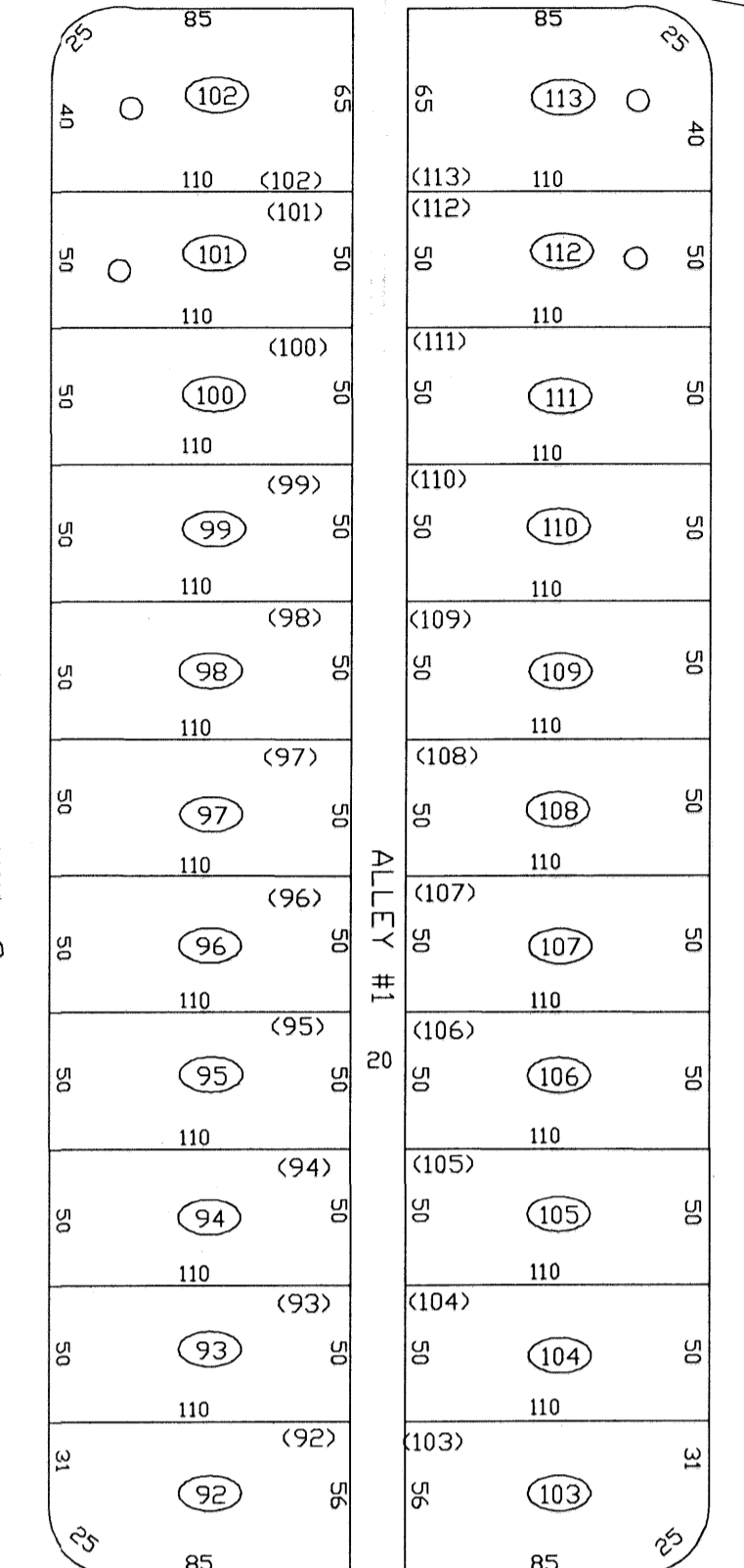
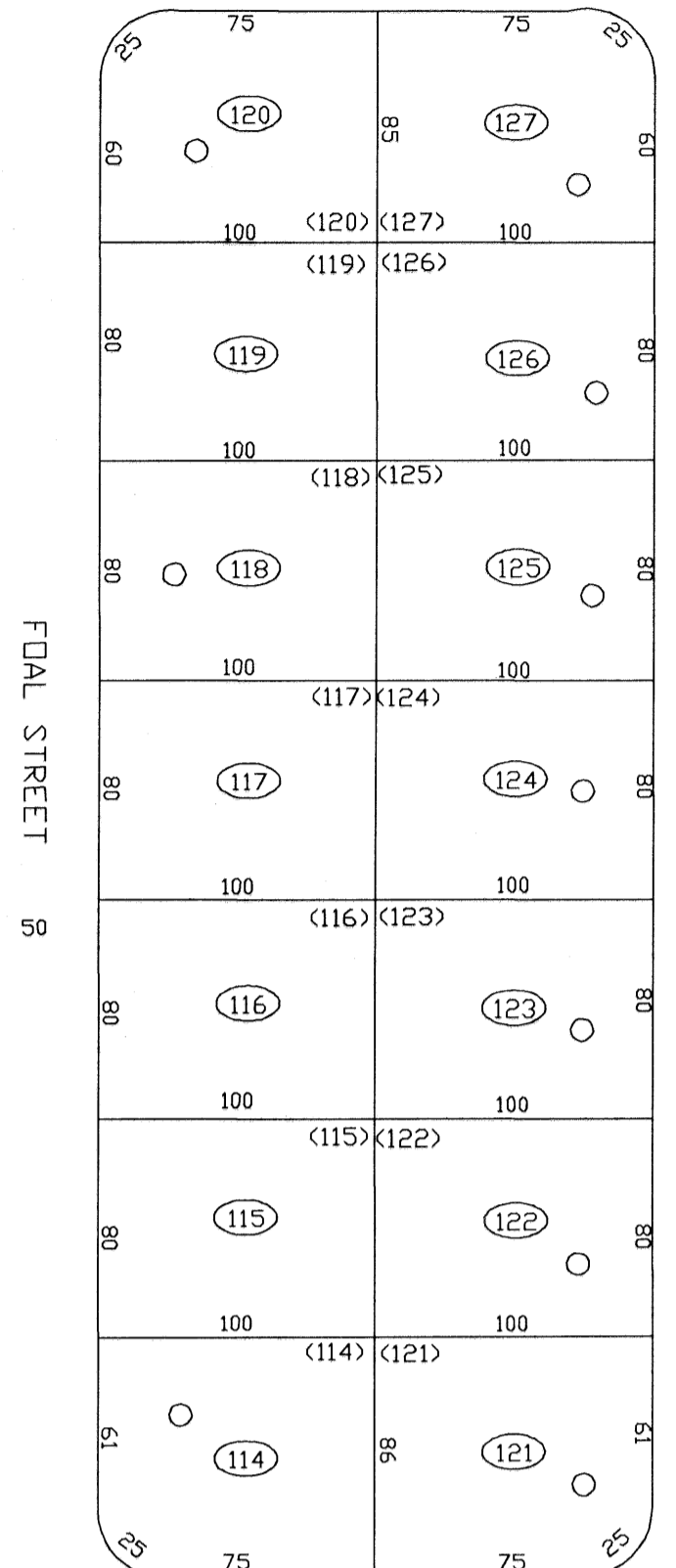


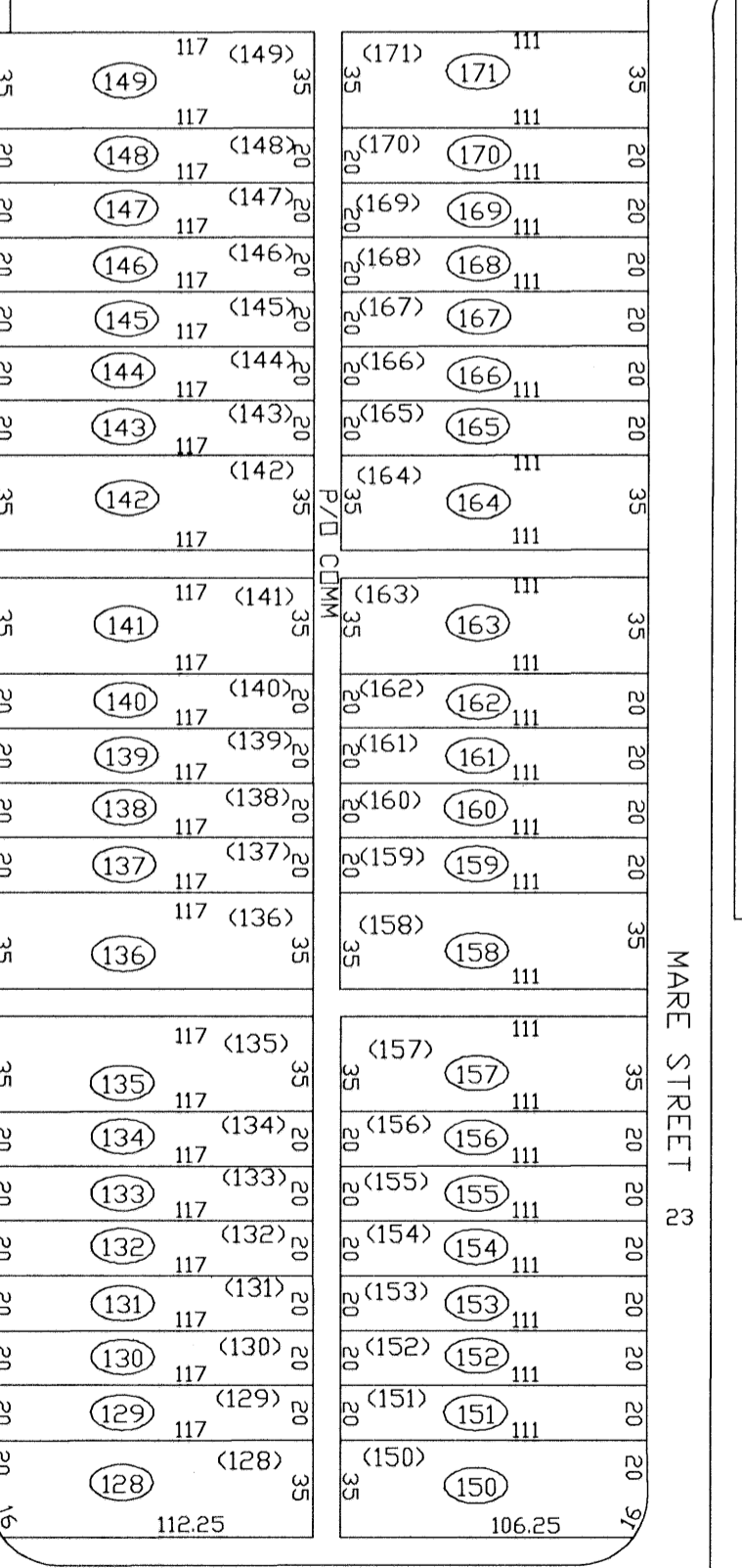
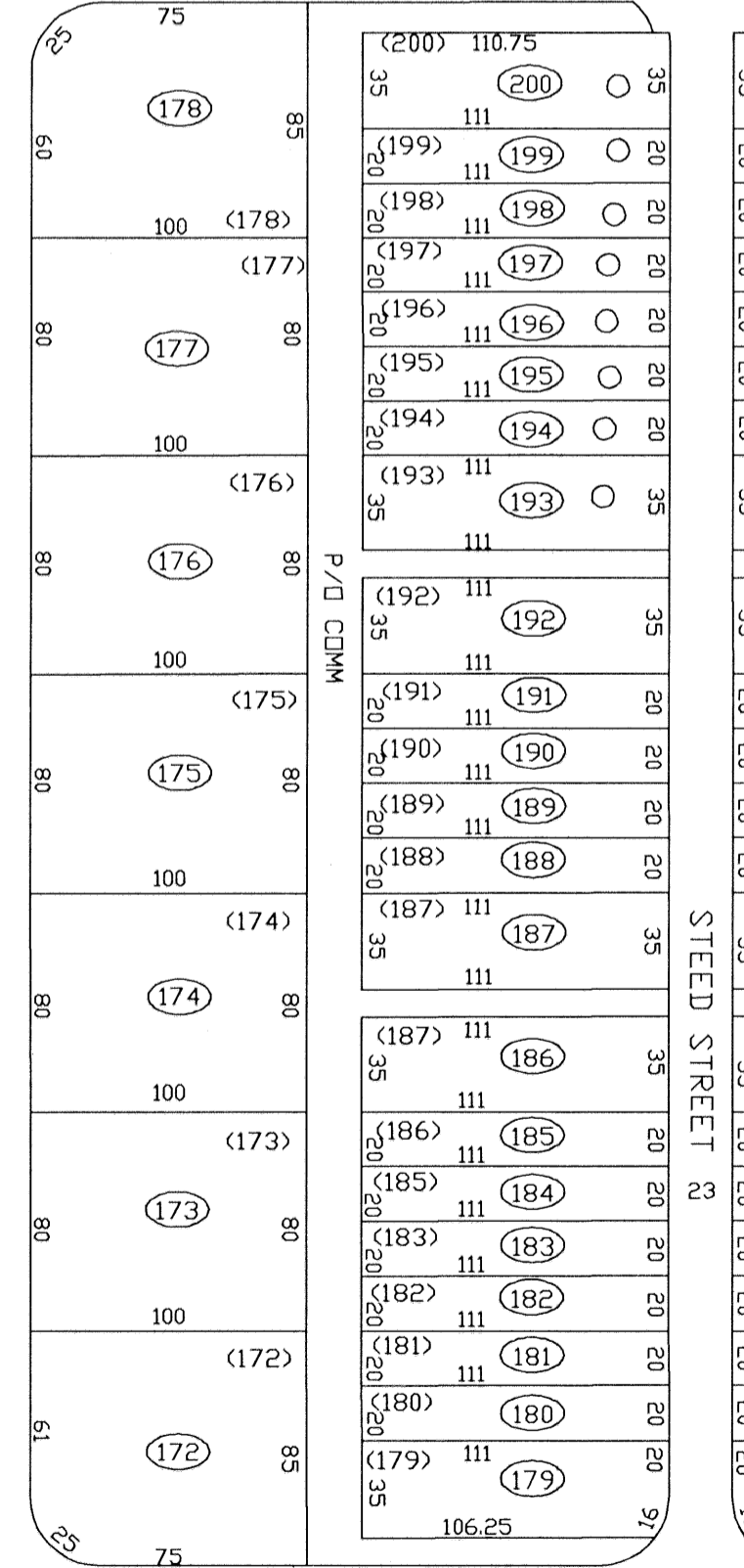
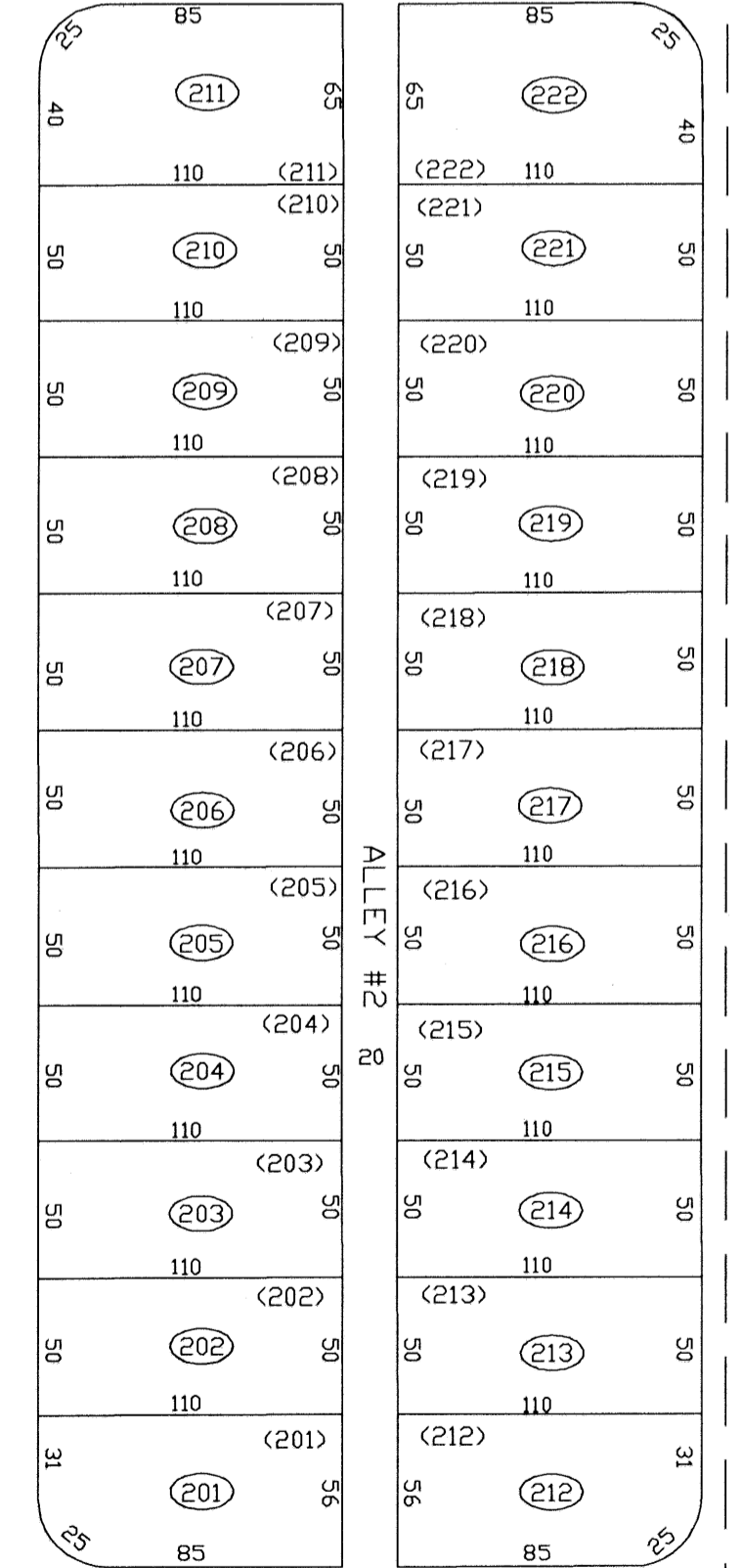
NORTH FAIRFAX BOULEVARD

LAKELAND PLACE AT FAIRFAX CROSSING

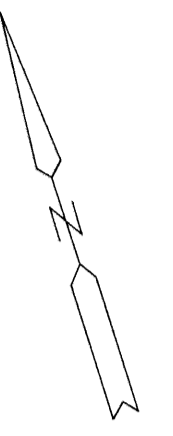
19TH AVENUE



18TH AVENUE



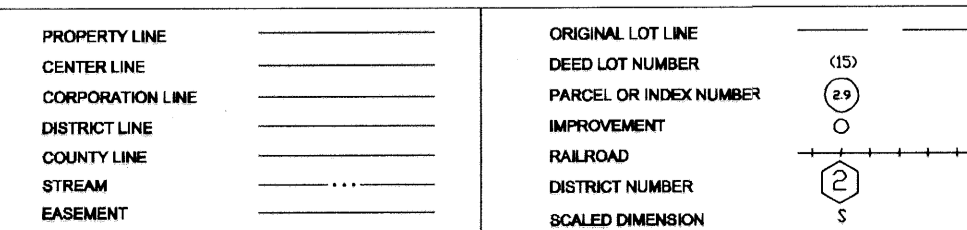
17TH AVENUE



FOR TAX PURPOSES ONLY
PREPARED BY
JEFFERSON COUNTY ASSESSORS OFFICE

Note: Maps are updated constantly by the mapper however, maps are printed only at the beginning of the fiscal year (July)

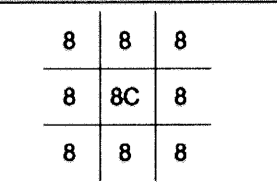
LEGEND



REVISIONS

Revisions outgrew this space and are now maintained in a database.

KEY MAP



COUNTY OF JEFFERSON
OFFICE OF ASSESSOR
CHARLES TOWN, W. VA.

RANSON CORPORATION
DISTRICT 8
MAP NUMBER 8C

DATE, AERIAL PHOTOGRAPHY: 1962
PHOTO NO: 95
DATE, MAP: APRIL 23, 1963
SCALE: 1"=50'