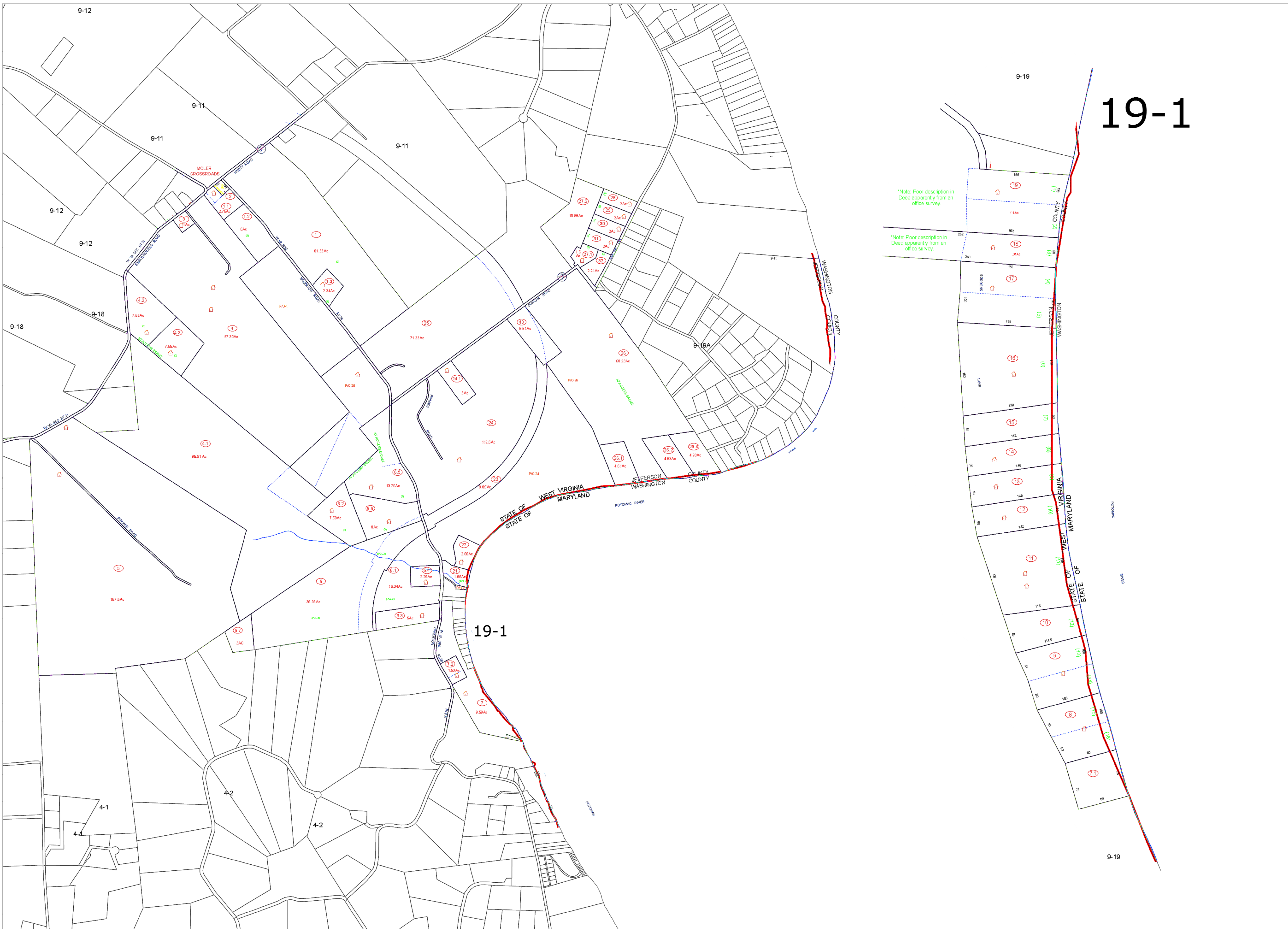
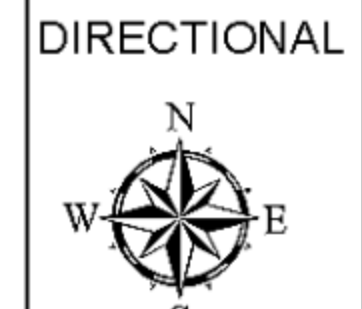


19-1



FOR TAX PURPOSES ONLY
 PREPARED BY
JEFFERSON COUNTY ASSESSOR'S OFFICE
 Note: Maps are updated constantly by the mapper however, maps are only printed at the beginning of the fiscal year.



NOTICE: All tax maps created under the provisions of reappraisal legislation are the property of the State of West Virginia and the Jefferson County Assessor's Office and the reproduction, copying, distribution or sale of such tax maps or any copies thereof, in any format, without written permission is prohibited by law.

LEGEND

PROPERTY LINE	CORPORATION LINE
DISTRICT LINE	COUNTY LINE
STREAM	RAILROAD
IMPROVEMENT	
PP MOBILE HOME	
DISTRICT NUMBER	
SCALED DIMENSION	

DEED LOT NUMBER	(19)
TAX PARCEL NUMBER	(18)
IMPROVEMENT	(17)
PP MOBILE HOME	(16)
DISTRICT NUMBER	(15)
SCALED DIMENSION	(14)

REVISIONS
 REVISIONS OUTGREW THIS SPACE AND ARE NOW MAINTAINED IN A DATABASE

KEY MAP

12	11
18	19
4-1	4-2

COUNTY OF JEFFERSON
OFFICE OF THE ASSESSOR
CHARLES TOWN, WV
ASSESSOR: Angela Banks
MAPPING SPECIALIST: Victoria Myers

SHEPHERDSTOWN DISTRICT
DISTRICT 9
MAP 19
 Date, Aerial Photography: 12/31/1962
 Photo No: 95.37.56
 Date Printed: 8/2/2016
 Date Map Created: 04/23/1963
 Scale 1"=400'