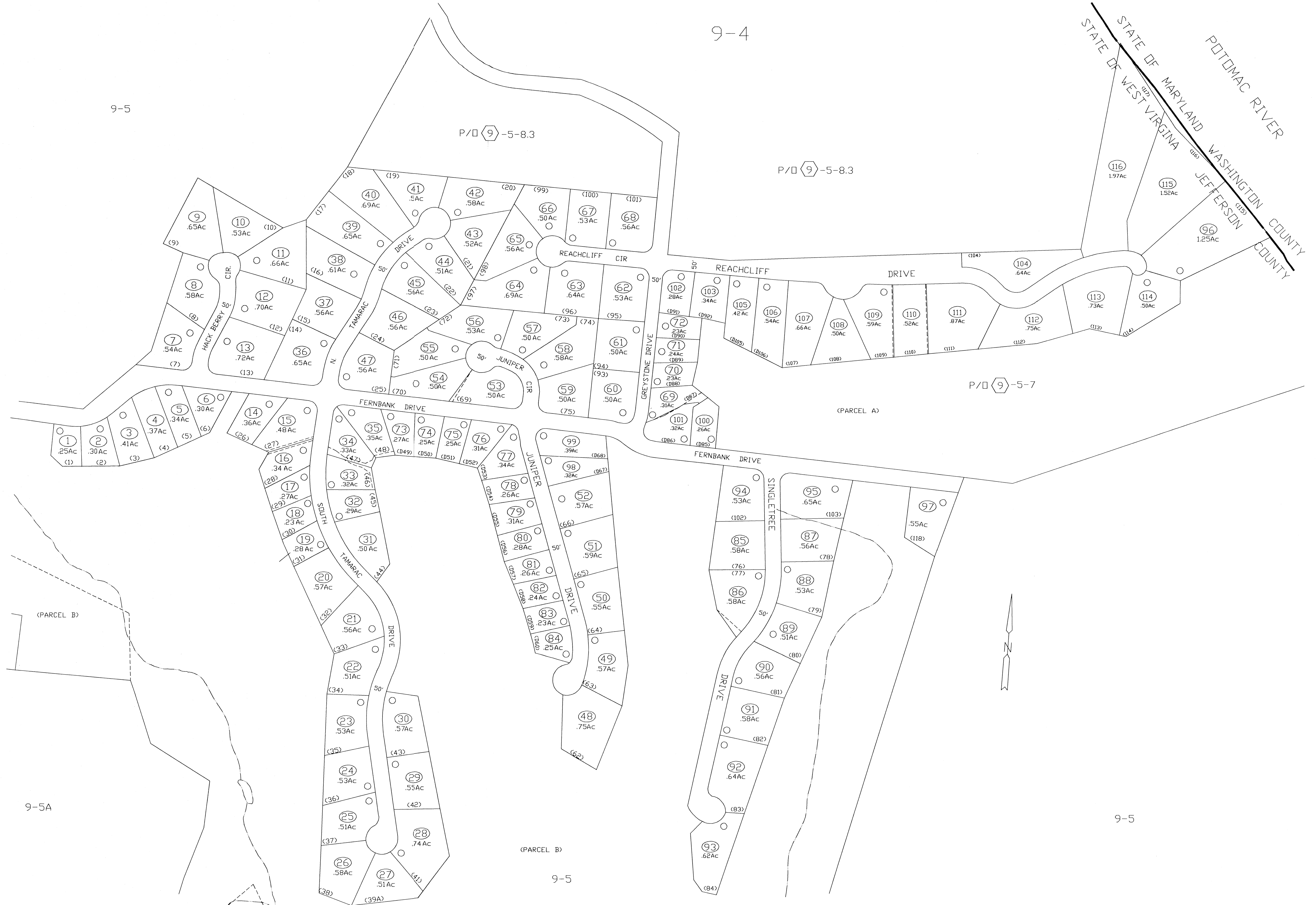


STATE OF WEST VIRGINIA
 STATE OF MARYLAND
 POTOMAC RIVER
 WASHINGTON COUNTY
 JEFFERSON COUNTY



(PARCEL B)

(PARCEL A)

(PARCEL B)

FOR TAX PURPOSES ONLY
 PREPARED BY
JEFFERSON COUNTY ASSESSORS OFFICE
 Note: Maps are updated constantly by the mapper however, maps are printed only at the beginning of the fiscal year (July)

LEGEND	
PROPERTY LINE	ORIGINAL LOT LINE
CENTER LINE	DEED LOT NUMBER
CORPORATION LINE	PARCEL OR INDEX NUMBER
DISTRICT LINE	IMPROVEMENT
COUNTY LINE	RAILROAD
STREAM	DISTRICT NUMBER
EASEMENT	SCALED DIMENSION

REVISIONS
 Revisions outgrew this space and are now maintained in a database.

KEY MAP	
5	4
5	5B
5	5

COUNTY OF JEFFERSON
 OFFICE OF ASSESSOR
 CHARLES TOWN, W. VA.

SHEPHERDSTOWN DISTRICT
DISTRICT 9
MAP NUMBER 5B
 DATE, AERIAL PHOTOGRAPHY: 1982
 PHOTO NO: 87,113
 DATE, MAP: AUGUST, 1990
 SCALE: 1"=100'