

SEE
MAP 3-10-1

SEE
MAP 23-31-4
P/O 320 AC.

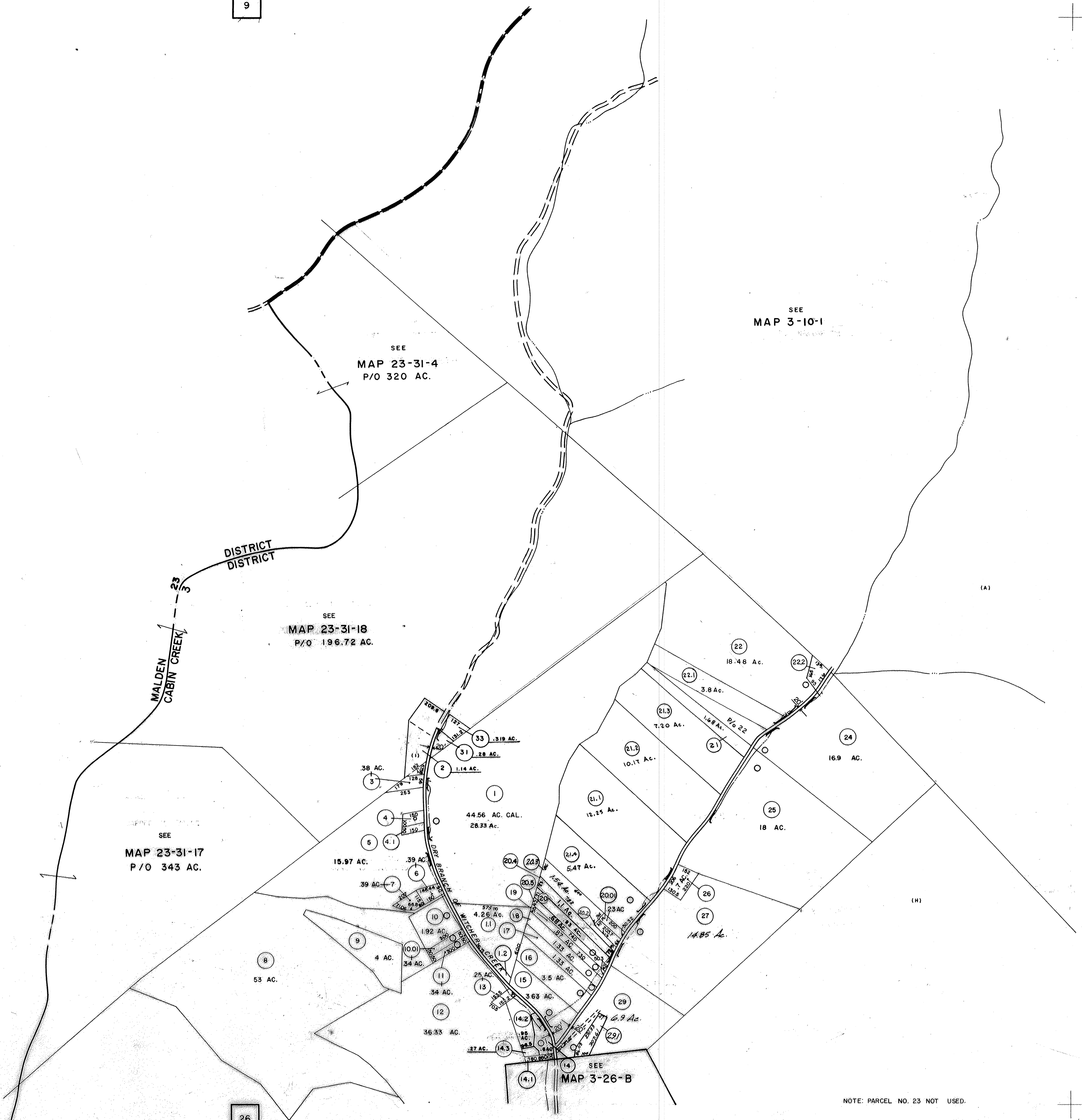
SEE
MAP 23-31-18
P/O 196.72 AC.

SEE
MAP 23-31-17
P/O 343 AC.

SEE
MAP 3-26-B

MALDEN
CABIN CREEK

DISTRICT
DISTRICT



NOTE: PARCEL NO. 23 NOT USED.

DRAFTED BY: *[Signature]* CHECKED BY: *ES*

FOR TAX PURPOSES ONLY

PREPARED BY

AERO SERVICE CORPORATION
A DIVISION OF LITTON INDUSTRIES
210 E. COURTLAND ST., PHILADELPHIA, PA. 19120

AMERICAN AIR SURVEYS, INC.
907 PENN AVENUE, PITTSBURGH 22, PA.
NEW YORK ATLANTA

Legend

Property line	Original lot line	(15)
Right of way line	Deed lot number (in parenthesis)	(16)
Edge of pavement or roadway	Parcel or index number (in circle)	(17)
Corporation line	Improvement	(18)
District line	Railroad	(19)
County line	Scaled Dimension	(20)
Stream	Original block number	(21)
	CALCULATED AREA	(22)

Revisions

1	1-18-74	J.A.B.	1-5-2000	J.A.B.	17
2	12-13-75	J.C.	9-27-2000	J.A.B.	18
3	3-8-78	T.B.	2-14-07	J.A.B.	19
4	Revised to 7-1-85	J.E.B.			20
5	July, 1987	TR.L.			21
6	2-11-97	J.E.B.			22
7	1-1-99	J.E.B.			23
8					24

KANAWHA COUNTY
Office of Assessor
CHARLESTON, WEST VIRGINIA

CABIN CREEK DISTRICT 3
Map No. 24

Photo No.: 409 Scale: 1" = 400'
Date, Photography: April, May, 1964 Date, Map: 5-31-66