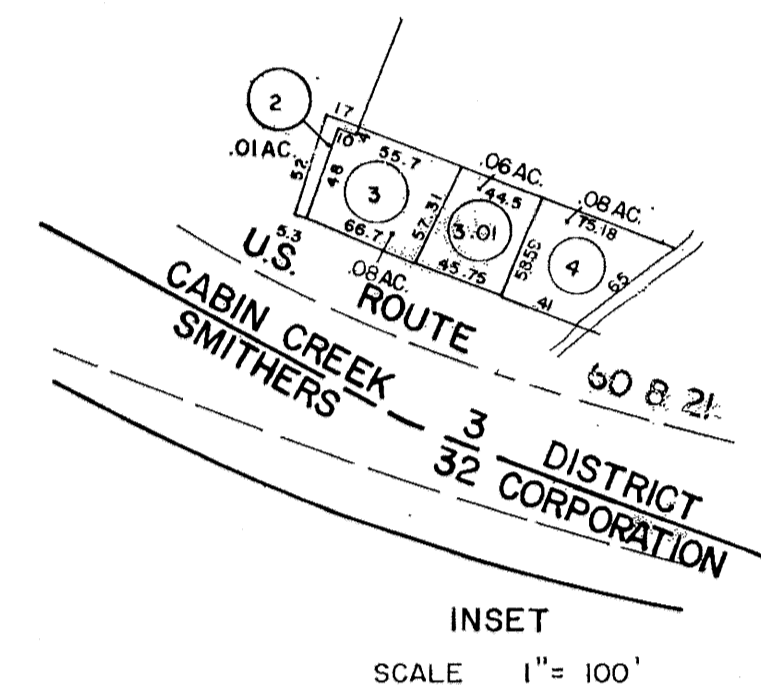


SEE  
MAP 3-46-5  
P/O 161.14 AC.

79.8 AC.

P/O 34-2

34



46

DRAFTED BY: *W.S.* CHECKED BY: *E.S.*

FOR TAX PURPOSES ONLY

PREPARED BY

**AERO SERVICE CORPORATION**  
A DIVISION OF LITTON INDUSTRIES  
218 E. COURTLAND ST. PHILADELPHIA, PA. 19120



**AMERICAN AIR SURVEYS, INC.**  
907 PENN AVENUE, PITTSBURGH 22, PA.  
NEW YORK ATLANTA

**Legend**

Property line	—	Original lot line	—
Right of way line	—	Deed lot number (in parenthesis)	(15)
Edge of pavement or roadway	—	Parcel or index number (in circle)	(10)
Corporation line	—	Improvement	(O)
District line	—	Railroad	S
County line	—	Scaled Dimension	22
Stream	—	Original block number	23
		CALCULATED AREA	CAL.

**Revisions**

1	3-10-78	BAH	9
2	Revised to 7-1-82	JFB	10
3	Revised to 7-1-85	JFB	11
4	REV TO 7-1-87	NCS	12
5	2-1-93	OGIS TRL	13
6	2-11-97	J.E.B.	14
7	1-1-99	JFB	15
8			16
			17
			18
			19
			20
			21
			22
			23
			24

**KANAWHA COUNTY**  
Office of Assessor  
CHARLESTON, WEST VIRGINIA

CABIN CREEK DISTRICT 3  
Map No. 47

Photo No.: 202 Scale: 1"=400'  
Date, Photography: April, May 1964 Date, Map: 5-31-66