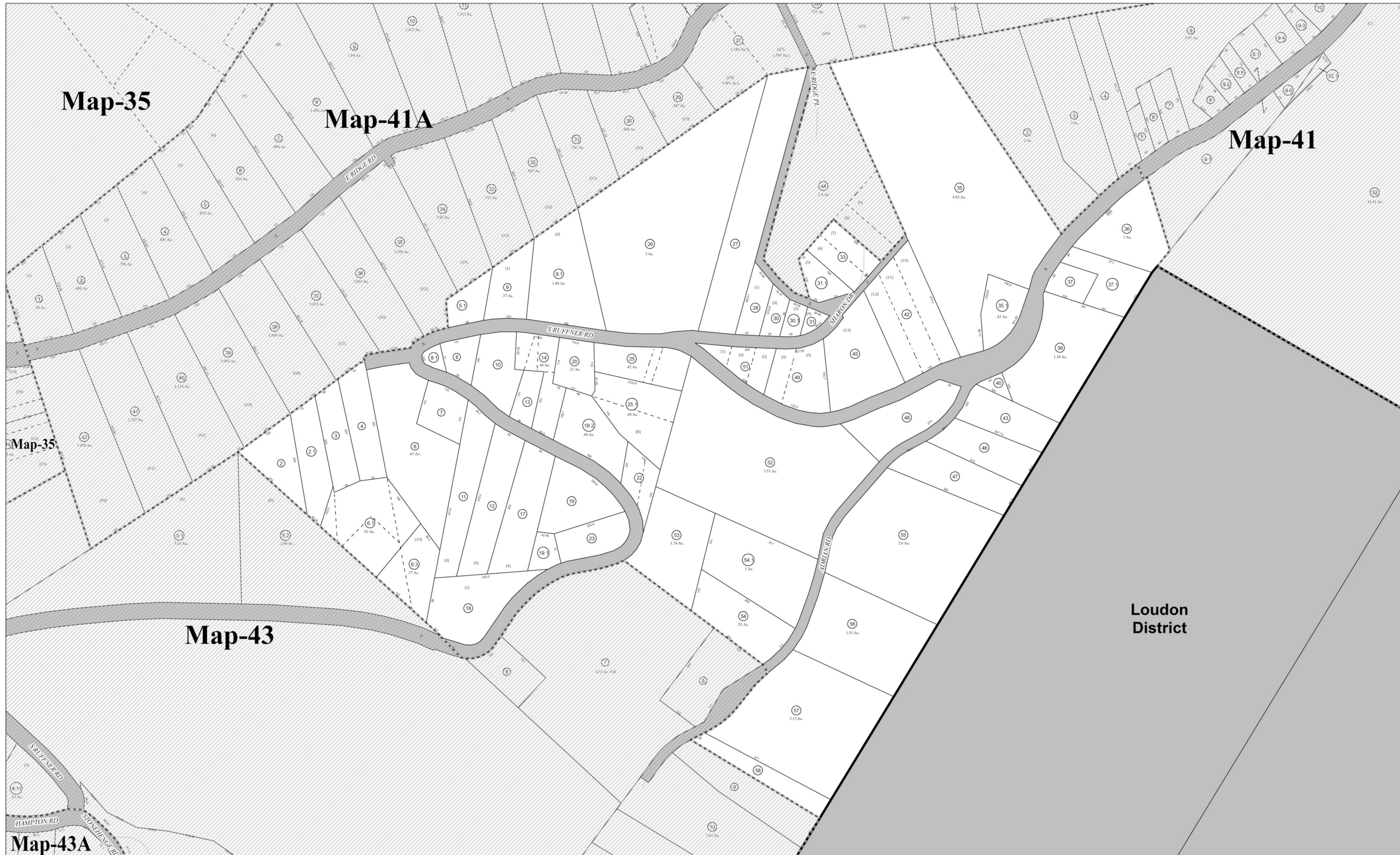


Map-35

Map-41A

Map-41



Map-35

Map-43

Map-43A

Loudon District

FOR TAX PURPOSES ONLY

PREPARED BY

KANAWHA COUNTY ASSESSORS OFFICE

All finished tax maps created by provision of West Virginia law and are the property of the county assessors who created them. The reproduction, copying, distribution, sale or lease of such maps or copies thereof without the written permission of the respective county assessor is prohibited by law

| Legend | |
|----------------------|------------------------|
| Parcel Boundaries | Lot Number (15) |
| Lot Line | Parcel ID Number (125) |
| Leader Line | Block Number (A) |
| District Line | Stream |
| Railroad Center Line | Creek / River |
| Map Boundary | |



KANAWHA COUNTY

Office of the Assessor

CHARLESTON, WEST VIRGINIA

Coordinate System: NAD 1983 2011 StatePlane West Virginia South FIPS 4702 FTUS
 Projection: Lambert Conformal Conic
 Datum: NAD 1983 2011
 False Easting: 1,968,500.0000
 False Northing: 0.0000
 Central Meridian: -81.0000
 Standard Parallel 1: 37.4833
 Standard Parallel 2: 38.8833
 Latitude Of Origin: 37.0000
 Units: Foot US

South Annex (9)

Map No. 42

1 inch = 100 feet

Date Last Revised: 4/16/2018