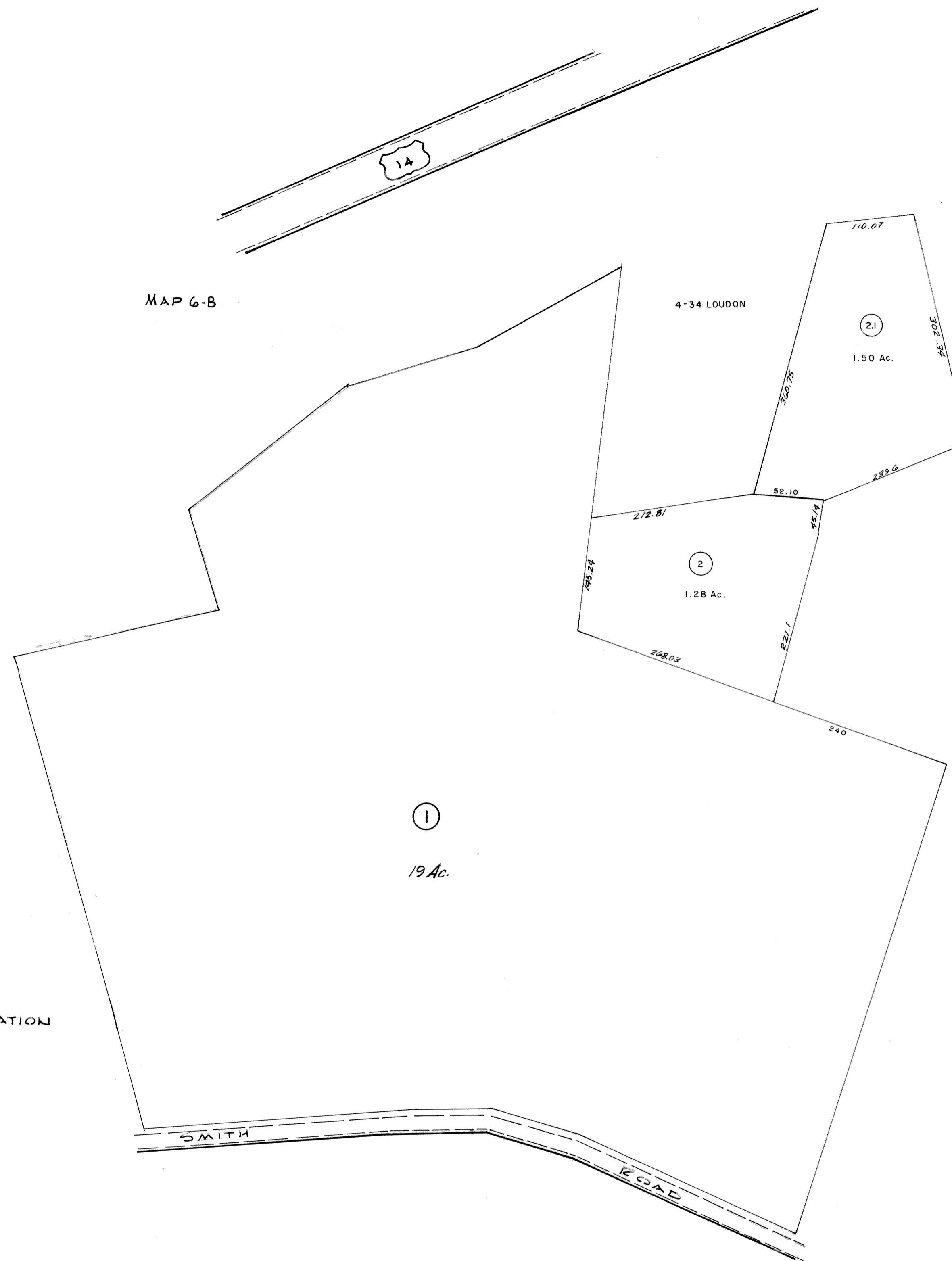


MAP 6-B

MAP 6-B

BOARD OF EDUCATION



Parcel 1 - EXEMPT - Catholic Church
Parcel 2 - EXEMPT - Kan. Pres. Church



For Tax Purposes Only

Prepared by
LOCAL GOVERNMENT RELATIONS DIV.
STATE TAX COMMISSIONER
CHARLESTON, W.VA.

LEGEND

Property line	—	Original lot line	- - - - -
Edge of pavement or roadway	—	Deed lot number	(15)
Corporation line	- - - - -	Parcel or index number	Ⓢ
District line	- - - - -	Improvement	○
County line	- - - - -	Railroad	+

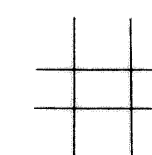
REVISIONS

1	Map No. 51073A Original
2	Revised to 7-1-88
3	Revised to 7-1-88
4	11-1-97 J.E.B.
5	1-9-2001 J.A.B.
6	
7	
8	

RESTRICTION

All tax maps created under the provisions of reappraisal legislation are the property of the State of West Virginia and the reproduction, copying, distribution or sale of such tax maps or any copies thereof without the written permission of the State Tax Commissioner is prohibited by law.

KEY MAP



KANAWHA COUNTY

Office of Assessor
CHARLESTON, WEST VIRGINIA

CHARLESTON SOUTH ANNEX - 9

Map No. 6A

Date, Aerial Photography:
Photo No:

Date, Map: 11/72
Scale: 1" = 100'