

SEE 9 6-6

SEE 9 6-6

SEE 9 6-6

LOUDON DIST. M-4 P-125

LOUDON MAP 4-B

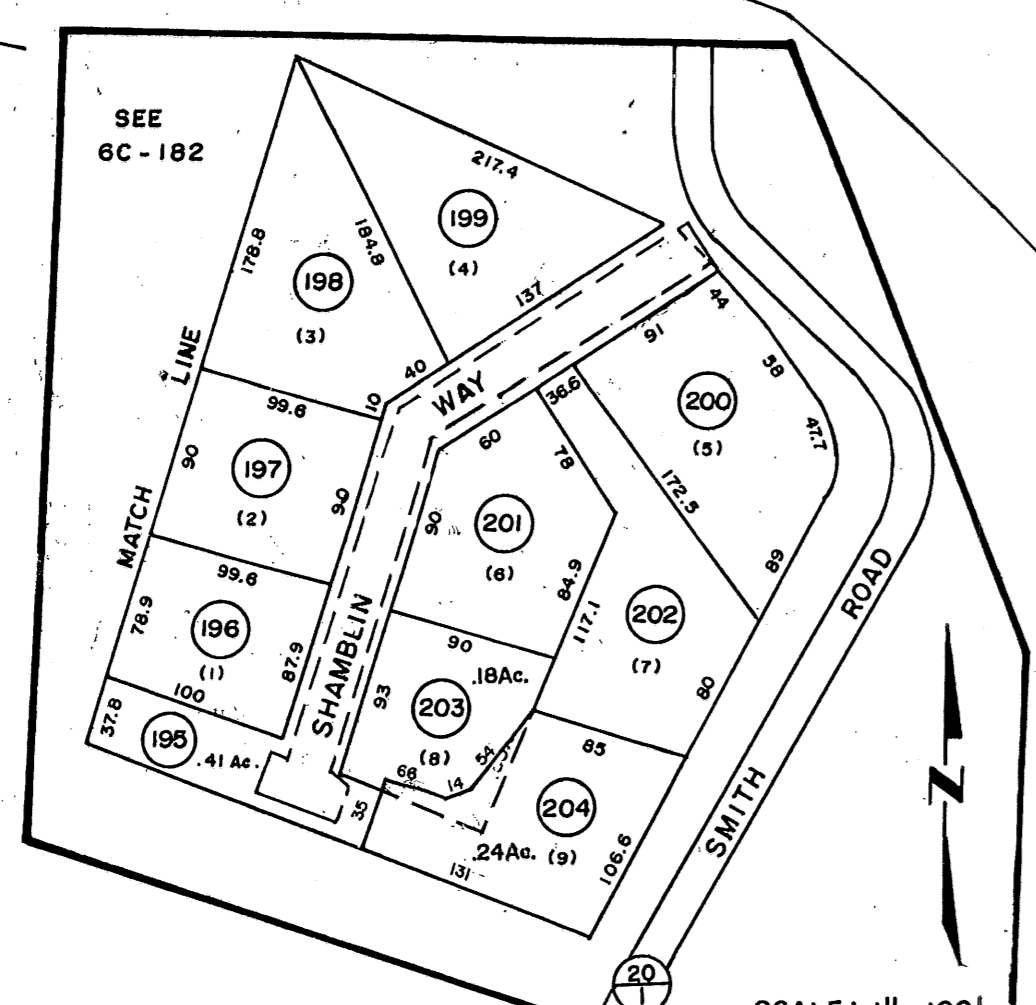
P/O 19-4-127

P/O 173-37.67 Ac.

LOUDON DIST. MAP 4-D

SHERWOOD FOREST

1.08 Ac.



LEGEND		REVISIONS	
Property line	—	1	1/1/81 SLR
Edge of pavement or roadway	—	2	Parcels 1 to 19 Not used.
Corporation line	—	3	7-1-82 T.B.
District line	—	4	7-1-83 L.E. Stepp
County line	—	5	Revised to 7-1-85
		6	Revised to 7-1-87 C.B.G.
		7	Revised to 7-1-89
		8	OGIS 6/25/92 DSH
		9	O.G.I.S 2-15-96 J.E.B.
			11-15-08 J.A.B.

RESTRICTION	KEY MAP
All tax maps created under the provisions of reappraisal legislation are the property of the State of West Virginia and the reproduction, copying, distribution or sale of such tax maps or any copies thereof without the written permission of the State Tax Commissioner is prohibited by law.	6C

KANAWHA COUNTY

STATE OF WEST VIRGINIA

CHARLESTON SOUTH ANNEX-9
Map No. 6C

Date, Aerial Photography: _____
Photo No: _____
Date, Map: _____
Scale: 1" = 100'

For Tax Purposes Only

Prepared by
LOCAL GOVERNMENT RELATIONS DIV.
STATE TAX COMMISSIONER
CHARLESTON, W.VA.