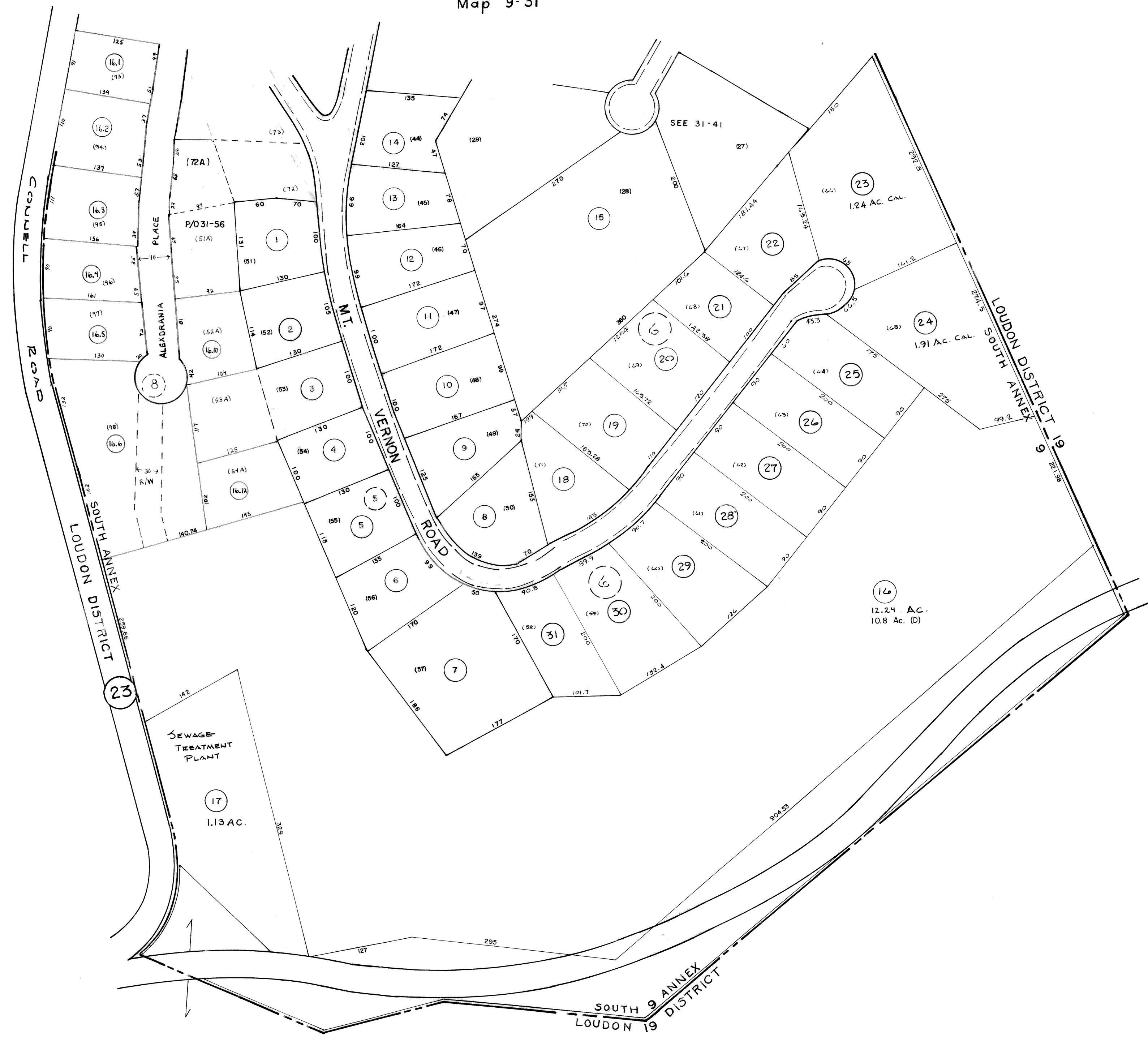


Map 9-31



See Map 8 Loudon District

MONTCLAIR ADN.  
SEC. 5-6

For Tax Purposes Only

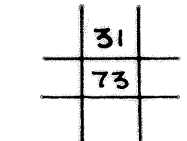
Prepared by  
ASSESSMENT EQUALIZATION DIV.  
STATE TAX COMMISSIONER  
CHARLESTON, W.VA.

Property line \_\_\_\_\_  
 Edge of pavement or roadway \_\_\_\_\_  
 Corporation line \_\_\_\_\_  
 District line \_\_\_\_\_  
 County line \_\_\_\_\_

Original lot line - - - - -  
 Deed lot number (15)  
 Parcel or index number (9)  
 Improvement o  
 Railroad ————

Revisions			
1	9-26-72	N.L.	9
2	DAVIS 7/17/74	TJM	10
3	5-26-76	D.S.	11
4	8-5-77	WHP	12
5	2/16/79	SLR	13
6	Revised 6-7-82	SLR	14
7	7/1/85	R.L.B.	15
8			16
9	OGIS 6/28/92	DSH	17
10	OGIS 5-93	RD	18
11	11-1-97	J.E.B.	19
12	1-11-2001	J.A.B.	20
13			21
14			22
15			23
16			24

KEY MAP



KANAWHA COUNTY

Office of Assessor  
CHARLESTON, WEST VIRGINIA

SOUTH ANNEX

MAP NO. 73

Date, Aerial Photography:  
Photo No:

Date, Map: 5-69  
Scale: 1" = 100'