

P/O 57-3
37 Ac.

P/O
58 - 5.3

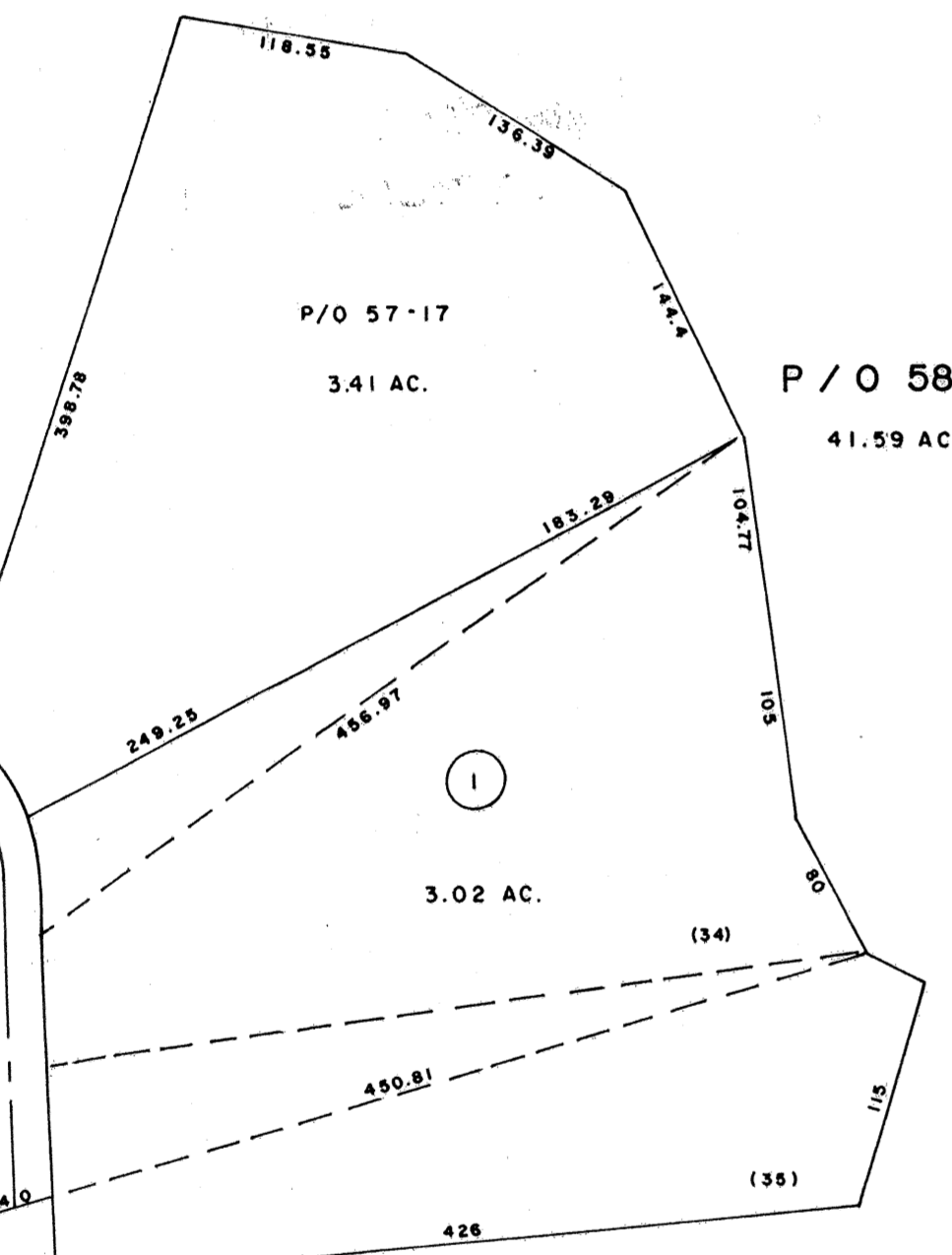
57

BRIARWOOD ESTATES

P/O 57-17
3.41 AC.

P/O 58-5
41.59 AC.

3.02 AC.



SEE 94 - 71

SEC. XIV
INSET NO. 1
MAP 49

SEE WOODBRIDGE
MAP 76A

SEE 65 - 110

SEE 65 - 19

SEE 65 - 23.2

SEE MAP 66A PARCEL 9

SEE MAP 94
SECTION XIV

SEE SHEET 76

FOR TAX PURPOSES ONLY

PREPARED BY

AERO SERVICE CORPORATION
A DIVISION OF LYTON INDUSTRIES
210 E. COURTLAND ST., PHILADELPHIA, PA. 19120

AMERICAN AIR SURVEYS, INC.
907 PENN AVENUE, PITTSBURGH 22, PA.
NEW YORK ATLANTA

Legend

Property Line	Original lot line	(12)
Right of way line	Deed lot number (in parenthesis)	(10)
Edge of pavement or roadway	Parcel or index number (in circle)	(99)
Corporation line	Improvement	(0)
District line	Railroad	(S)
County line	Scaled Dimension	(22)
Stream	Original block number	(22)

Revisions

1	8-21-74	DAVIS	DS	9	1-1-99	J.E.B.	17
2	6-7-76	T.G.	T.G.	10	1-27-2000	J.A.B.	18
3	2-6-79	Derr		11	5-14-08	J.A.B.	19
4	Revised to 7-1-82			12			20
5	Revised to 7-1-85			13			21
6	Revised to 7-1-87			14			22
7	OGIS	3/26/92	DSH	15			23
8	12-1-97	J.E.B.		16			24

KANAWHA COUNTY

Office of Assessor

CHARLESTON, WEST VIRGINIA

CITY OF CHARLESTON
NORTH CHARLESTON
Map No. 66

Photo No. 21-80,81 Scale: 1" = 100'

Date, Photography: April, May, 1964 Date, Map: 2-7-66