

P/O 10-1  
224.87 Ac.  
ASSESSED IN NORTH ANNEX

P/O 10-1  
175.52 AC.

DISTRICT

UNION

2  
85 Ac.

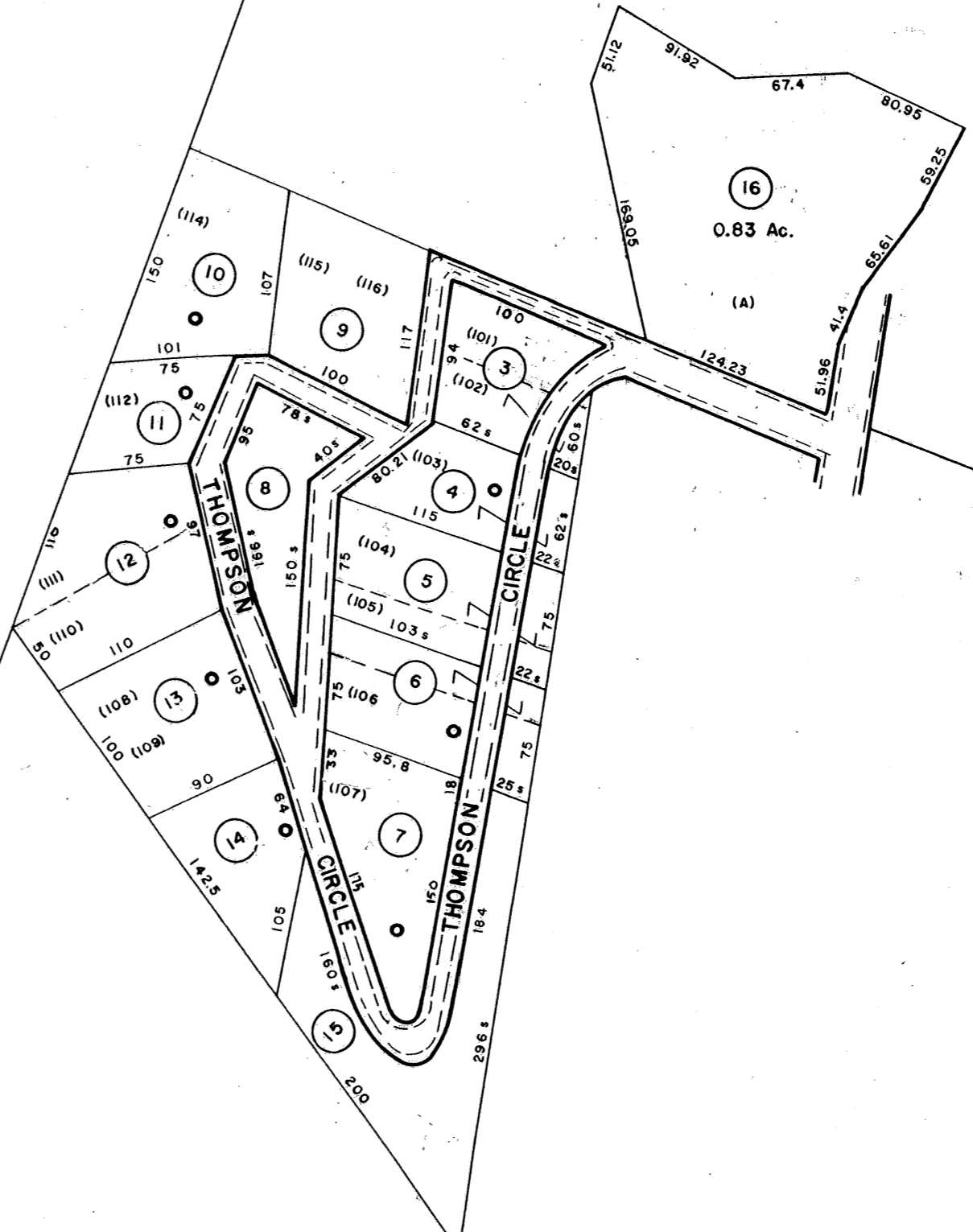
12  
0.58 AC.

1  
4.66 AC.

1.1  
.58 Ac

16  
0.83 Ac.

WOODWARD DRIVE



FOR TAX PURPOSES ONLY

PREPARED BY

**AERO SERVICE CORPORATION**  
A DIVISION OF LITTON INDUSTRIES  
210 E. COURTLAND ST., PHILADELPHIA, PA. 19120

**AMERICAN AIR SURVEYS, INC.**  
907 PENN AVENUE, PITTSBURGH 22, PA.  
NEW YORK ATLANTA

**Legend**

Property line	Original lot line
Right of way line	Deed lot number (in parenthesis)
Edge of pavement or roadway	Parcel or index number (in circle)
Corporation line	Improvement
District line	Railroad
County line	Scaled Dimension
Stream	Original block number

**Revisions**

1	6/19/76	J.C.	9
2	Revised to 7-1-82	J.C.	10
3	Rev. to 7-1-89	R.E.B.	11
4	O.G.I.S. 2-15-96	J.E.B.	12
5	12-1-97	J.E.B.	13
6	4-28-08	J.A.B.	14
7			15
8			16

**KANAWHA COUNTY**  
Office of Assessor  
CHARLESTON, WEST VIRGINIA

**CITY OF CHARLESTON**  
NORTH CHARLESTON  
Map No. 7

Photo No. 15-149,150  
Date, Photography: April, May, 1964

Scale: 1" = 100'  
Date, Map: 2-7-66