

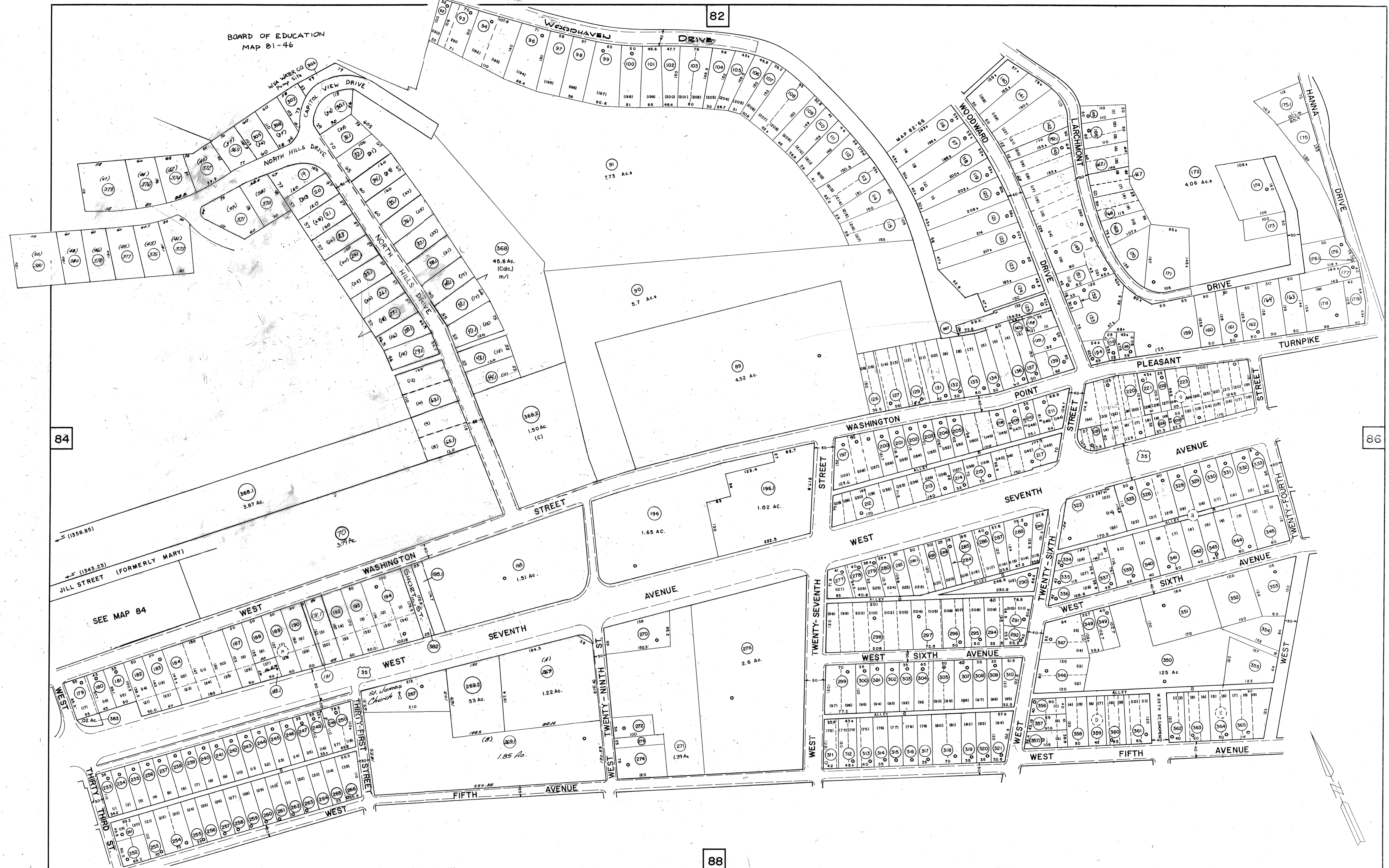
BOARD OF EDUCATION  
MAP 81-46

82

84

86

88



FOR TAX PURPOSES ONLY

PREPARED BY

**AERO SERVICE CORPORATION**  
A DIVISION OF LITTON INDUSTRIES  
210 E. COURTLAND ST., PHILADELPHIA, PA. 19120

**AMERICAN AIR SURVEYS, INC.**  
907 PENN AVENUE, PITTSBURGH 22, PA.  
NEW YORK ATLANTA

**Legend**

|                             |                                    |
|-----------------------------|------------------------------------|
| Property Line               | Original lot line                  |
| Right of way line           | Dead lot number (in parenthesis)   |
| Edge of pavement or roadway | Parcel or index number (in circle) |
| Corporation line            | Improvement                        |
| District line               | Railroad                           |
| County line                 | Scaled Dimension                   |
| Stream                      | Original block number              |

**Revisions**

|   |                   |    |                 |        |    |
|---|-------------------|----|-----------------|--------|----|
| 1 | Davis 8/1/74 T.M. | 9  | REV. TO 7-1-89  | NCS    | 17 |
| 2 | 6/8/76 T.L.       | 10 | O.G.I.S 2-15-96 | J.E.B. | 18 |
| 3 | 2-7-79 Derr       | 11 | 12-1-97         | J.E.B. | 19 |
| 4 |                   | 12 | 1-1-99          | J.E.B. | 20 |
| 5 | Revised to 7-1-82 | 13 | 1-28-2000       | J.A.B. | 21 |
| 6 | Revised to 7-1-85 | 14 | 5-15-08         | J.A.B. | 22 |
| 7 | REV. TO 7-1-87    | 15 |                 |        | 23 |
| 8 | OGIS 3/29/92      | 16 |                 |        | 24 |

**KANAWHA COUNTY**  
Office of Assessor  
CHARLESTON, WEST VIRGINIA

**CITY OF CHARLESTON**  
NORTH CHARLESTON  
Map No. 85

18-152-153  
Photo No. 22-170-171  
Date, Photography: April, May, 1964  
Scale: 1"=100'  
Date, Map: 9-18-65