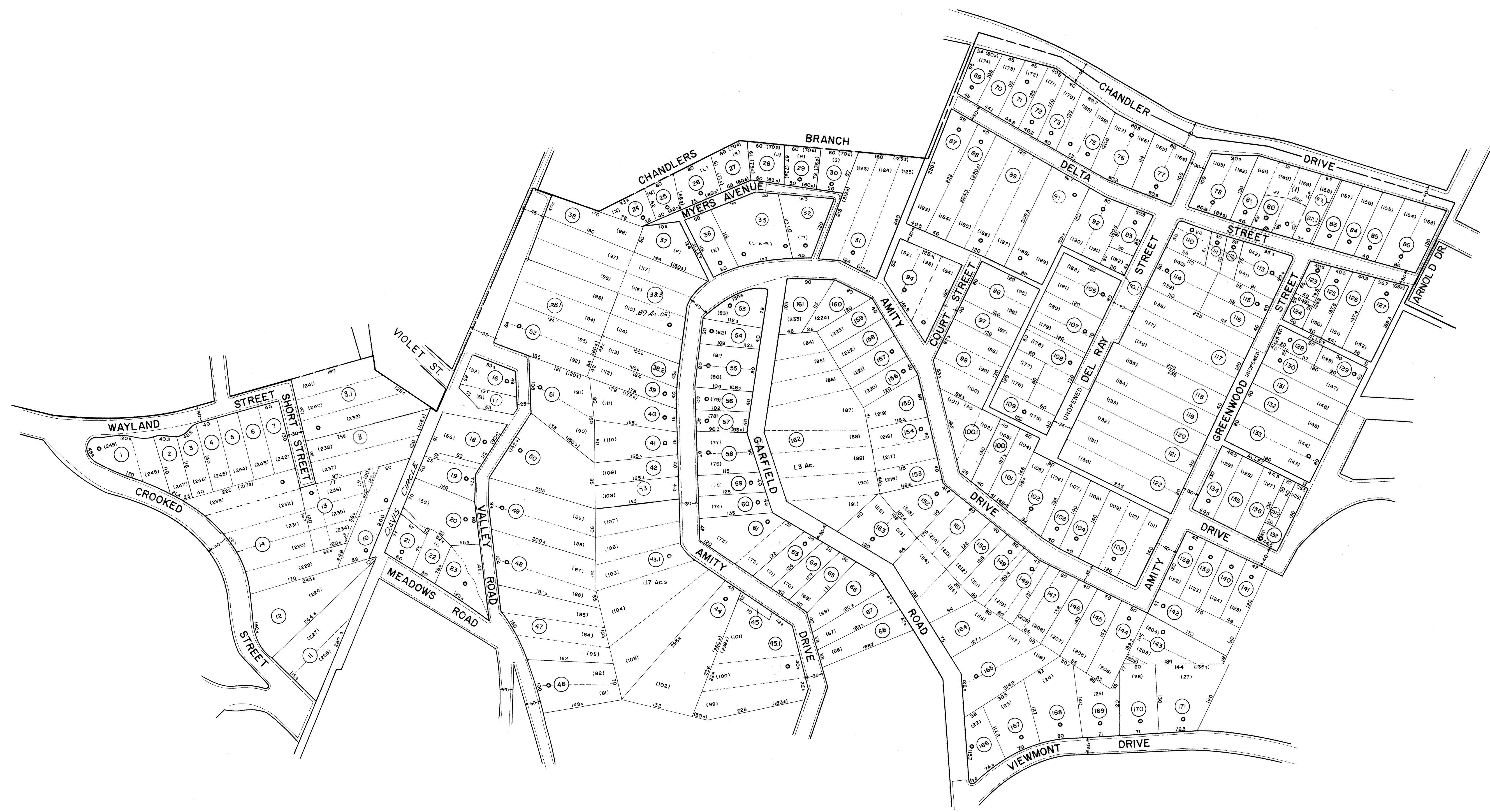


3

2



4

FOR TAX PURPOSES ONLY

PREPARED BY

**AERO SERVICE CORPORATION**  
 A DIVISION OF LITTON INDUSTRIES  
 210 E. COURTLAND ST., PHILADELPHIA, PA. 19120

**AMERICAN AIR SURVEYS, INC.**  
 907 PENN AVENUE, PITTSBURGH 22, PA.  
 NEW YORK ATLANTA

**Legend**

Property line	—	Original lot line	—
Right of way line	—	Deed lot number (in parenthesis)	(15)
Edge of pavement or roadway	—	Parcel or index number (in circle)	(99)
Corporation line	—	Improvement	0
District line	—	Railroad	—
County line	—	Scaled Dimension	S
Stream	—	Original block number	(22)

**Revisions**

No.	Date	By	Description
1	7-24-72	J.M.	
2	11-25-74	R.S.	
3	2-23-74	J.C.	
4	1/15/74	SLR	
5	Revised to 7-1-82	J.F.	
6	Revised to 7-1-82	J.F.	
7	July, 1987	TRL	
8	O.G.I.S. 2-15-96	J.E.B.	
9	1-1-98	J.E.B.	
10	1-1-99	J.E.B.	
11	1-28-2001	J.A.B.	
12			
13			
14			
15			
16			
17			
18			
19			
20			
21			
22			
23			
24			

**KANAWHA COUNTY**

Office of Assessor  
CHARLESTON, WEST VIRGINIA

**CITY OF CHARLESTON**  
WEST CHARLESTON  
Map No. 1

Photo No.: 19-138, 139  
20-106, 107, 108  
Date, Photography: April, May, 1964  
Scale: 1"=100'  
Date, Map: 10-21-65