

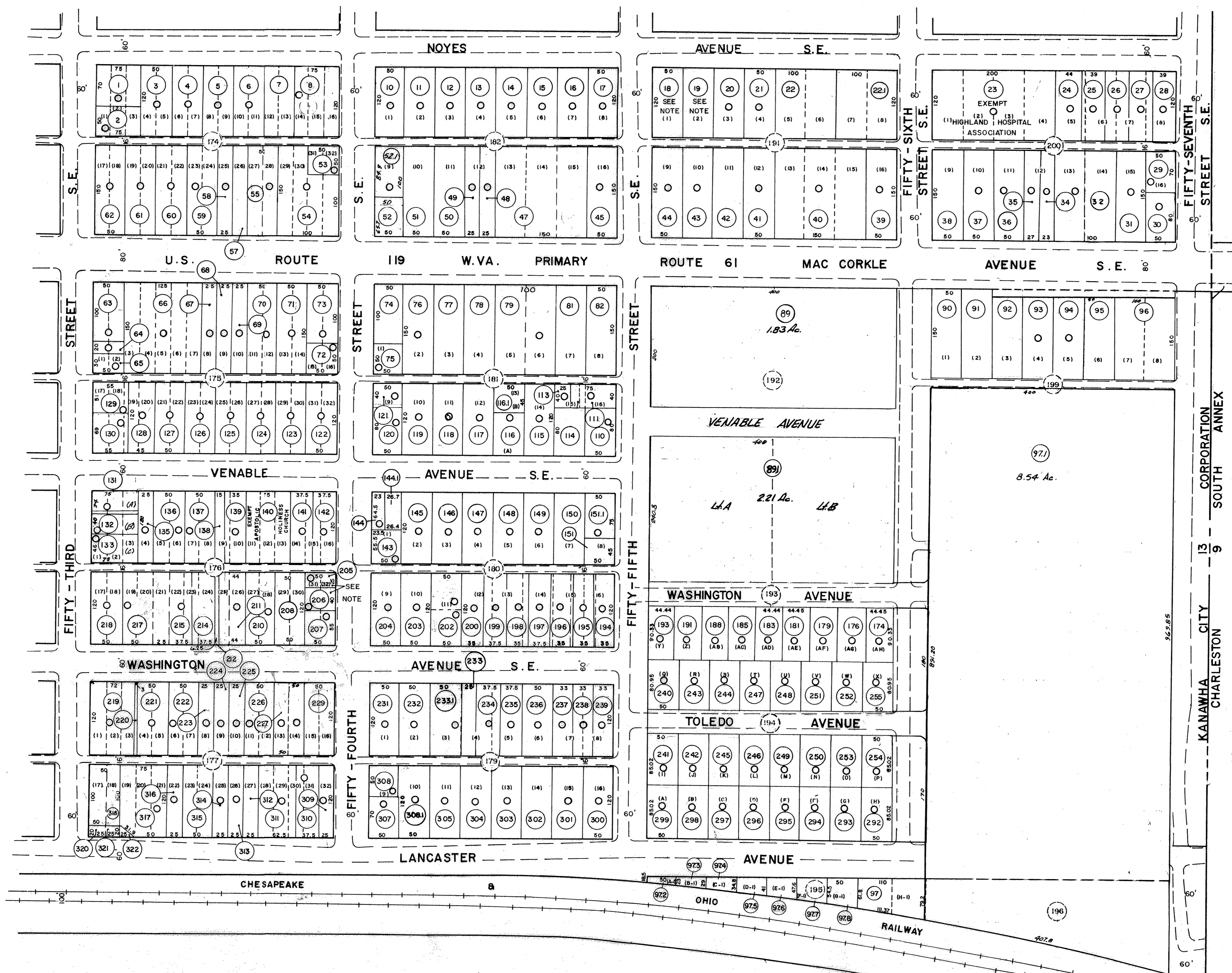
13 - 8

13 - 9

13 - 12

13 - 11

13 - 26



DRAFTED BY: *R.T.*
 CHECKED BY: *M.M.*

FOR TAX PURPOSES ONLY

PREPARED BY

AERO SERVICE CORPORATION
 A DIVISION OF LITTON INDUSTRIES
 210 E. COURTLAND ST. PHILADELPHIA, PA. 19120

AMERICAN AIR SURVEYS, INC.
 907 PENN AVENUE, PITTSBURGH 22, PA.
 NEW YORK ATLANTA

Legend

Property line	—	Original lot line	—
Right of way line	—	Deed lot number (in parenthesis)	(15)
Edge of pavement or roadway	—	Parcel or index number (in circle)	⊙
Corporation line	—	Improvement	○
District line	—	Railroad	—
County line	—	Scaled Dimension	S
Stream	—	Original block number	②
		CALCULATED AREA	CAL.

Revisions

1	SOURCE 6/11/78 T.C.M.	9	O.G.I.S. 4-1-96 J.E.B.	17
2	6/14/76 T.C.	10	1-1-98 J.E.B.	18
3	1-8-79 DG	11	1-29-2001 J.A.B.	19
4	Revised to 7-1-82 DP	12	7-23-08 J.A.B.	20
5	7-1-83 L.E.S.	13		21
6	Revised to 7-1-85 DP	14		22
7	July, 1987 TRL	15		23
8	Revised to 7-1-89 DP	16		24

KANAWHA COUNTY
 Office of Assessor
 CHARLESTON, WEST VIRGINIA

NOTE:
 LOT NOS. 18 & 19
 EXEMPT - WESTMINSTER
 PRESBYTERIAN CHURCH
 LOT NO. 205-EXEMPT
 APOSTOLIC HOLINESS
 CHURCH
 LOT NO. 206-EXEMPT
 KANAWHA CITY
 HOLINESS CHURCH

NOTE:
 PARCEL NOS. 42, 230, 319 NOT USED
 PARCEL NOS. 140-EXEMPT APOSTOLIC
 HOLINESS CHURCH

KANAWHA CITY CORPORATION - 13

Map No. 10

Photo No.: 1097 Scale: 1" = 100'
 Date, Photography: April, May 1964 Date, Map: 3-26-64