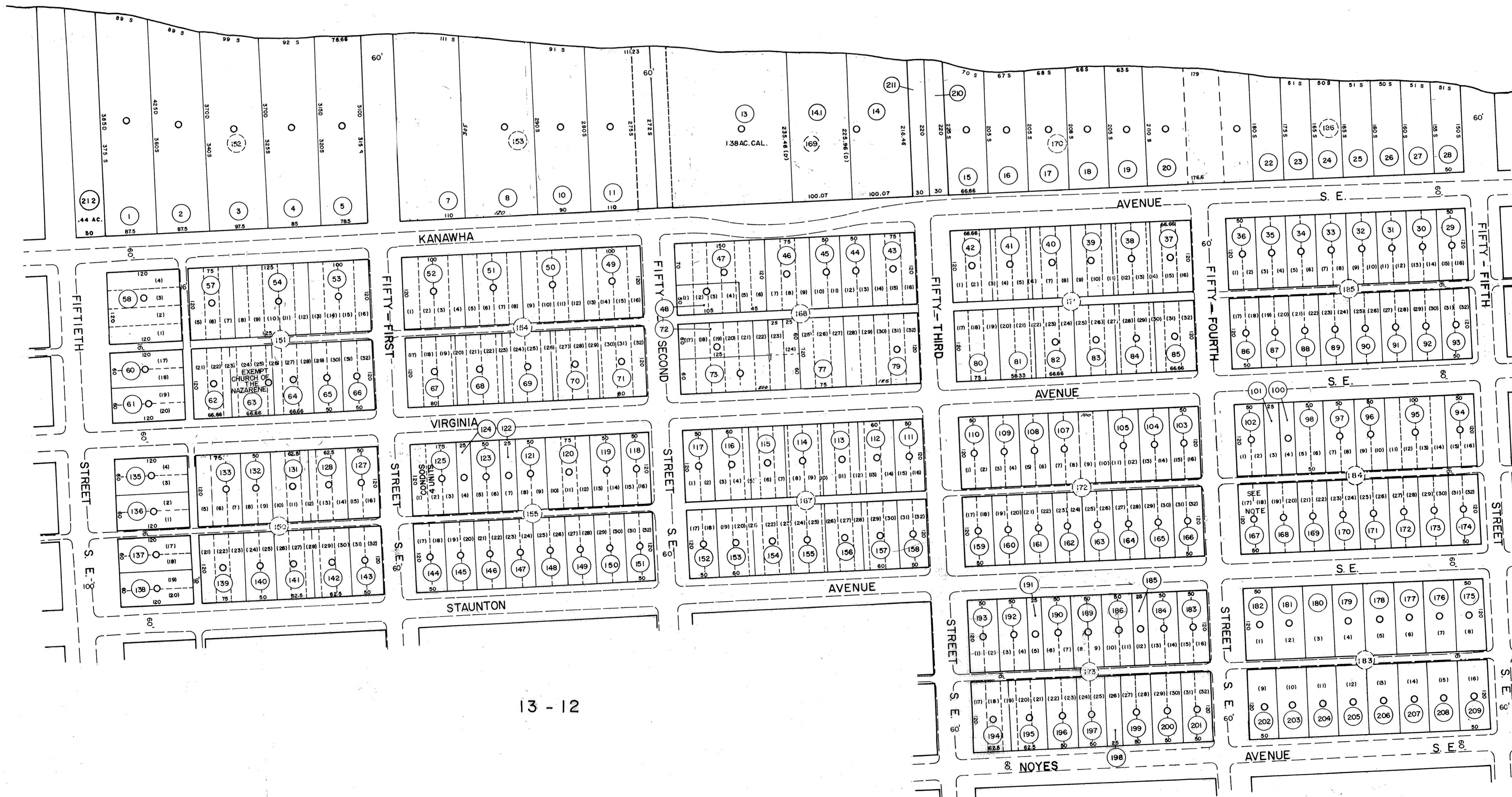


KANAWHA RIVER

13 - 7

13 - 9



13 - 12

13 - 10

NOTE:  
 PARCEL NO. 167 EXEMPT  
 ST. JOHNS GREEK ORTHODOX  
 CHURCH OF CHARLESTON  
 PARCEL NOS. 12, 55, 56, 99, 129, 130, 187, 188 NOT USED

DRAFTED BY: *[Signature]*  
 CHECKED BY: *[Signature]*

FOR TAX PURPOSES ONLY  
 PREPARED BY  
**AERO SERVICE CORPORATION**  
 A DIVISION OF LITTON INDUSTRIES  
 210 E. COURTLAND ST. PHILADELPHIA, PA. 19120

**AMERICAN AIR SURVEYS, INC.**  
 907 PENN AVENUE, PITTSBURGH 22, PA.  
 NEW YORK ATLANTA

**Legend**

Property Line	Original lot line	(115)
Right of way line	Deed lot number (in parenthesis)	(115)
Edge of pavement or roadway	Parcel or index number (in circle)	(115)
Improvement	Improvement	(115)
Corporation line	Railroad	(115)
District line	Scaled Dimension	(115)
County line	Original block number	(115)
Stream	CALCULATED AREA	(115)

**Revisions**

No.	Date	By	Revised To
1	8/1/74	J.E.B.	1-1-99
2	6/14/76	T.L.	7-23-08
3	Revised to 7-1-82	J.E.B.	
4	Revised to 7-1-85	J.E.B.	
5	Revised to 7-1-89	J.E.B.	
6	OGIS 9-15-92	J.E.B.	
7	O.G.I.S. 4-1-96	J.E.B.	
8	1-1-98	J.E.B.	

**KANAWHA COUNTY**  
 Office of Assessor  
 CHARLESTON, WEST VIRGINIA

KANAWHA CITY CORPORATION - 13  
 Map No. 8  
 Photo No.: 1097 - 1099 Scale: 1" = 100'  
 Date, Photography: April, May 1964 Date, Map: 3 - 26 - 6