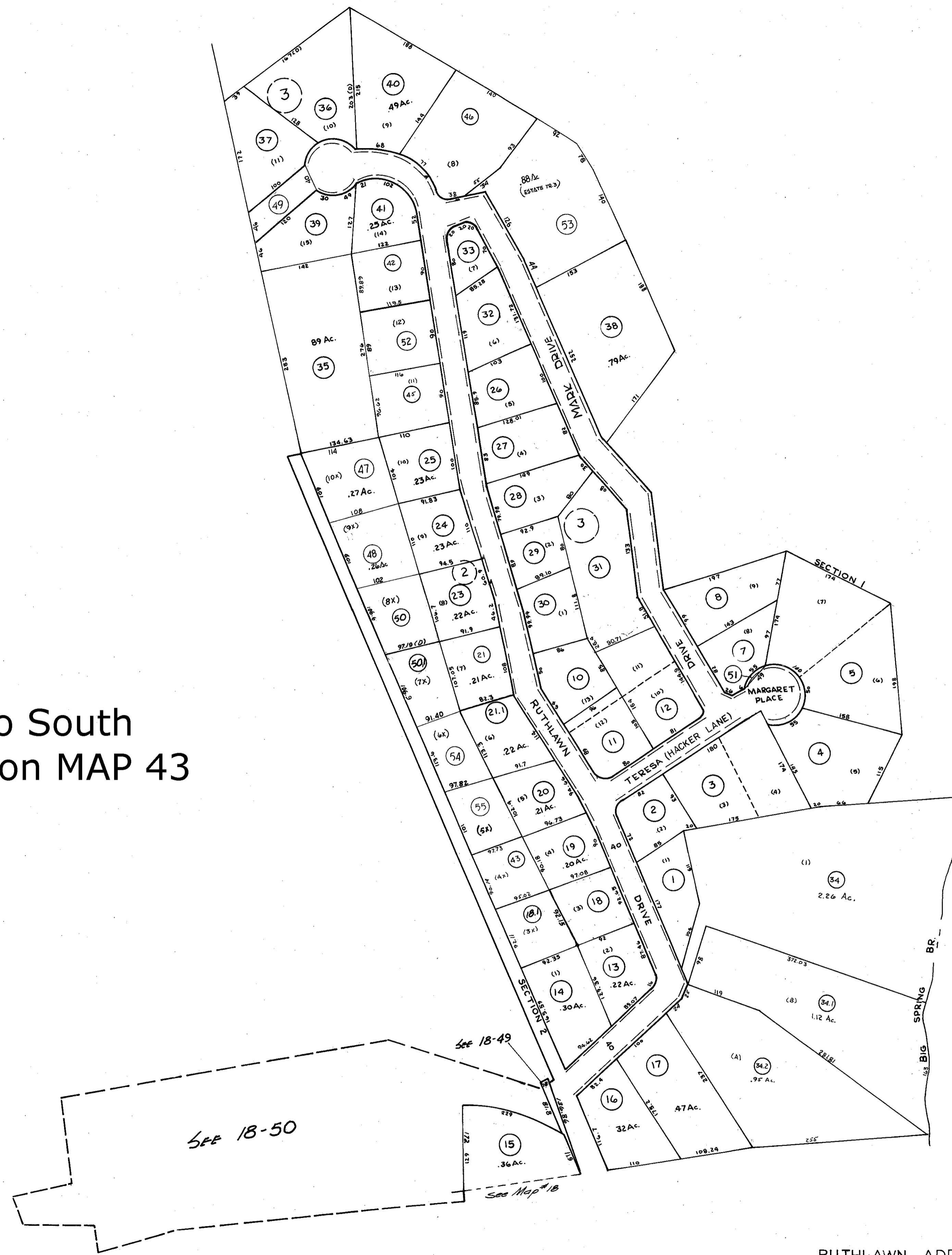


Moved to South
Charleston MAP 43



RUTHLAWN ADDITION

For Tax Purposes Only
Prepared by
LOCAL GOVERNMENT RELATIONS DIV.
STATE TAX COMMISSIONER
CHARLESTON, W.VA.

LEGEND	
Property line	Original lot line
Edge of pavement or roadway	Deed lot number (15)
Corporation line	Parcel or index number (20)
District line	Improvement (O)
County line	Railroad

REVISIONS	
1	2-22-77
2	1/29/79
3	Revised to 7-1-82
4	Revised to 7-1-85
5	July, 1987
6	Revised to 7-1-89
7	O.G.I.S. 8-1-93 J.E.B.
8	6-1-97 J.E.B.

RESTRICTION
All tax maps created under the provisions of reappraisal legislation are the property of the State of West Virginia and the reproduction, copying, distribution or sale of such tax maps or any copies thereof without the written permission of the State Tax Commissioner is prohibited by law.

KEY MAP
#

KANAWHA COUNTY
OFFICE OF ASSESSOR
CHARLESTON, WEST VIRGINIA

JEFFERSON DISTRICT 16
MAP NO. 17-E
Date, Aerial Photography: Photo No:
Date, Map: Scale: 1" = 100'