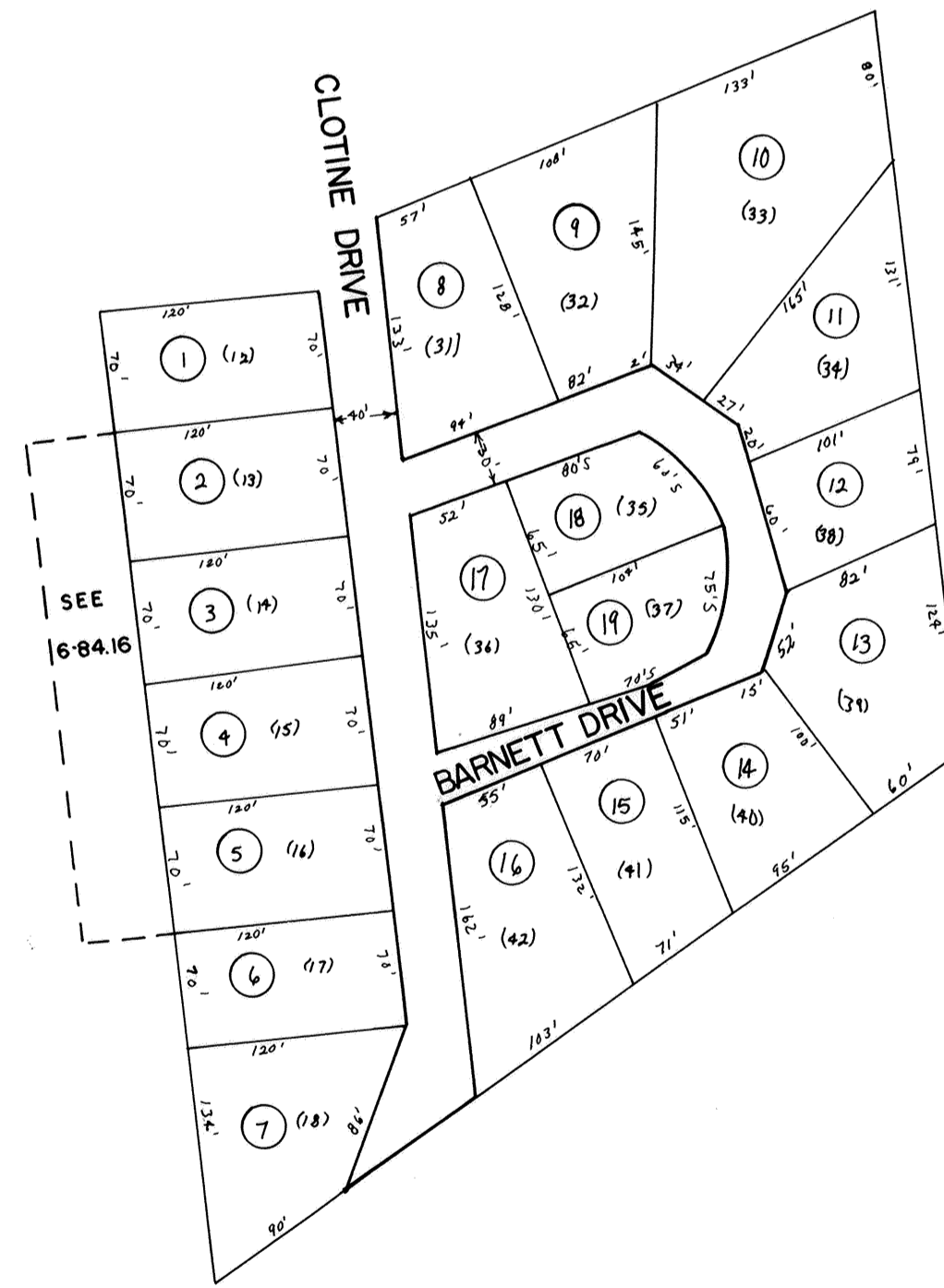


6 - B

Sec. 3 Strawberry Hgts.

16 - 6



STRAWBERRY HEIGHTS



For Tax Purposes Only

Prepared by
 LOCAL GOVERNMENT RELATIONS DIV.
 STATE TAX COMMISSIONER
 CHARLESTON, W.VA.

LEGEND

Property line	—————	Original lot line	- - - - - (15)
Edge of pavement or roadway	—————	Deed lot number	(15)
Corporation line	—————	Parcel or index number	⊙
District line	—————	Improvement	○
County line	—————	Railroad	—+—+—+—

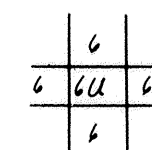
REVISIONS

1	ADD NEW LOTS
2	REVISED TO 7-1-85
3	6-1-97 J.E.B
4	1-1-99 J.E.B
5	11-15-06 J.A.B.
6	
7	
8	

RESTRICTION

All tax maps created under the provisions of reappraisal legislation are the property of the State of West Virginia and the reproduction, copying, distribution or sale of such tax maps or any copies thereof without the written permission of the State Tax Commissioner is prohibited by law.

KEY MAP



KANAWHA COUNTY

Office of Assessor

CHARLESTON, WEST VIRGINIA

JEFFERSON DISTRICT - 16

Map No. 6U

Date, Aerial Photography:
 Photo No:

Date, Map: 5-80
 Scale: 1"=100'