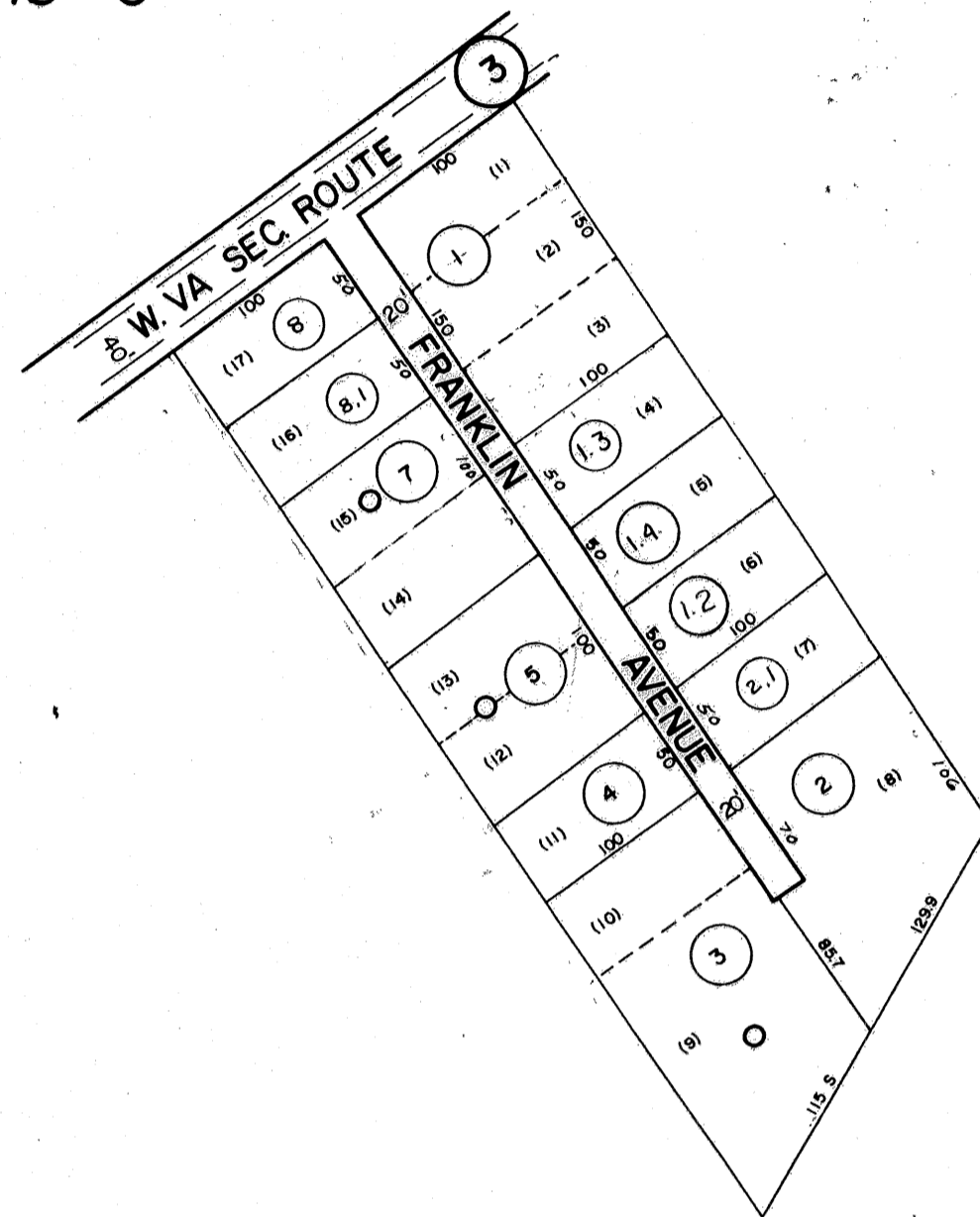


16-6

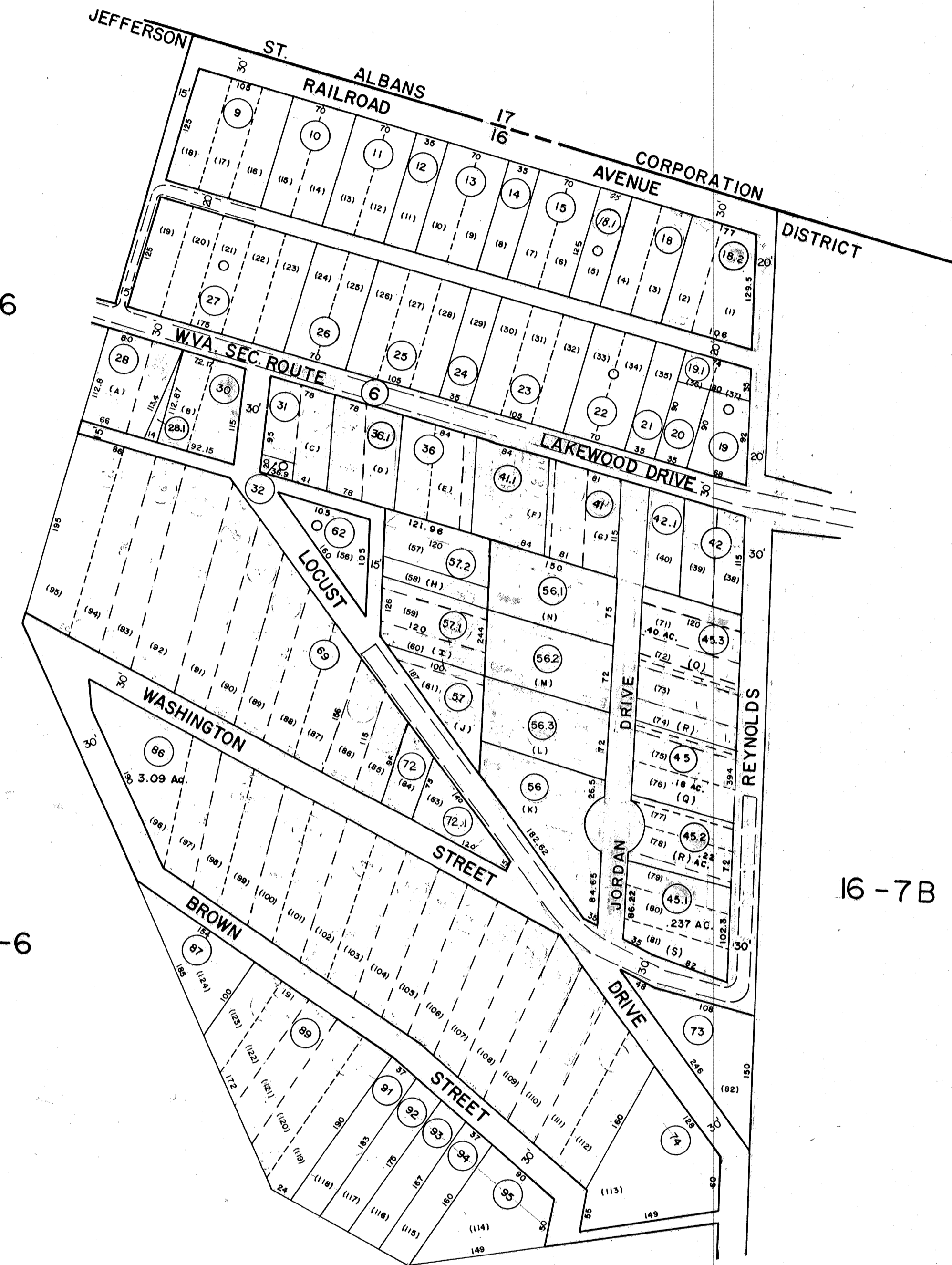


16-6

16-6

INSET 1

16-6



16-6

16-12 H

INSET 2

16-7B

16-7B

NOTE:
 PARCEL NOS. 9,10,11,12,13,14,15, 23,24,25,26,27 - EXEMPT
 BOARD OF EDUCATION

DRAFTED BY: *SM*
 CHECKED BY: *ES*

FOR TAX PURPOSES ONLY

AERO SERVICE CORPORATION
 A DIVISION OF LITTON INDUSTRIES
 216 E. COURTLAND ST. PHILADELPHIA, PA. 19120

PREPARED BY

AMERICAN AIR SURVEYS, INC.
 907 PENN AVENUE, PITTSBURGH 22, PA.
 NEW YORK ATLANTA

Legend

Property line	Original lot line	(15)
Right of way line	Deed lot number (in parenthesis)	(15)
Edge of pavement or roadway	Parcel or index number (in circle)	(15)
Corporation line	Improvement	(15)
District line	Railroad	(15)
County line	Scaled Dimension	(15)
Stream	Original block number	(15)

Revisions

No.	Date	By	Description
1	5/15/72	J.A.P.	6-1-97 J.E.B.
2	11 Aug. 73	P.S.	1-1-99 J.E.B.
3	1-24-74	T.G.	1-20-2000 J.A.B.
4			10-02-02 J.A.B.
5			3-1-03 J.A.B.
6			3-24-03 J.A.B.
7	8-1-93	J.E.B.	7-11-04 J.A.B.
8	6-20-96	J.E.B.	11-15-06 J.A.B.

KANAWHA COUNTY
 Office of Assessor
CHARLESTON, WEST VIRGINIA

JEFFERSON DISTRICT - 16
 Map No. 6Q

Photo No.: 506 Scale: 1" = 100'
 Date, Photography: April, May 1964 Date, Map: 9-30-65