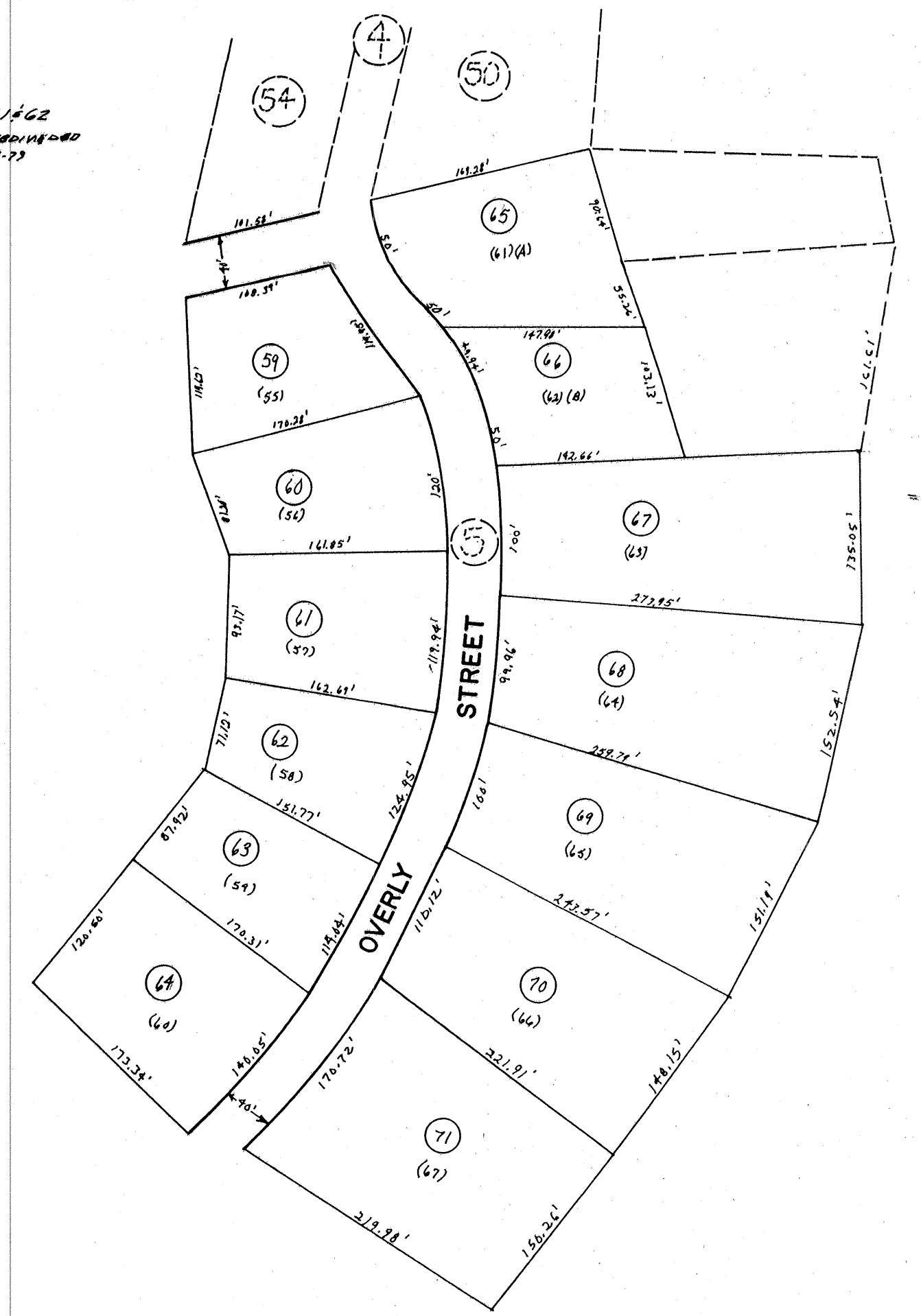
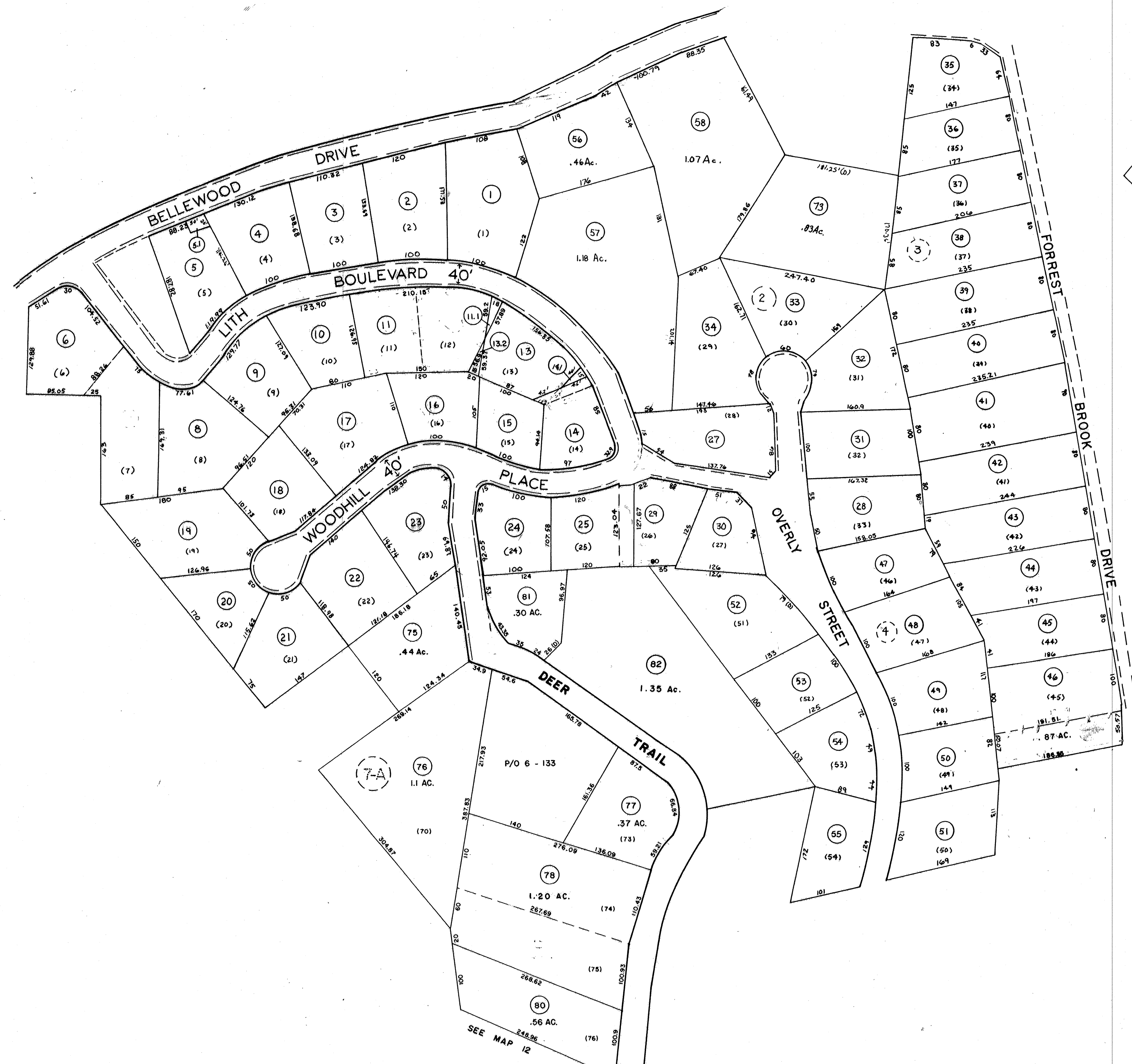


Lot 6162
 78-50001-00
 3-28-73



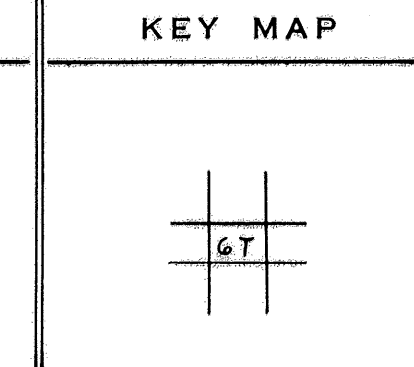
LAKESIDE IN THE HILLS
 Sec's 1,2,3,4.

For Tax Purposes Only
 Prepared by
 LOCAL GOVERNMENT RELATIONS DIV.
 STATE TAX COMMISSIONER
 CHARLESTON, W.VA.

LEGEND	
Property line	—————
Edge of pavement or roadway	- - - - -
Corporation line	- · - · -
District line	- - - - -
County line	—————
Original lot line	- - - - -
Deed lot number	(15)
Parcel or index number	(27)
Improvement	o
Railroad	—————

REVISIONS			
1	3-12-75	New	T.G.
2	3-28-77		J.C.
3	2-5-78		T.G.
4	4-1-82		J.B.
5	Revised 4-7-85		J.B.
6	Revised 7-1-87		J.B.
7	Revised 7-21-89		J.B.
8	OGIS 7-26-91		J.B.
	OGIS 6-20-96		J.E.B.
	6-1-97		J.E.B.
	1-22-04		J.A.B.

RESTRICTION
 All tax maps created under the provisions of reappraisal legislation are the property of the State of West Virginia and the reproduction, copying, distribution or sale of such tax maps or any copies thereof without the written permission of the State Tax Commissioner is prohibited by law.



KANAWHA COUNTY
 Office of Assessor
 CHARLESTON, WEST VIRGINIA

JEFFERSON DISTRICT — 16
Map No. 6T
 Date, Aerial Photography: _____
 Photo No: _____
 Date, Map: 3-75
 Scale: 1" = 100'