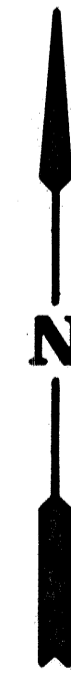
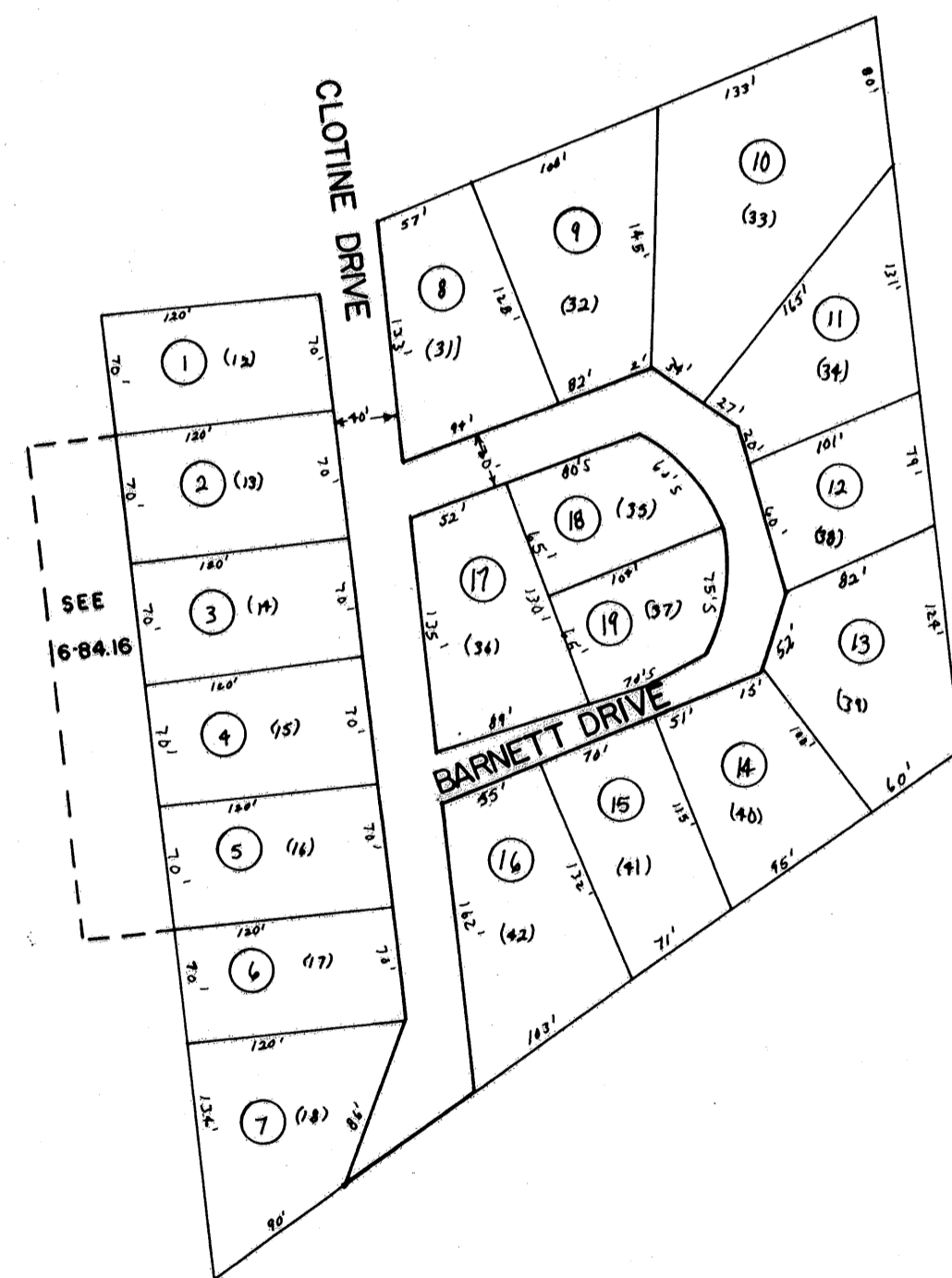


6 - B

Sec. 3 Strawberry Hgts.

16 - 6



STRAWBERRY HEIGHTS

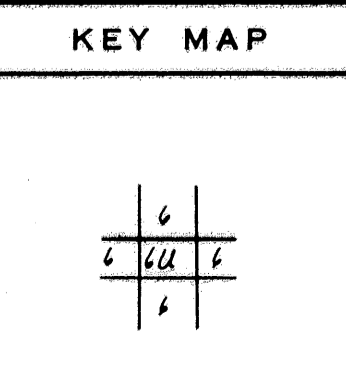
**For Tax Purposes Only**  
 Prepared by  
 LOCAL GOVERNMENT RELATIONS DIV.  
 STATE TAX COMMISSIONER  
 CHARLESTON, W.VA.

LEGEND	
Property line	—————
Edge of pavement or roadway	- - - - -
Corporation line	- · - · -
District line	- - - - -
County line	- - - - -
Original lot line	- - - - -
Dead lot number	(15)
Parcel or index number	Ⓢ
Improvement	○
Railroad	—+—+—+—

REVISIONS	
1	As per 2004/05/06
2	Revised to 7-1-85 J.E.B.
3	6-1-97 J.E.B.
4	1-1-99 J.E.B.
5	11-15-06 J.A.B.
6	
7	
8	

**RESTRICTION**

All tax maps created under the provisions of reappraisal legislation are the property of the State of West Virginia and the reproduction, copying, distribution or sale of such tax maps or any copies thereof without the written permission of the State Tax Commissioner is prohibited by law.



**KANAWHA COUNTY**  
 Office of Assessor  
 CHARLESTON, WEST VIRGINIA.

JEFFERSON DISTRICT - 16  
**Map No. 6U**  
 Date, Aerial Photography: \_\_\_\_\_ Date, Map: 5-80  
 Photo No: \_\_\_\_\_ Scale: 1"=100'

H.T. HALL