

SEE JEFFERSON TM-6

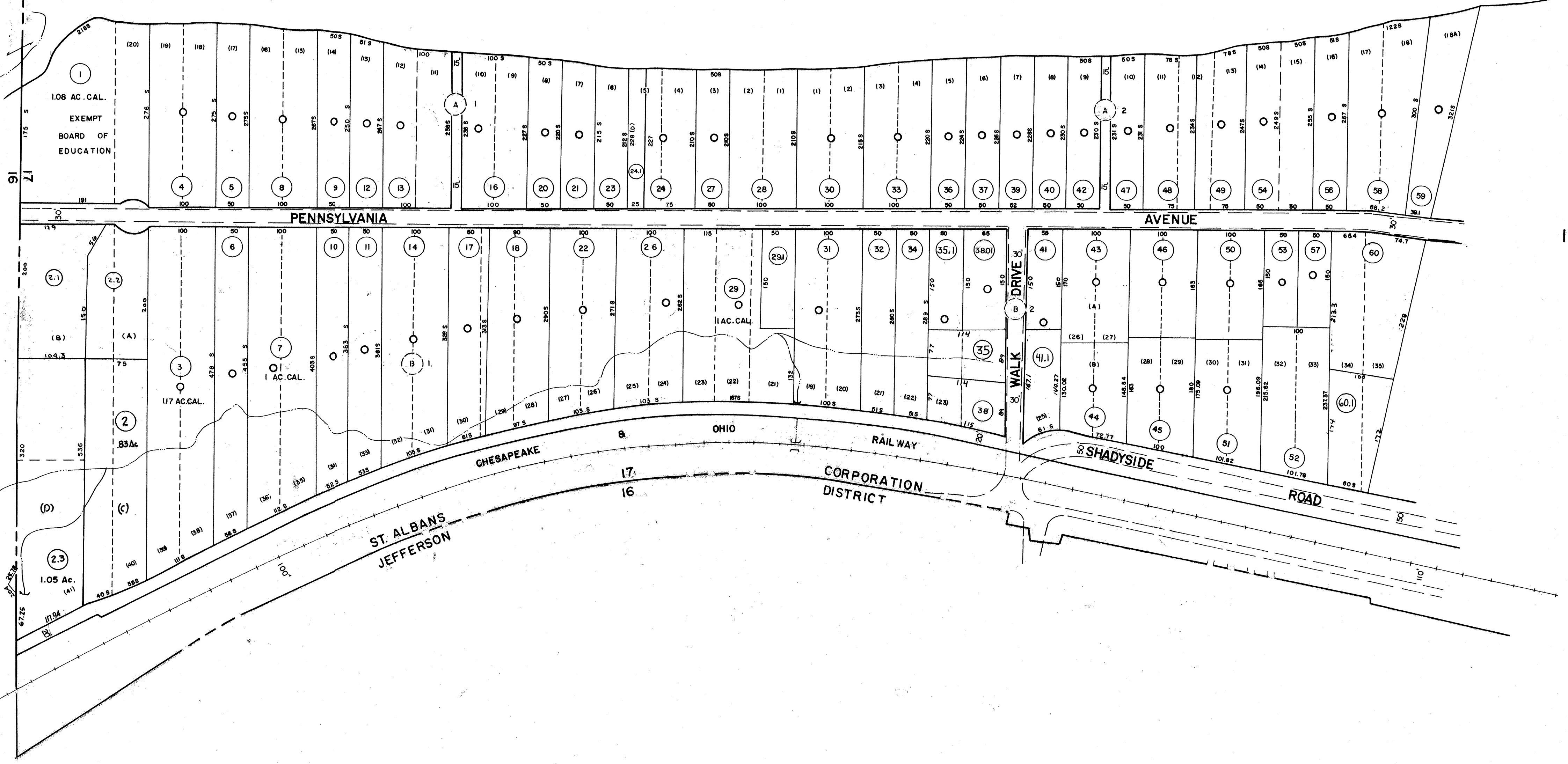
61  
17.22 AC.  
HAYES JR. HIGH

JEFFERSON ST. ALBANS 16 17

DISTRICT CORPORATION

COAL RIVER

SEE ST. ALBANS TM 33



17-28

DRAFTED BY: [Signature]  
CHECKED BY: [Signature]

NOTE:  
PARCEL NOS. 19,25 NOT USED

FOR TAX PURPOSES ONLY

PREPARED BY

**AERO SERVICE CORPORATION**  
A DIVISION OF LITTON INDUSTRIES  
210 E. COURTLAND ST. PHILADELPHIA, PA. 19120

**AMERICAN AIR SURVEYS, INC.**  
907 PENN AVENUE, PITTSBURGH 22, PA.  
NEW YORK ATLANTA

**Legend**

Property line	—	Original lot line	—
Right of way line	—	Deed lot number (in parenthesis)	(15)
Edge of pavement or roadway	—	Parcel or index number (in circle)	⊙
Corporation line	—	Improvement	—
District line	—	Railroad	—
County line	—	Scaled Dimension	—
Stream	—	Original block number	—
		CALCULATED AREA	CAL

**Revisions**

1	9-4-74	T.G.	9	8-8-03	J.A.B.	17
2	2/22/84		10	11-10-06	J.A.B.	18
3	2-2-79		11			19
4	Revised to 7-1-82		12			20
5	Revised to 7-1-85		13			21
6	July, 1987	TR	14			22
7	O.G.I.S	6-20-96	J.E.B			23
8		3-1-97	J.E.B			24

**KANAWHA COUNTY**  
Office of Assessor  
**CHARLESTON, WEST VIRGINIA**

ST. ALBANS CORPORATION - 17

Map No. 27

Photo No.: 1058  
Date, Photography: April, May 1964  
Scale: 1"=100'  
Date, Map: 2-26-65