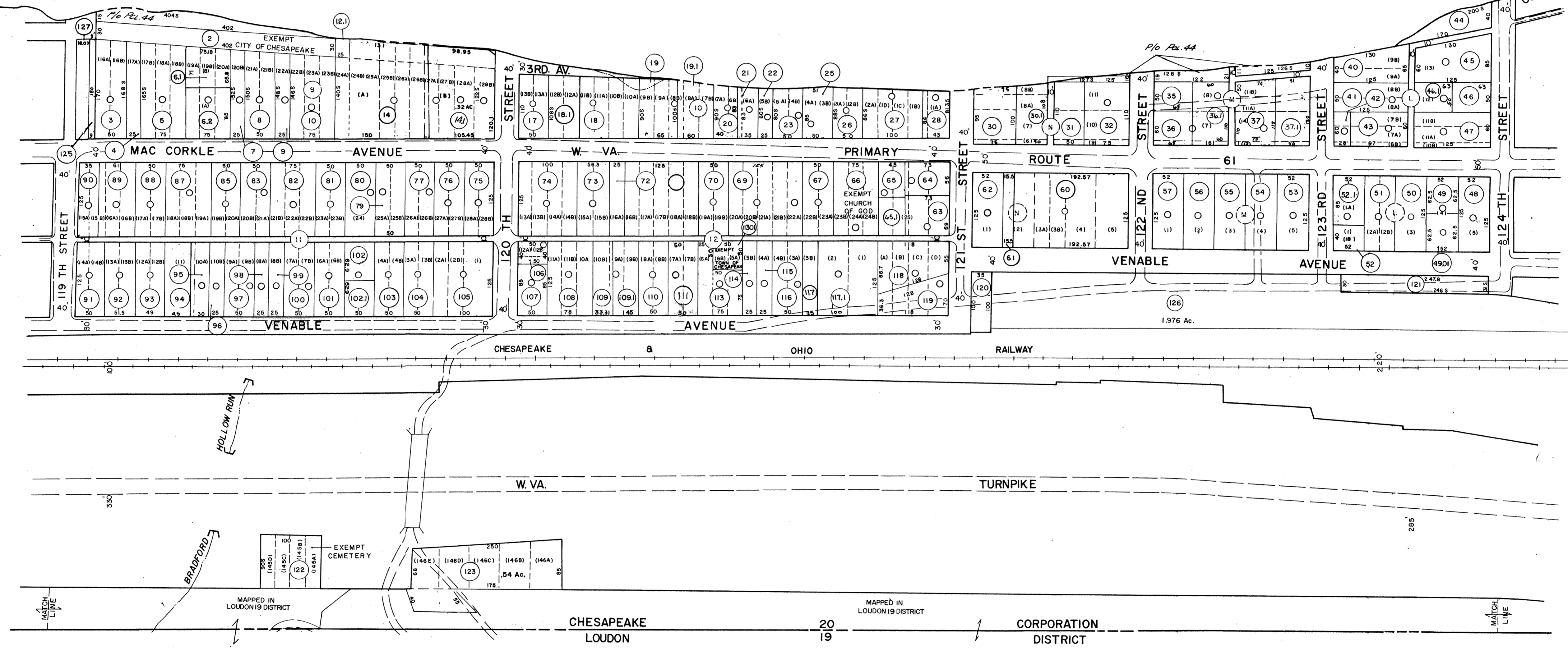


KANAWHA RIVER

CHESAPEAKE

CORPORATION

20 - 1



DRAFTED BY: LA  
 CHECKED BY: ES

NOTE:  
 PARCEL NO'S 59-84-86-78 NOT USED  
 PARCEL NO'S 11301 EXEMPT TOWN OF  
 CHESAPEAKE

FOR TAX PURPOSES ONLY  
 PREPARED BY

**AERO SERVICE CORPORATION**  
 A DIVISION OF LITTON INDUSTRIES  
 210 E. COURTLAND ST. PHILADELPHIA, PA. 19120

**AMERICAN AIR SURVEYS, INC.**  
 907 PENN AVENUE, PITTSBURGH 22, PA.  
 NEW YORK ATLANTA

**Legend**

Property Line	—	Original lot line	—
Right of way line	—	Deed lot number (in parenthesis)	(15)
Edge of pavement or roadway	—	Parcel or index number (in circle)	(10)
Corporation line	—	Improvement	—
District line	—	Railroad	—
County line	—	Scaled Dimension	S
Stream	—	Original block number	(22)

**Revisions**

1	2/10/76	30	9	O.G.I.S	4-1-96	J.E.B.	17
2	1/9/79	30	10		3-1-97	J.E.B.	18
3	7-1-85	7-1-85	11	LES	1-1-99	J.E.B.	19
4	7-1-85	7-1-85	12	LES	2-19-2001	J.A.B.	20
5	7-1-85	7-1-85	13	LES	7-30-08	J.A.B.	21
6	July, 1987	7-1-85	14	TRL			22
7	7-1-89	7-1-85	15	TRL			23
8	OGS	4-13-94	16	CS			24

**KANAWHA COUNTY**  
 Office of Assessor  
 CHARLESTON, WEST VIRGINIA

CHESAPEAKE CORPORATION - 20

Map No. 2

Photo No.: 294 Scale: 1" = 100'  
 Date, Photography: April, May 1964 Date, Map: 7-28-65