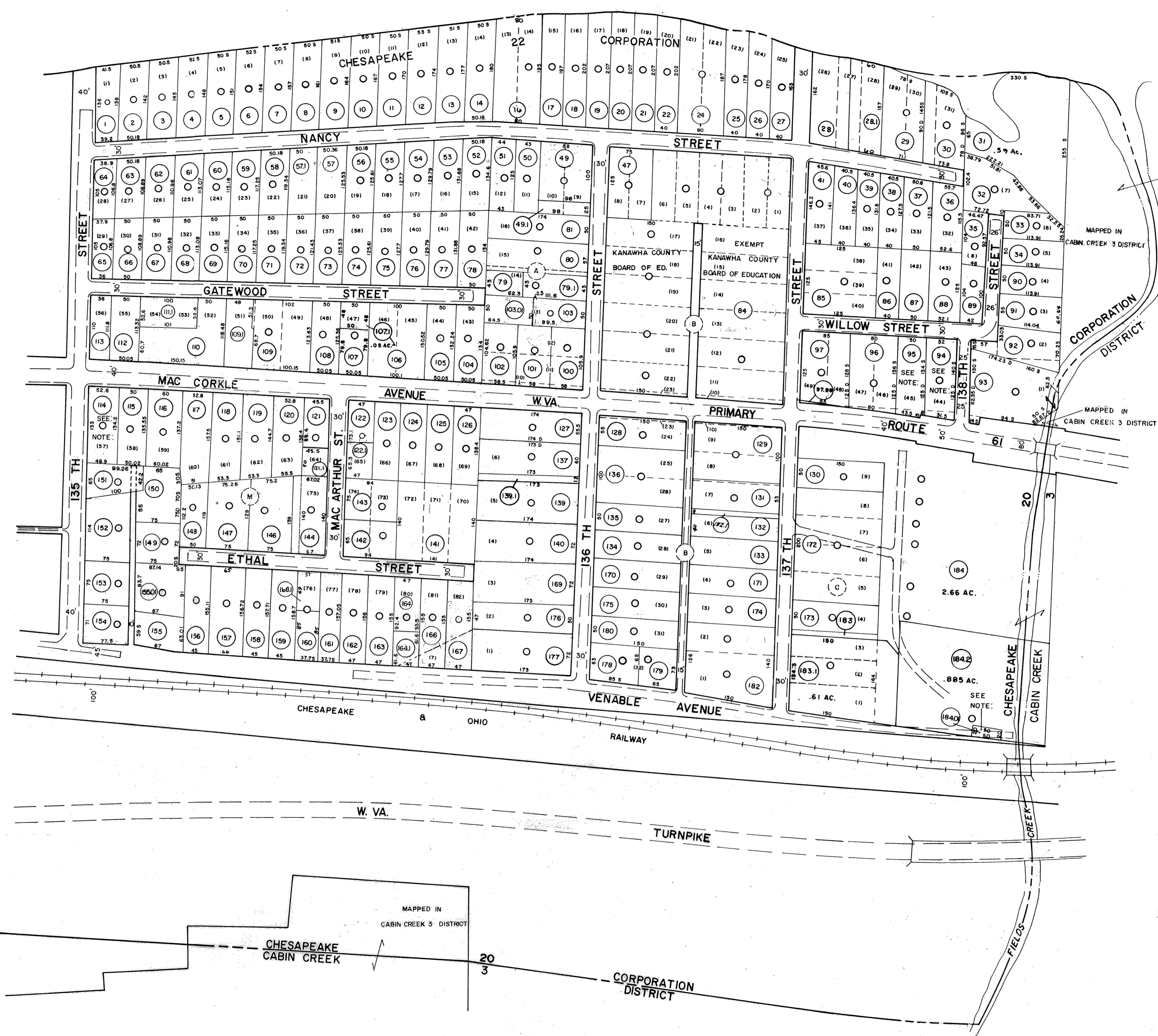


KANAWHA RIVER



19 - 1

DRAFTED BY: *B.M.*
 CHECKED BY: *ES*

FOR TAX PURPOSES ONLY
 PREPARED BY
AERO SERVICE CORPORATION
 A DIVISION OF LITTON INDUSTRIES
 210 E. COURTLAND ST., PHILADELPHIA, PA. 19120

AMERICAN AIR SURVEYS, INC.
 907 PENN AVENUE, PITTSBURGH 22, PA.
 NEW YORK ATLANTA

Legend

Property line	Original lot line
Right of way line	Dead lot number (in parenthesis)
Edge of pavement or roadway	Parcel or index number (in circle)
Corporation line	Improvement
District line	Railroad
County line	Scaled Dimension
Stream	Original block number
	CALCULATED AREA

Revisions

1	8/15/77	9	1-1-99 J.E.B.	17
2	1/9/79	10	7-30-08 J.A.B.	18
3	Revised to 7/1/82	11		19
4	Revised to 7-1-85	12		20
5	July, 1987	13		21
6	7-1-89	14		22
7	OGIS 4-13-94	15		23
8	3-1-97	16		24

KANAWHA COUNTY
 Office of Assessor
 CHARLESTON, WEST VIRGINIA

NOTE:
 PARCEL NOS: 184.01 EXEMPT
 TOWN OF CHESAPEAKE
 PARCEL NOS: 94 & 95 - EXEMPT
 CHURCH OF CHRIST
 PARCEL NO: 114 - EXEMPT
 CHESAPEAKE METHODIST
 CHURCH
 PARCEL NOS: 23, 43, 46, 168, 145 NOT USED

CHESAPEAKE CORPORATION - 20
 Map No. 5
 Photo No.: 296 Scale: 1" = 100'
 Date, Photography: April, May 1964 Date, Map: 7-28-65