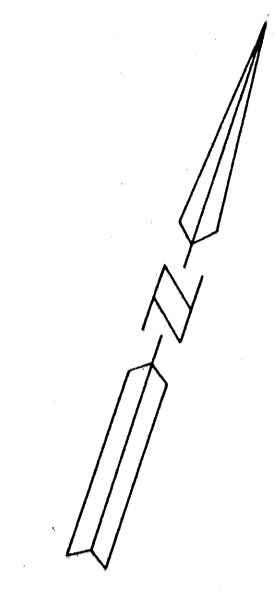
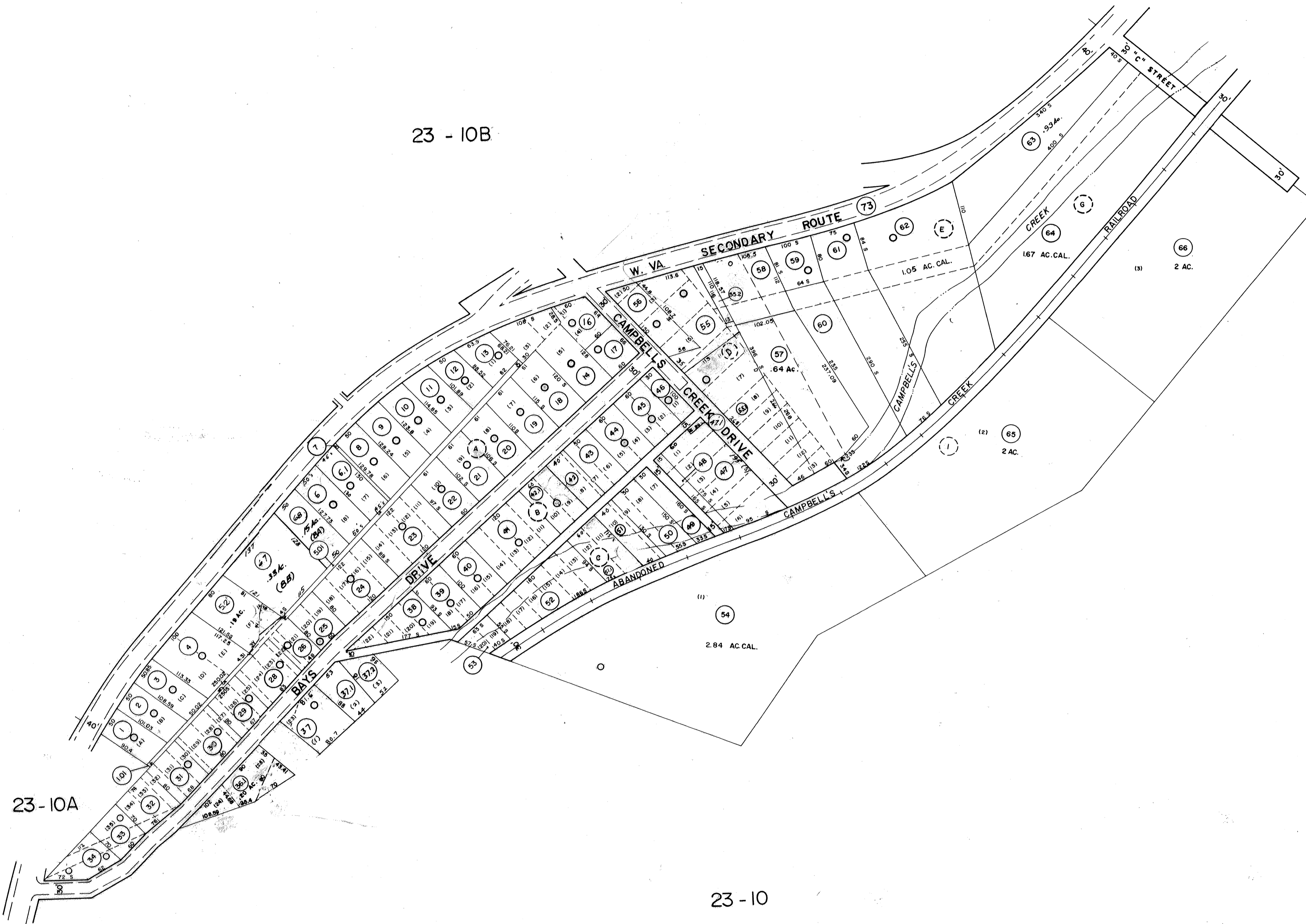


23-11A



23-10B



23-10A

23-10

DRAFTED BY: *AM*
CHECKED BY: *ES*

FOR TAX PURPOSES ONLY

PREPARED BY

AERO SERVICE
CORPORATION
A DIVISION OF LITTON INDUSTRIES
210 E. COURTLAND ST. PHILADELPHIA, PA. 19120

AMERICAN AIR SURVEYS, INC.
907 PENN AVENUE, PITTSBURGH 22, PA.
NEW YORK ATLANTA

Legend

Property line	—	Original lot line	—
Right of way line	—	Deed lot number (in parenthesis)	(15)
Edge of pavement or roadway	—	Parcel or index number (in circle)	(10)
Corporation line	—	Improvement	○
District line	—	Railroad	—
County line	—	Scaled Dimension	5
Stream	—	Original block number	22
		CALCULATED AREA	CAL.

Revisions

1	11-6-75	DS	9	5-7-06 J.A.B.	17
2	4/7/78	2LR	10		18
3	Revised by 7-1-80	2LR	11		19
4	Revised by 7-1-85	2LR	12		20
5	REV TO 7-1-87	NCS	13		21
6	OGIS 8/24/93	SAJ	14		22
7	O.G.I.S 9-1-96	J.E.B	15		23
8	7-1-97	J.E.B	16		24

KANAWHA COUNTY
Office of Assessor
CHARLESTON, WEST VIRGINIA

MALDEN DISTRICT - 23

Map No. 10-C

Photo No.: 148 Scale: 1"=100'
Date, Photography: April, May, 1964 Date, Map: 3-31-66