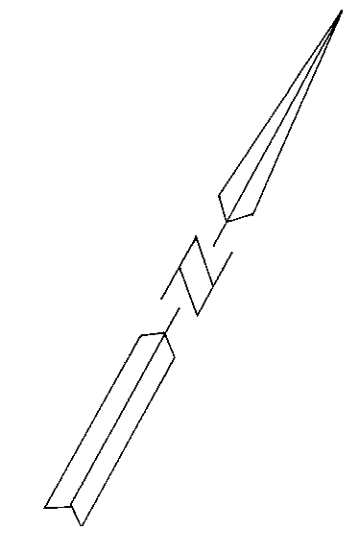
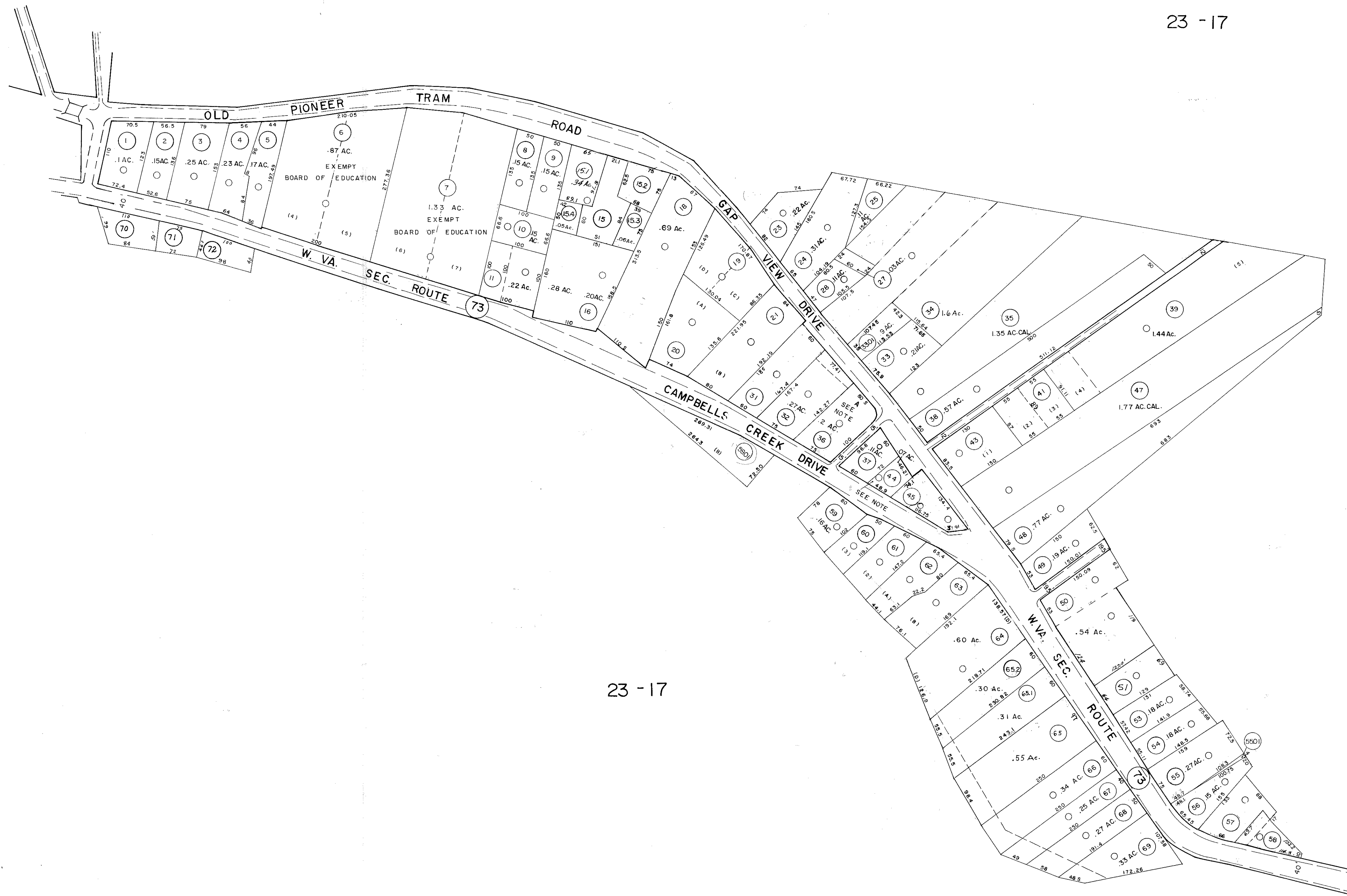


23-17C

23-17 F

23-17



23-17

23-17

NOTE:
 PARCEL NOS. 36,44 - EXEMPT
 METHODIST CHURCH OF COAL FORK

DRAFTED BY: A.M.
 CHECKED BY: E.S.

FOR TAX PURPOSES ONLY

PREPARED BY

AERO SERVICE CORPORATION
 A DIVISION OF LITTON INDUSTRIES
 210 E. COURTLAND ST., PHILADELPHIA, PA. 19120



AMERICAN AIR SURVEYS, INC.
 907 PENN AVENUE, PITTSBURGH 22, PA.
 NEW YORK ATLANTA

Legend

Property line	-----	Original lot line	-----
Right of way line	=====	Deed lot number (in parenthesis)	(15)
Edge of pavement or roadway	-----	Parcel or index number (in circle)	(99)
Corporation line	-----	Improvement	O
District line	-----	Railroad	-----
County line	-----	Scaled Dimension	S
Stream	~~~~~	Original block number	5
		CALCULATED AREA	CAL.

Revisions

1	2-5-74	T. Gentry	9	O.G.I.S	9-1-96	J.E.B	17
2	11/2/75	J.C.	10		7-1-97	J.E.B	18
3	2/7/97	S.L.R.	11	2-21-2000	J.A.B.		19
4	Revised to 7-1-82		12				20
5	Revised to 7-1-85		13				21
6	Revised to 7-1-87		14				22
7	Revised to 7-1-89	R.E.B	15				23
8	OGIS	8/26/93	SAJ	16			24

KANAWHA COUNTY
 Office of Assessor
 CHARLESTON, WEST VIRGINIA

MALDEN DISTRICT - 23
 Map No. 176

Photo No.: 125 Scale: 1" = 100'
 Date, Photography: April, May 1964 Date, Map: 3-31-66