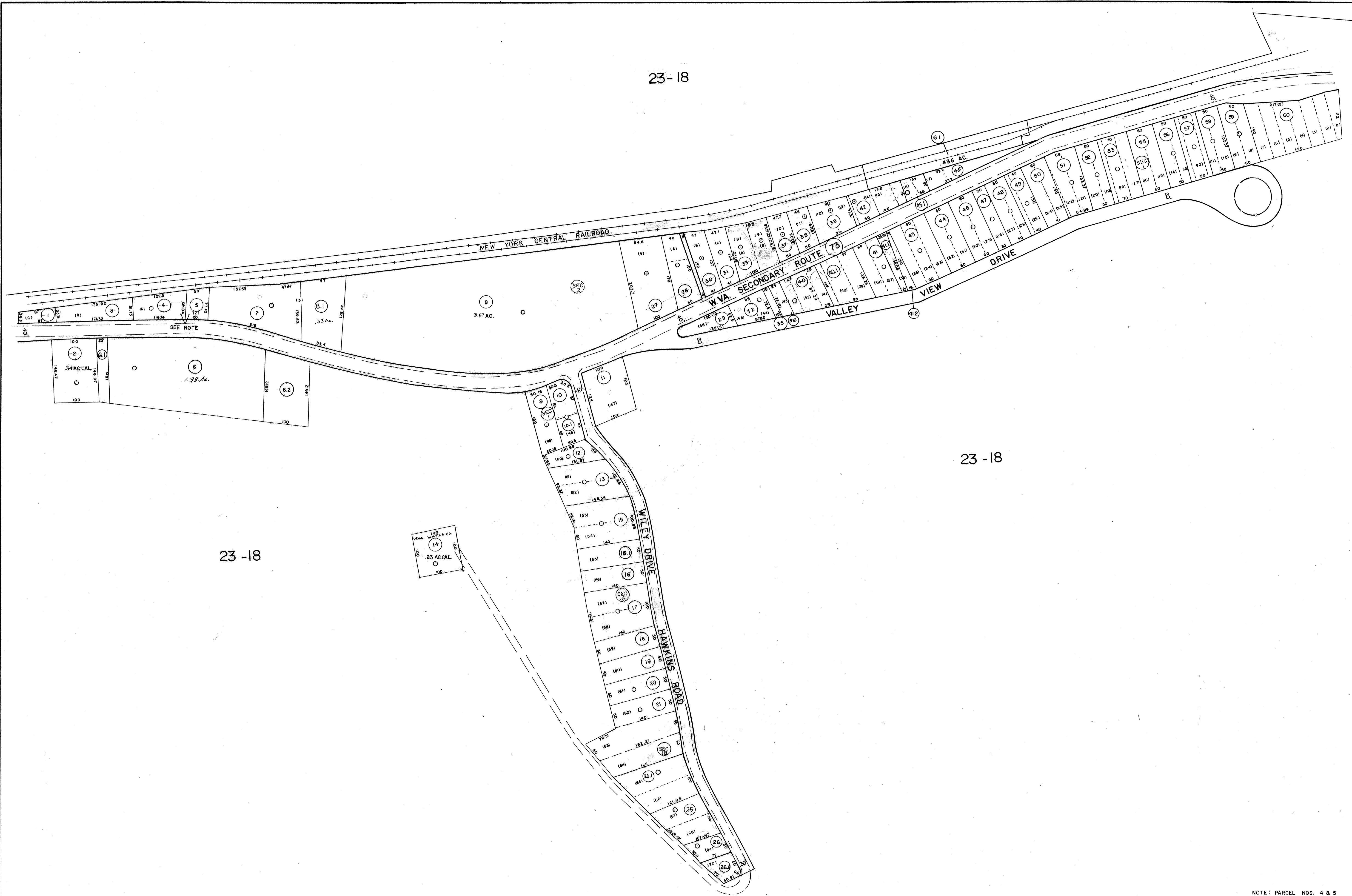


23-18

23-17D



23-18

23-18

NOTE: PARCEL NOS. 4 & 5 EXEMPT EMANUEL CHAPEL

DRAFTED BY: *ES*
CHECKED BY: *ES*

FOR TAX PURPOSES ONLY

PREPARED BY

AERO SERVICE
CORPORATION
A DIVISION OF LITTON INDUSTRIES
210 E. COURTLAND ST. PHILADELPHIA, PA. 19120



AMERICAN AIR SURVEYS, INC.
907 PENN AVENUE, PITTSBURGH 22, PA.
NEW YORK ATLANTA

Legend

Property line	—	Original lot line	—
Right of way line	—	Dead lot number (in parenthesis)	(15)
Edge of pavement or roadway	—	Parcel or index number (in circle)	⊙
Corporation line	—	Improvement	—
District line	—	Railroad	—
County line	—	Scaled Dimension	S
Stream	—	Original block number	⊙
		CALCULATED AREA	CAL.

Revisions

1	FEB. 74 PAM	9	O.G.I.S. 9-1-96 J.E.B	17
2	11-6-75 DS	10	7-1-97 J.E.B	18
3	3/7/77 SLA	11	1-1-99 J.E.B	19
4	Revised 7-1-82 J.E.B	12	5-9-06 J.A.B.	20
5	Revised 6-7-83 J.E.B	13		21
6	Revised 6-7-85 J.E.B	14		22
7	Revised 12-7-89 J.E.B	15		23
8	OGIS 8/26/93 SAJ	16		24

KANAWHA COUNTY
Office of Assessor
CHARLESTON, WEST VIRGINIA

MALDEN DISTRICT - 23

Map No. 18C

Photo No.: 125 Scale: 1"=100'
Date, Photography: April, May 1964 Date, Map: 3-31-66