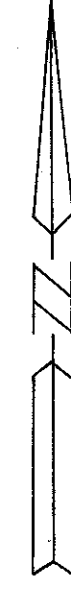
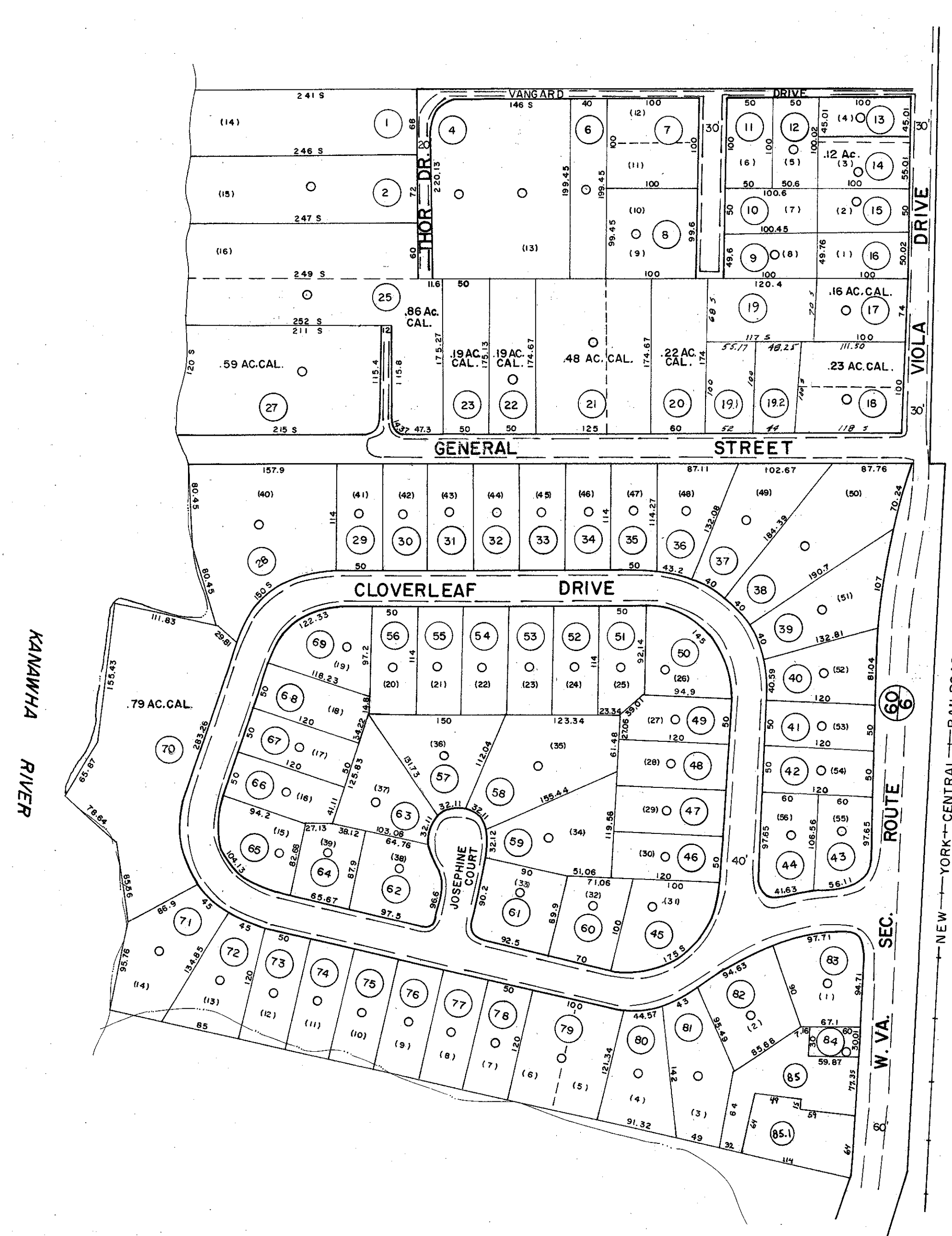


23-18

23-18

23-18



23-18

DRAFTED BY: *RM*  
 CHECKED BY: *LS*

FOR TAX PURPOSES ONLY

PREPARED BY

**AERO SERVICE CORPORATION**  
 A DIVISION OF LITTON INDUSTRIES  
 210 E. COURTLAND ST. PHILADELPHIA PA 19120



**AMERICAN AIR SURVEYS, INC.**  
 907 PENN AVENUE, PITTSBURGH 22, PA.  
 NEW YORK ATLANTA

**Legend**

Property Line	—————	Original lot line	—————
Right of way line	—————	Deed lot number (in parenthesis)	(15)
Edge of pavement or roadway	—————	Parcel or index number (in circle)	(15)
Corporation line	—————	Improvement	○
District line	—————	Railroad	—+—+—+—
County line	—————	Scaled Dimension	S
Stream	~~~~~	Original block number	23
		CALCULATED AREA	CAL.

**Revisions**

No.	Date	By	For
1	2/7/78	S.L.R.	9
2	Revised to 7-1-82	J.P.	10
3	Revised to 7-1-85	J.P.	11
4	Revised to 7-1-89	REB	12
5	OGIS 8/26/93	SAJ	13
6	T. 1-97	J.E.B	14
7			15
8			16

**KANAWHA COUNTY**

Office of Assessor

CHARLESTON, WEST VIRGINIA

MALDEN DISTRICT-23

Map No.18D

Photo No.: 125 Scale: 1"=100'

Date, Photography: April, May 1964 Date, Map: 3-31-66