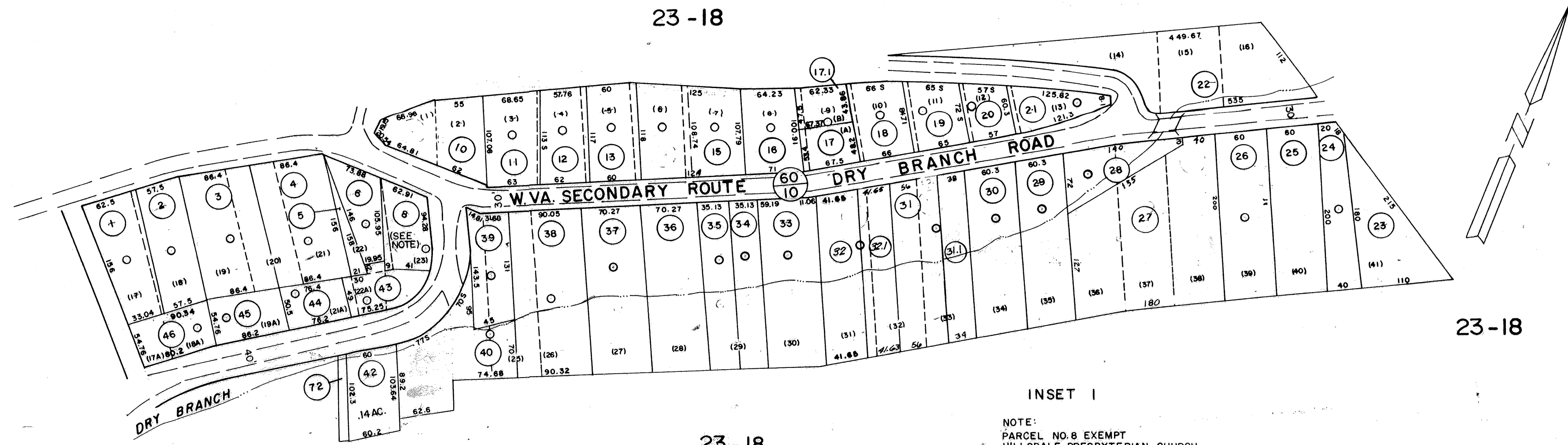
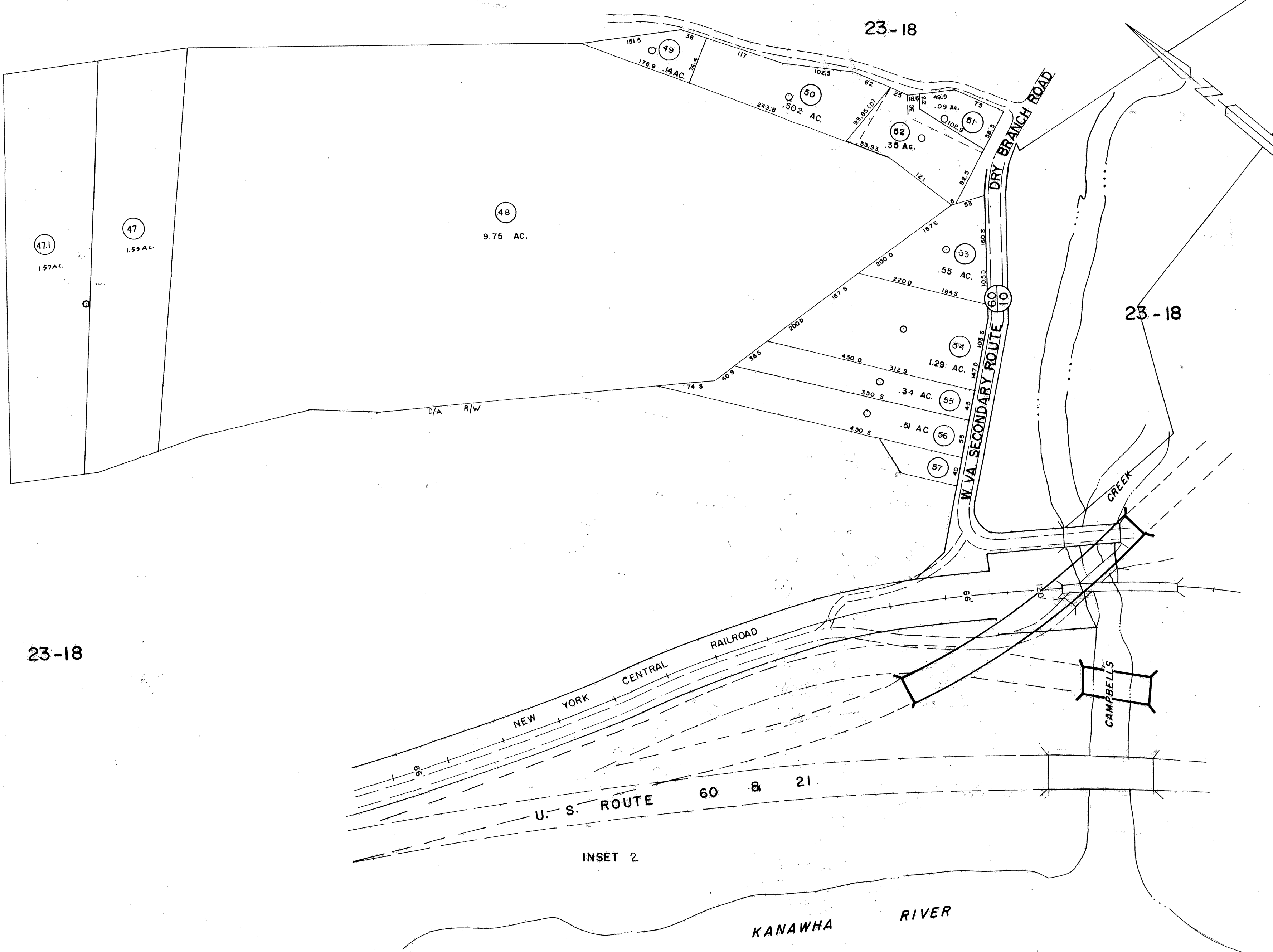


23-18



23-18

INSET 1  
NOTE:  
PARCEL NO. 8 EXEMPT  
HILLSDALE PRESBYTERIAN CHURCH  
PARCEL NO. 7 NOT USED



23-18

23-18

DRAFTED BY: *P.M.*  
CHECKED BY: *E.S.*

FOR TAX PURPOSES ONLY

PREPARED BY  
**AERO SERVICE CORPORATION**  
 A DIVISION OF LITTON INDUSTRIES  
 210 E. COURTLAND ST., PHILADELPHIA, PA. 19120

**AMERICAN AIR SURVEYS, INC.**  
 907 PENN AVENUE, PITTSBURGH 22, PA.  
 NEW YORK ATLANTA

**Legend**

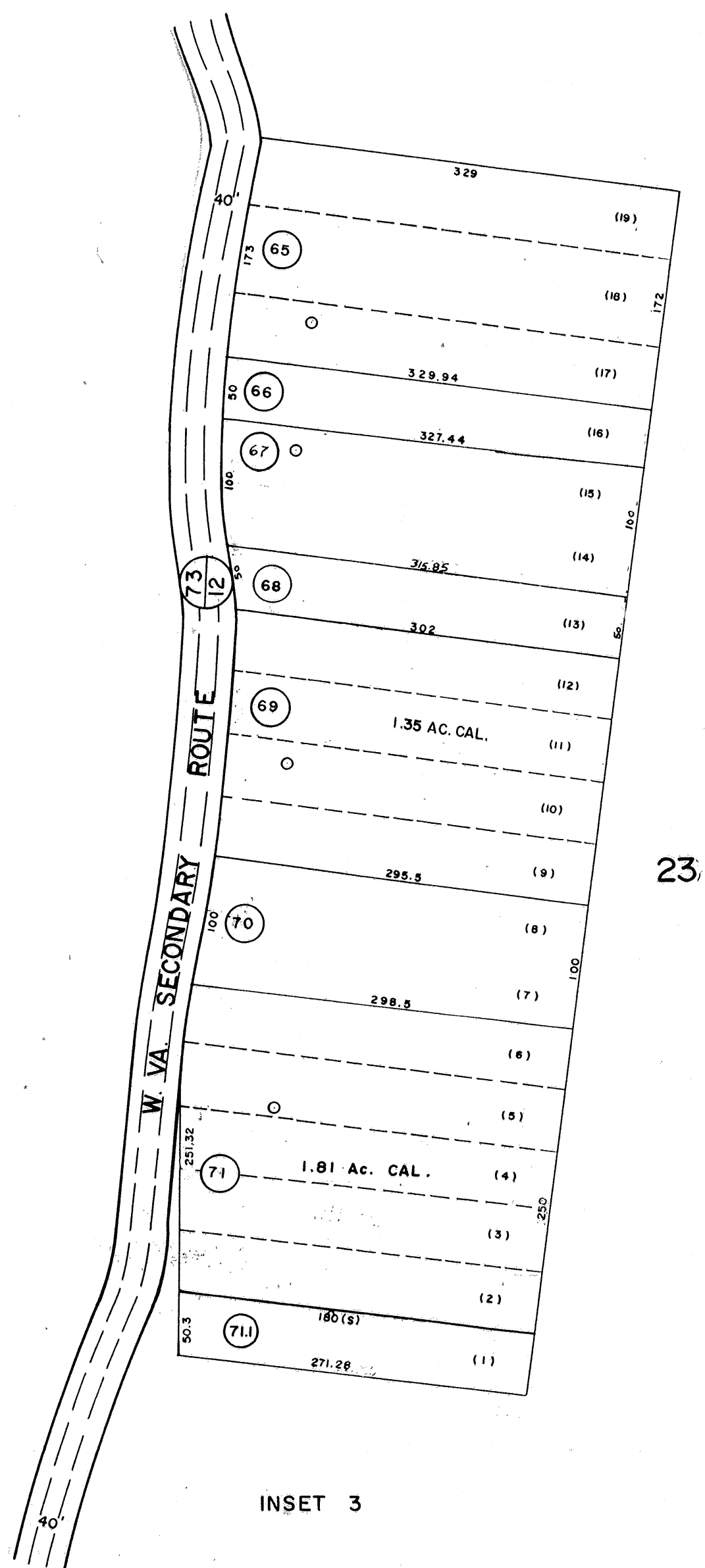
Property line	—	Original lot line	—
Right of way line	—	Deed lot number (in parenthesis)	(15)
Edge of pavement or roadway	—	Parcel or index number (in circle)	⊙
Corporation line	—	Improvement	⊖
District line	—	Railroad	—
County line	—	Scaled Dimension	5
Stream	—	Original block number	⊕
		CALCULATED AREA	CAL.

**Revisions**

1	1/73	5/22	ERM	9	O.G.I.S	9-1-96	J.E.B	17
2	FEB 74		PARM	10		7-1-97	J.E.B	18
3	MAR 75		JC	11		1-1-99	J.E.B	19
4	2/77		SLR	12	2-21-2000	J.A.B.		20
5	Revised to 7-1-82			13	5-9-06	J.A.B.		21
6	Revised to 7-1-85			14				22
7	Revised to 7-1-87			15				23
8	Revised to 7-1-87		RJS	16				24

**KANAWHA COUNTY**  
 Office of Assessor  
 CHARLESTON, WEST VIRGINIA

MALDEN DISTRICT - 23  
 Map No. 18E  
 Photo No. J25  
 Date, Photography: April, May 1964  
 Scale: 1" = 100'  
 Date, Map: 3-31-66



23-18

23-18

