

23-17

23-17

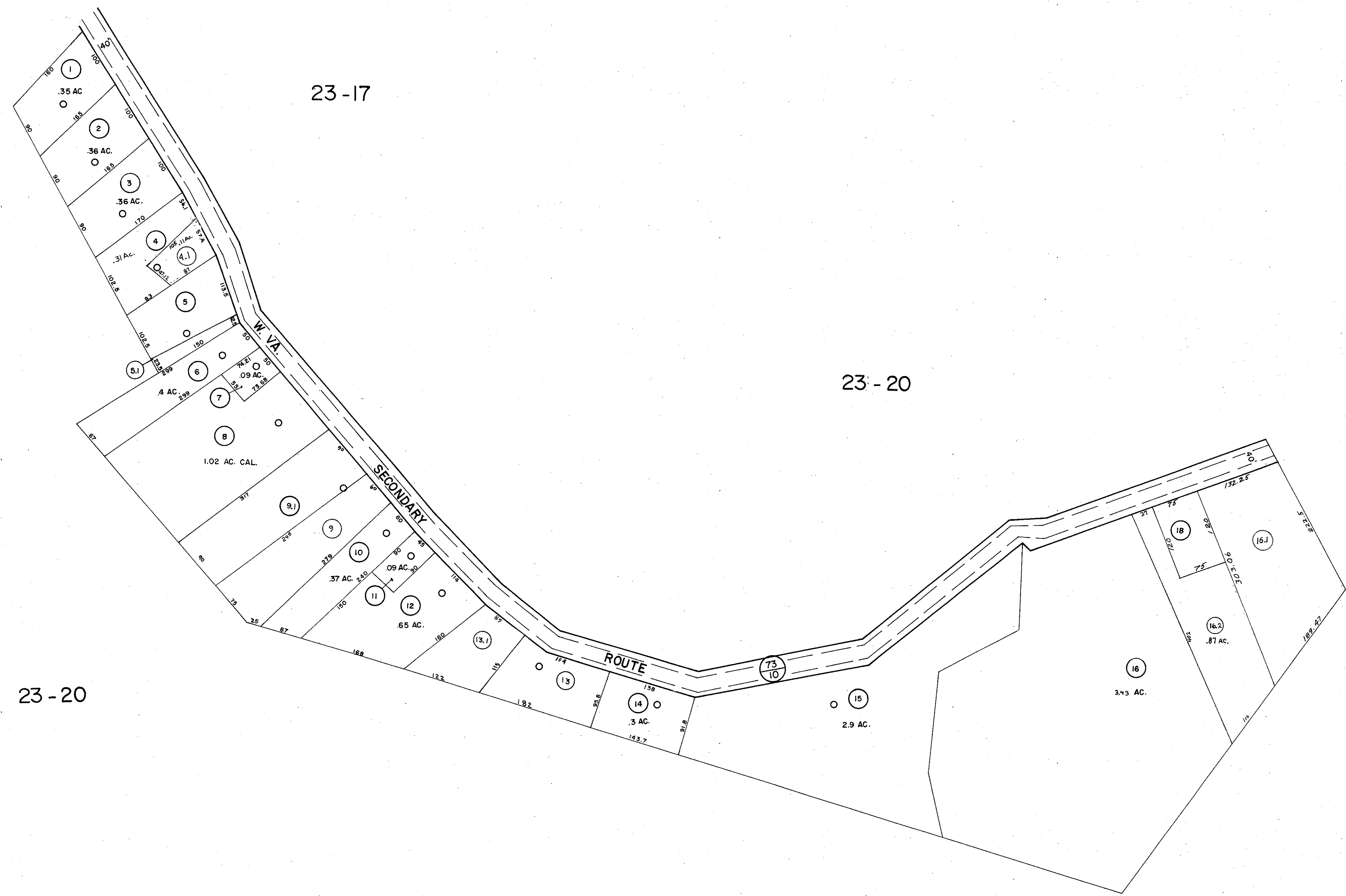
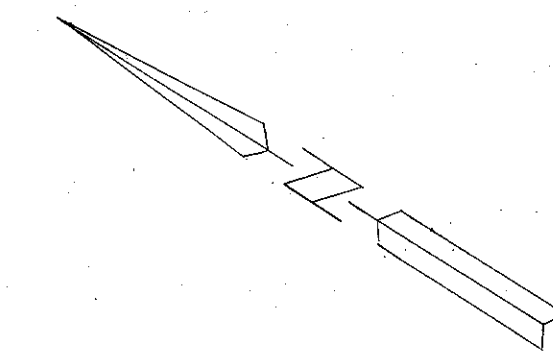
23-17

23-20

23-20

23-20

23-20



DRAFTED BY: *BM* CHECKED BY: *ES*

FOR TAX PURPOSES ONLY

PREPARED BY

**AERO SERVICE CORPORATION**  
A DIVISION OF LITTON INDUSTRIES  
210 E. COURTLAND ST. PHILADELPHIA, PA. 19120



**AMERICAN AIR SURVEYS, INC.**  
907 PENN AVENUE, PITTSBURGH 22, PA.  
NEW YORK ATLANTA

**Legend**

Property line	—	Original lot line	—
Right of way line	—	Deed lot number (in parenthesis)	(15)
Edge of pavement or roadway	—	Parcel or index number (in circle)	⊙
Corporation line	—	Improvement	—
District line	—	Railroad	—
County line	—	Scaled Dimension	S
Stream	—	Original block number	⊙
		CALCULATED AREA	CAL.

**Revisions**

1	FEB 74 PAMA	9	17
2	11/6/75 JC	10	18
3	2/6/79 SLR	11	19
4	Revised to 7-1-82 SF	12	20
5	Revised to 7-1-85 SF	13	21
6	Revised to 7-1-87 SF	14	22
7	7-1-97 J.E.B	15	23
8		16	24

**KANAWHA COUNTY**  
Office of Assessor  
CHARLESTON, WEST VIRGINIA

MALDEN DISTRICT - 23  
Map No. 20A

Photo No.: 125 Scale: 1" = 100'  
Date, Photography: April, May 1964 Date, Map: 3-31-66