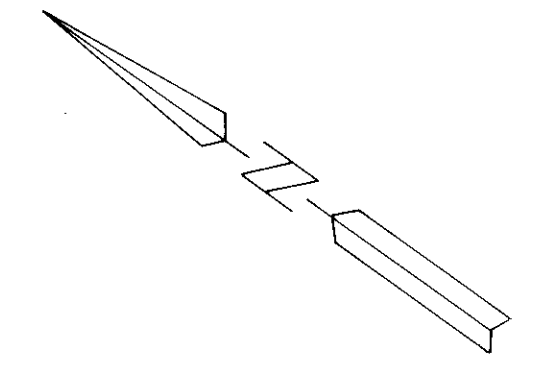
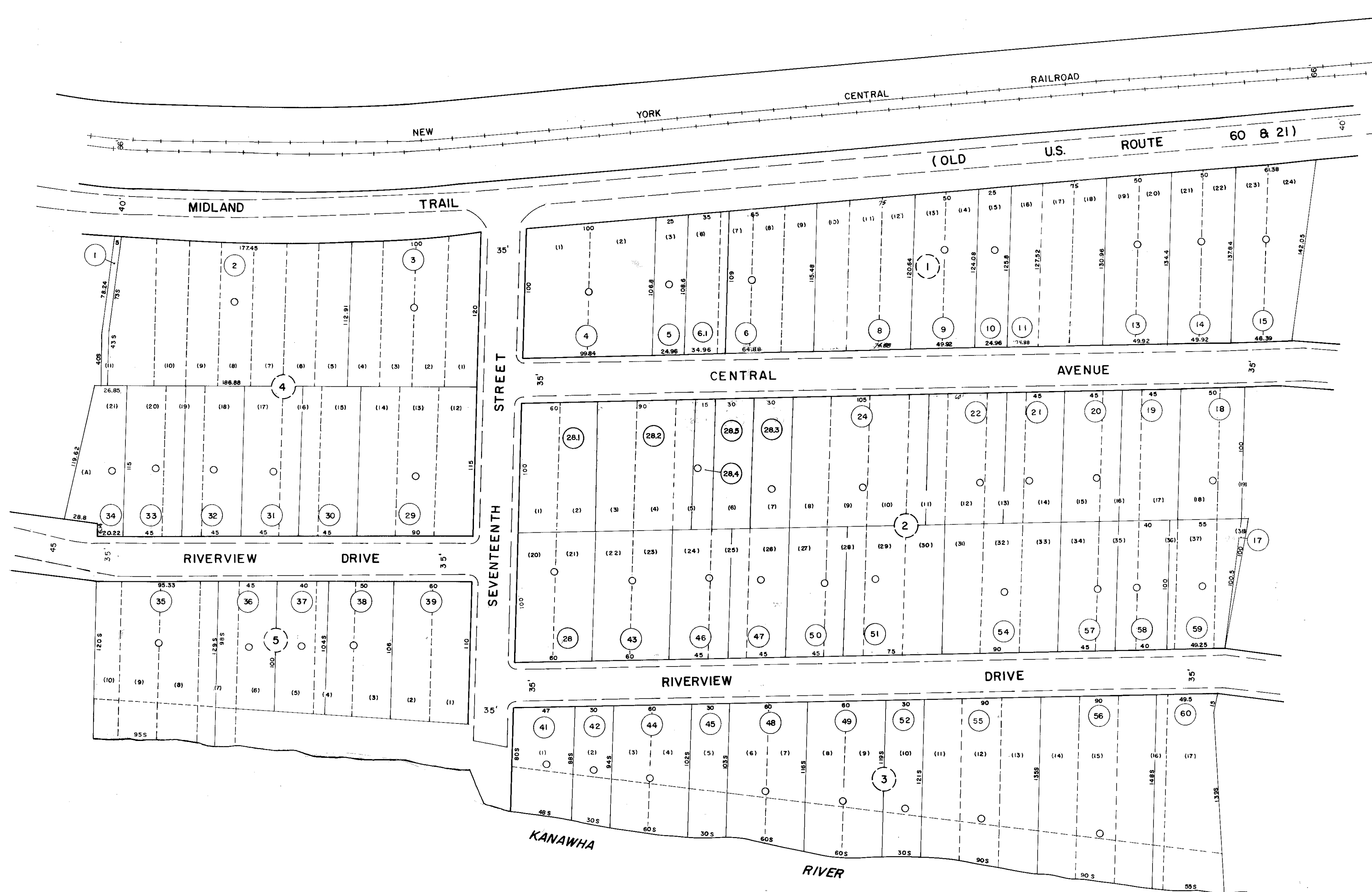


23 - 30



23-30B

23-30D



23 - 30

DRAFTED BY: S.M.  
CHECKED BY: E.S.

NOTE:  
PARCEL NO. 16 NOT USED

FOR TAX PURPOSES ONLY

PREPARED BY

**AERO SERVICE CORPORATION**  
A DIVISION OF LITTON INDUSTRIES  
210 E. COURTLAND ST. PHILADELPHIA, PA. 19120



**AMERICAN AIR SURVEYS, INC.**  
907 PENN AVENUE, PITTSBURGH 22, PA.  
NEW YORK ATLANTA

**Legend**

Property line	Original lot line
Right of way line	Deed lot number (in parenthesis)
Edge of pavement or roadway	Parcel or index number (in circle)
Corporation line	Improvement
District line	Railroad
County line	Scaled Dimension
Stream	Original block number
	CALCULATED AREA

**Revisions**

1	2/4/79	SLR	9
2	Revised to 7-1-82	JEB	10
3	Revised to 7-1-85	JEB	11
4	Revised to 7-1-87	JEB	12
5	Revised to 7-1-89	SAJ	13
6	OGIS 8/28/93	SAJ	14
7	7-1-97	JEB	15
8	1-1-99	JEB	16
9			17
10			18
11			19
12			20
13			21
14			22
15			23
16			24

**KANAWHA COUNTY**  
Office of Assessor  
CHARLESTON, WEST VIRGINIA

MALDEN DISTRICT - 23

Map No. 30C

Photo No.: 435

Scale: 1"=50'

Date, Photography: April, May 1964

Date, Map: 3-31-66