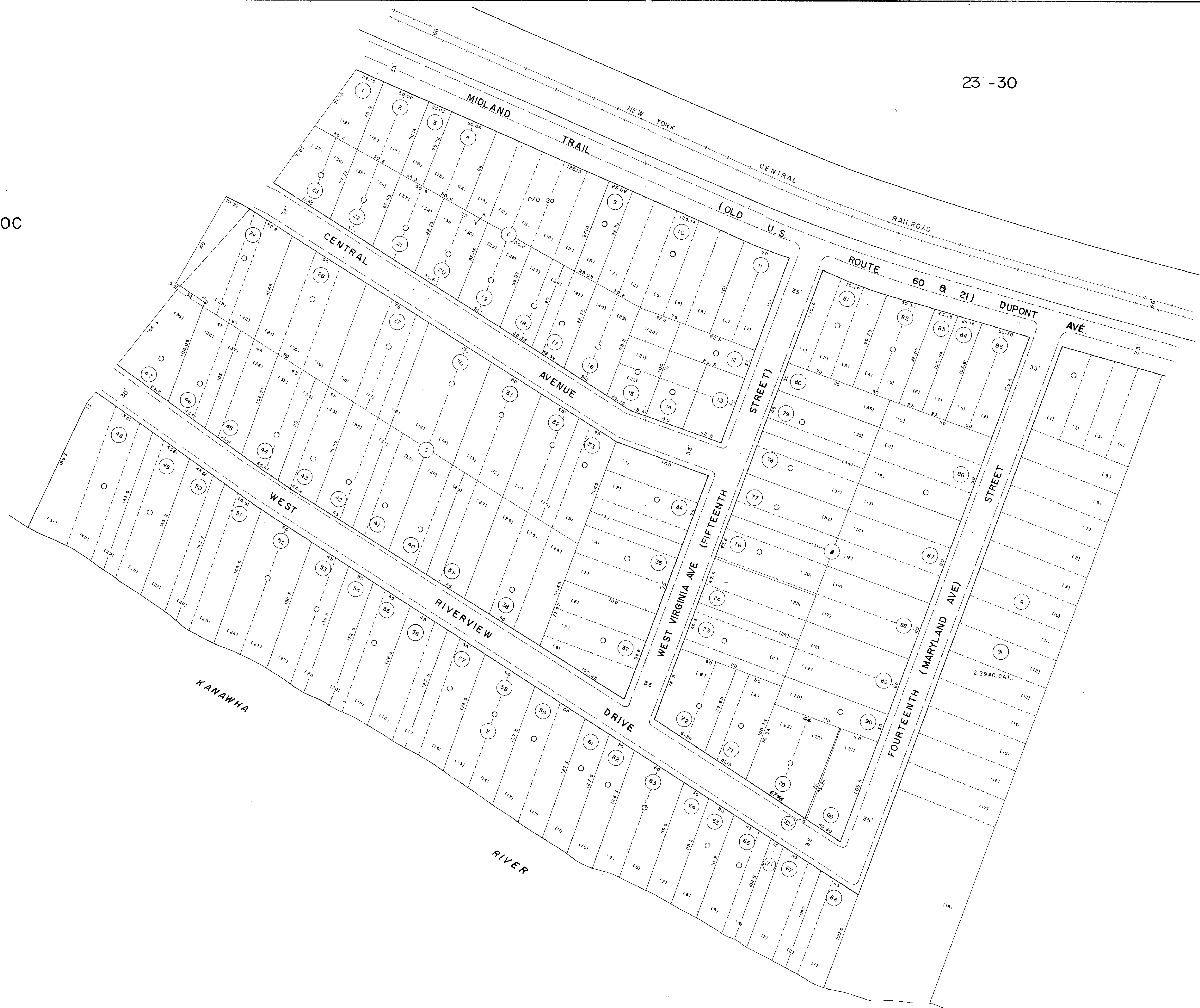
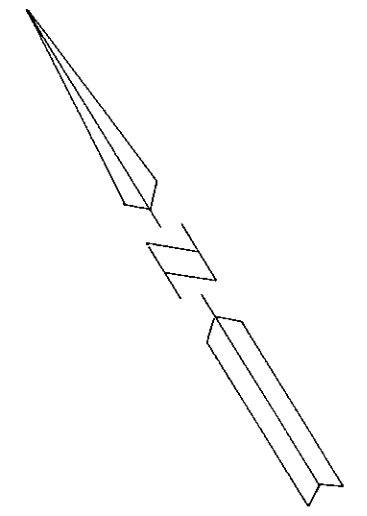


23 -30

23 -30C

23-30



DRAFTED BY: G.T.

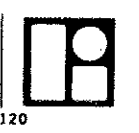
CHECKED BY: ES

NOTE: PARCEL NUMBER 25, 28 NOT USED

FOR TAX PURPOSES ONLY

PREPARED BY

**AERO SERVICE CORPORATION**  
A DIVISION OF LITTON INDUSTRIES  
210 E. COURTLAND ST. PHILADELPHIA, PA. 19120



**AMERICAN AIR SURVEYS, INC.**  
907 PENN AVENUE, PITTSBURGH 22, PA.  
NEW YORK ATLANTA

**Legend**

Property line	Original lot line	(15)
Right of way line	Dead lot number (in parenthesis)	(16)
Edge of pavement or roadway	Parcel or index number (in circle)	(17)
Corporation line	Improvement	(18)
District line	Railroad	(19)
County line	Scaled Dimension	(20)
Stream	Original block number	(21)
	CALCULATED AREA	(22)

**Revisions**

1	DAVIS FEB 74 P&M	9	3-9-2000 J.A.B.	17
2	11-6-75 T.G.	10		18
3	Revised to 7-1-82	11		19
4	Revised to 7-1-85	12		20
5	Revised to 7-1-87	13		21
6	O.G.I.S. 9-1-96 J.E.B.	14		22
7	7-1-97 J.E.B.	15		23
8	1-1-99 J.E.B.	16		24

**KANAWHA COUNTY**

Office of Assessor

CHARLESTON, WEST VIRGINIA

MALDEN DISTRICT - 23

Map No. 30D

Photo No.: 435

Date, Photography: April, May 1964

Scale: 1" = 50'

Date, Map: 3-31-66