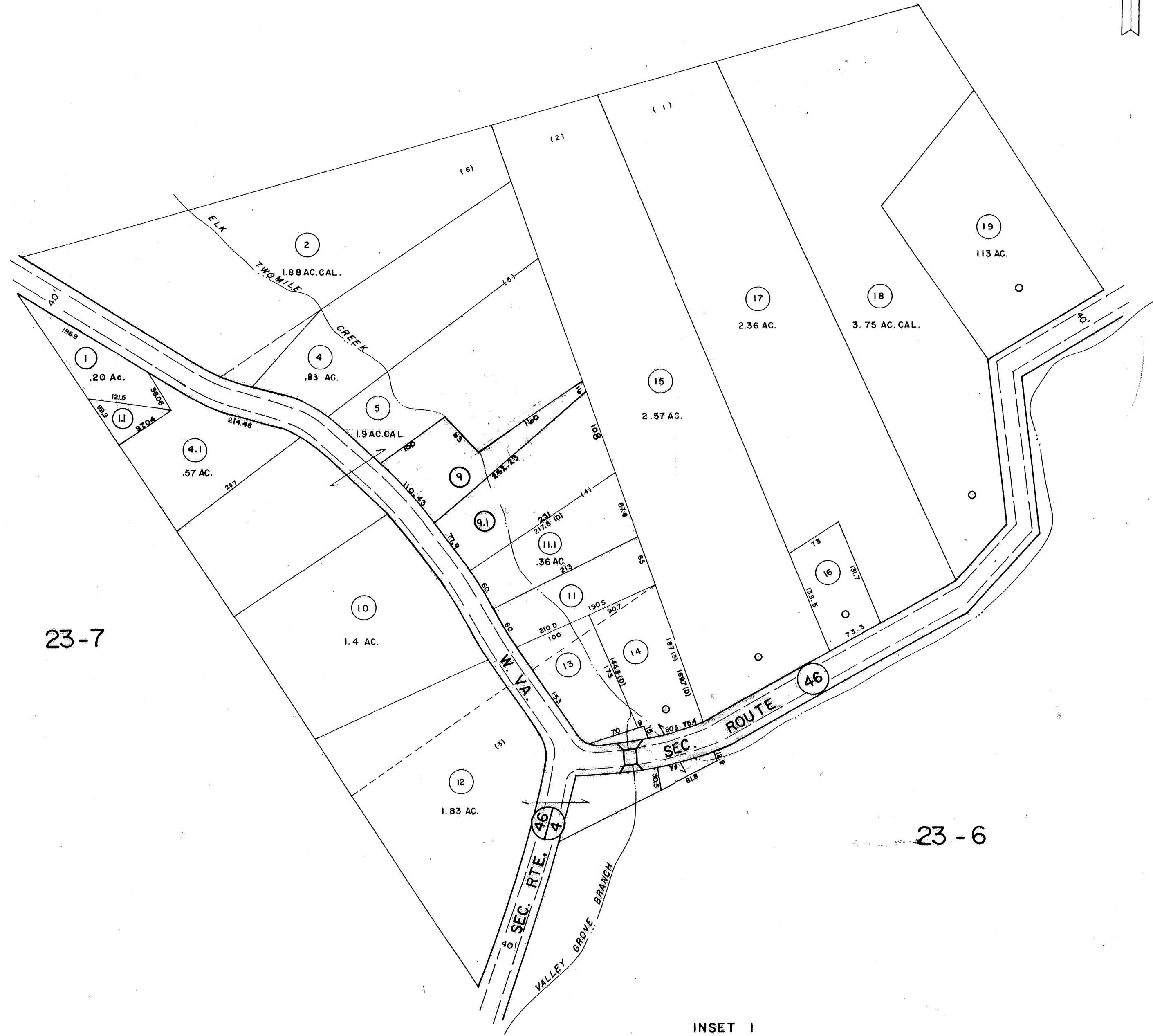


23-2

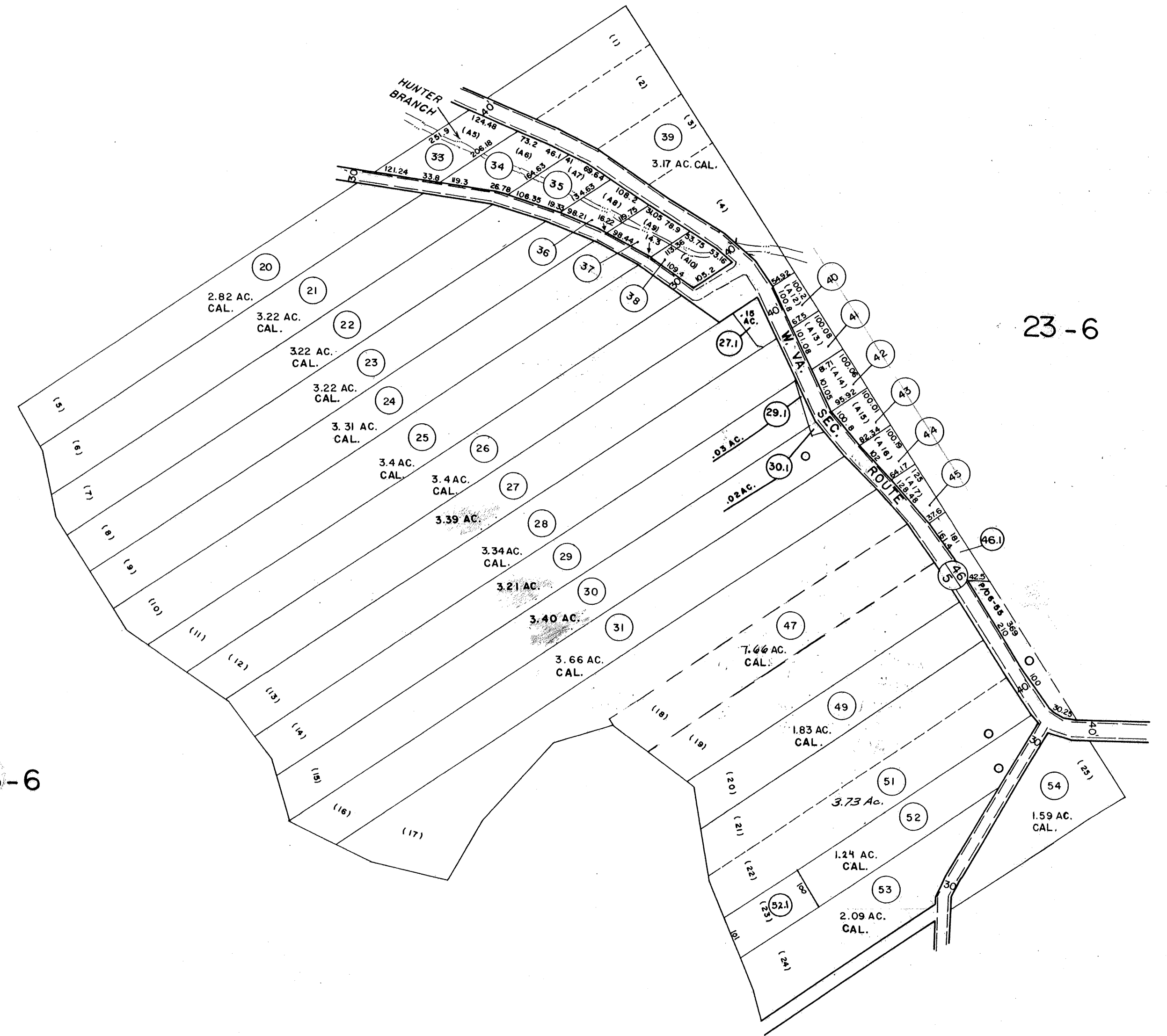
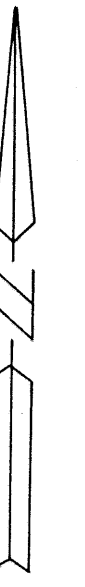


23-7

23-6

INSET 1
SCALE: 1" = 100'

23-6



23-6

23-6

23-6

INSET 2
SCALE: 1" = 200'

DRAFTED BY: C.F.
CHECKED BY: E.S.

FOR TAX PURPOSES ONLY

PREPARED BY

AERO SERVICE
CORPORATION
A DIVISION OF LITTON INDUSTRIES
210 E. COURTLAND ST., PHILADELPHIA, PA. 19120

AMERICAN AIR SURVEYS, INC.
907 PENN AVENUE, PITTSBURGH 22, PA.
NEW YORK ATLANTA

Legend

Property line	---	Original lot line	---
Right of way line	====	Deed lot number (in parenthesis)	(15)
Edge of pavement or roadway	----	Parcel or index number (in circle)	⊙
Corporation line	----	Improvement	▭
District line	----	Railroad	—+—
County line	----	Scaled Dimension	S
Stream	~~~~	Original block number	⊕
		CALCULATED AREA	CAL.

Revisions

1	2/1/74	JC	9	1-1-99	J.E.B.	17
2	2/8/75	SLR	10	5-2-06	J.A.B.	18
3	Revised 7-1-87	SAJ	11			19
4	Revised 7-1-87	SAJ	12			20
5	REV. TO 7-1-87	NCS	13			21
6	REV. TO 7-1-89	R.E.B.	14			22
7	OGIS 8/24/93	SAJ	15			23
8	7-1-97	J.E.B.	16			24

KANAWHA COUNTY
Office of Assessor
CHARLESTON, WEST VIRGINIA

MALDEN DISTRICT - 23

Map No. 6 A

Photo No.: 494 Scale: AS SHOWN

Date, Photography: April, May 1964 Date, Map: 3-31-66