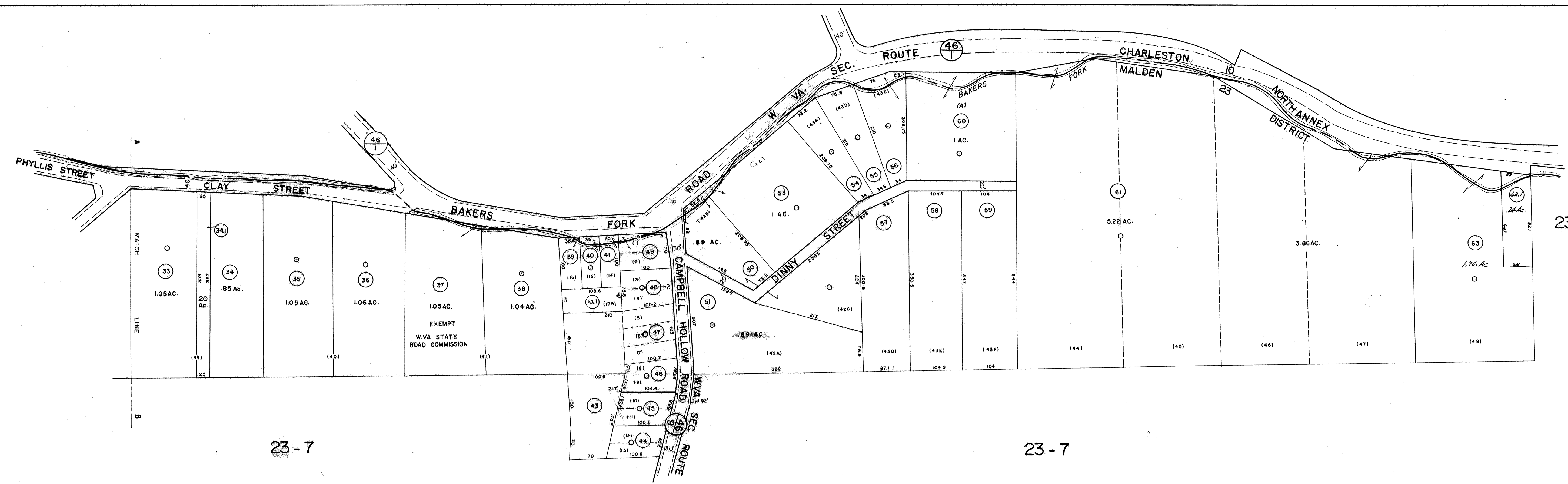


CLAYFIELD ACRES

23-9



23-7

23-7

23-7

DRAFTED BY: *H.R.*
 CHECKED BY: *E.S.*

FOR TAX PURPOSES ONLY

PREPARED BY
AERO SERVICE CORPORATION
 A DIVISION OF LITTON INDUSTRIES
 216 E. COURTLAND ST., PHILADELPHIA, PA. 19120

AMERICAN AIR SURVEYS, INC.
 907 PENN AVENUE, PITTSBURGH 22, PA.
 NEW YORK ATLANTA

Legend

Property line	—	Original lot line	—
Right of way line	—	Deed lot number (in parenthesis)	(15)
Edge of pavement or roadway	—	Parcel or index number (in circle)	○
Corporation line	—	Improvement	—
District line	—	Railroad	—
County line	—	Scaled Dimension	—
Stream	—	Original block number	—
		CALCULATED AREA	—

Revisions

1	2/1/74 RAS	J.C.	9	1-1-99 J.E.B.	17
2	11/1/75	J.C.	10	2-16-2000 J.A.B.	18
3	2/8/78	SLR	11	5-4-06 J.A.B.	19
4	Revised 6-7-82		12		20
5	Revised 12-7-85		13		21
6	Revised 12-7-87	REB	14		22
7	OGIS 8/24/93	SAJ	15		23
8	7-1-97	J.E.B.	16		24

KANAWHA COUNTY
 Office of Assessor
 CHARLESTON, WEST VIRGINIA

MALDEN DISTRICT-23
 Map No. 7B

Photo No.: 496
 Date, Photography: April, May 1964
 Scale: 1" = 100'
 Date, Map: 3-31-66