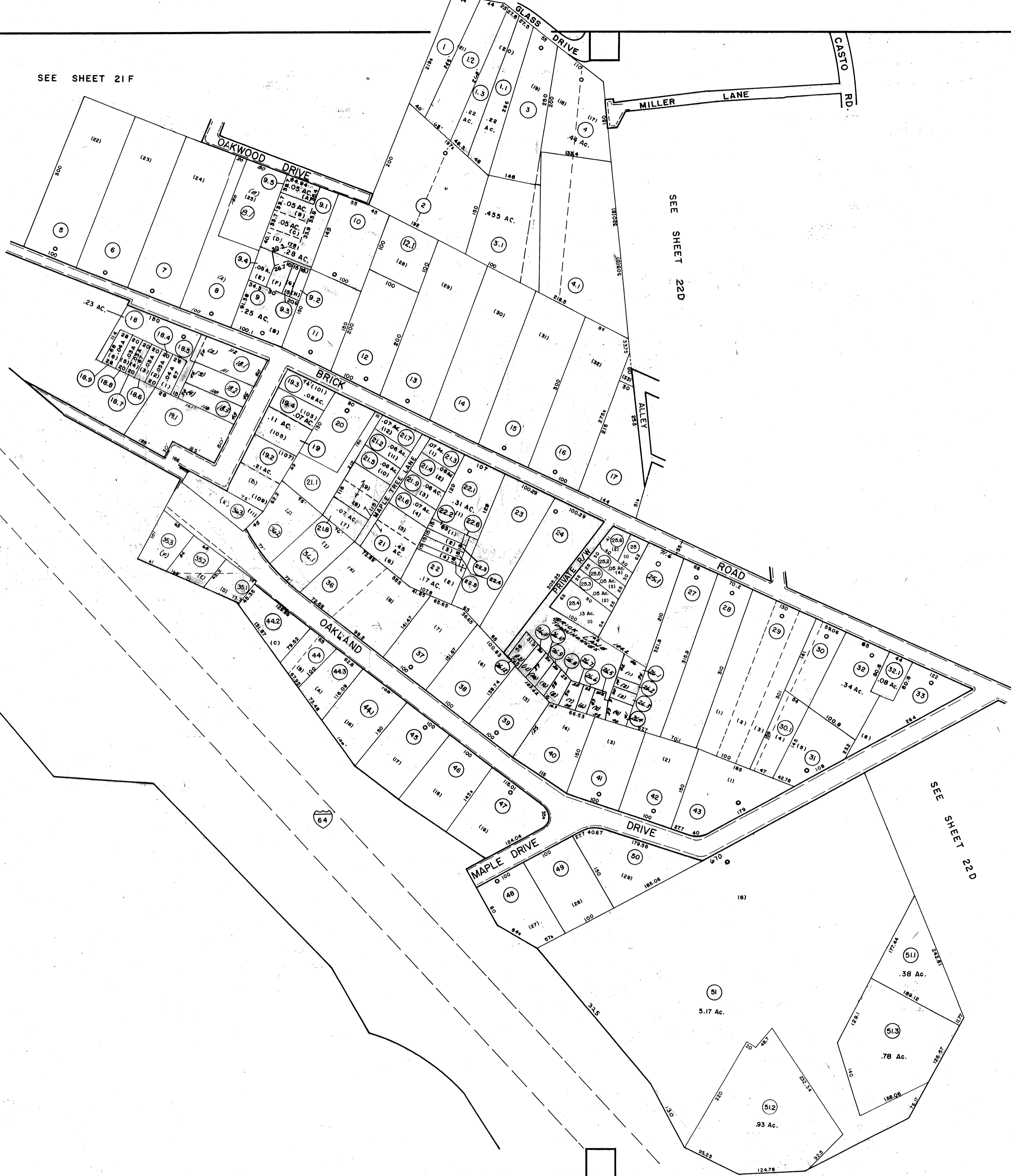


SEE SHEET 21 F

SEE SHEET 22 D

SEE SHEET 22 D

SEE 21



FOR TAX PURPOSES ONLY

PREPARED BY

**AERO SERVICE CORPORATION**  
 A DIVISION OF LITTON INDUSTRIES  
 210 E. COURTLAND ST., PHILADELPHIA, PA. 19120



**AMERICAN AIR SURVEYS, INC.**  
 907 PENN AVENUE, PITTSBURGH 22, PA.  
 NEW YORK ATLANTA

**Legend**

Property line	—	Original lot line	—
Right of way line	—	Dead lot number (in parenthesis)	(12)
Edge of pavement or roadway	—	Parcel or index number (in circle)	99
Corporation line	—	Improvement	—
District line	—	Railroad	—
County line	—	Scaled Dimension	5
Stream	—	Original block number	22

**Revisions**

1	1-28 AUG-72 J.J.M.	9	Revised to 7-1-85	17	4-25-2000 J.A.B.
2	8-3-75 M.C.H.	10	July 1987	18	5-2-01 J.A.B.
3	8-23-73 M.L.	11	REV. TO 7-1-89	19	J.A.B. 8-18-04
4	NOV 74 P.A.M.	12	OGIS 7-1-91	20	7-26-06 J.A.B.
5	HORNBACH DEC 75	13	O.G.I.S 10-28-93	21	
6	5-12-77 D.H.	14	O.G.I.S 11-11-96	22	
7	2-5-79 CLINT	15	8-1-97	23	
8	Revised to 7-1-85	16	1-1-99	24	

**KANAWHA COUNTY**

Office of Assessor

CHARLESTON, WEST VIRGINIA

**UNION DISTRICT**

Map No. 21 G

Photo No. 29-292,293

Scale: 1" = 100'

Date, Photography: April, May, 1964

Date, Map: 4-1-66

