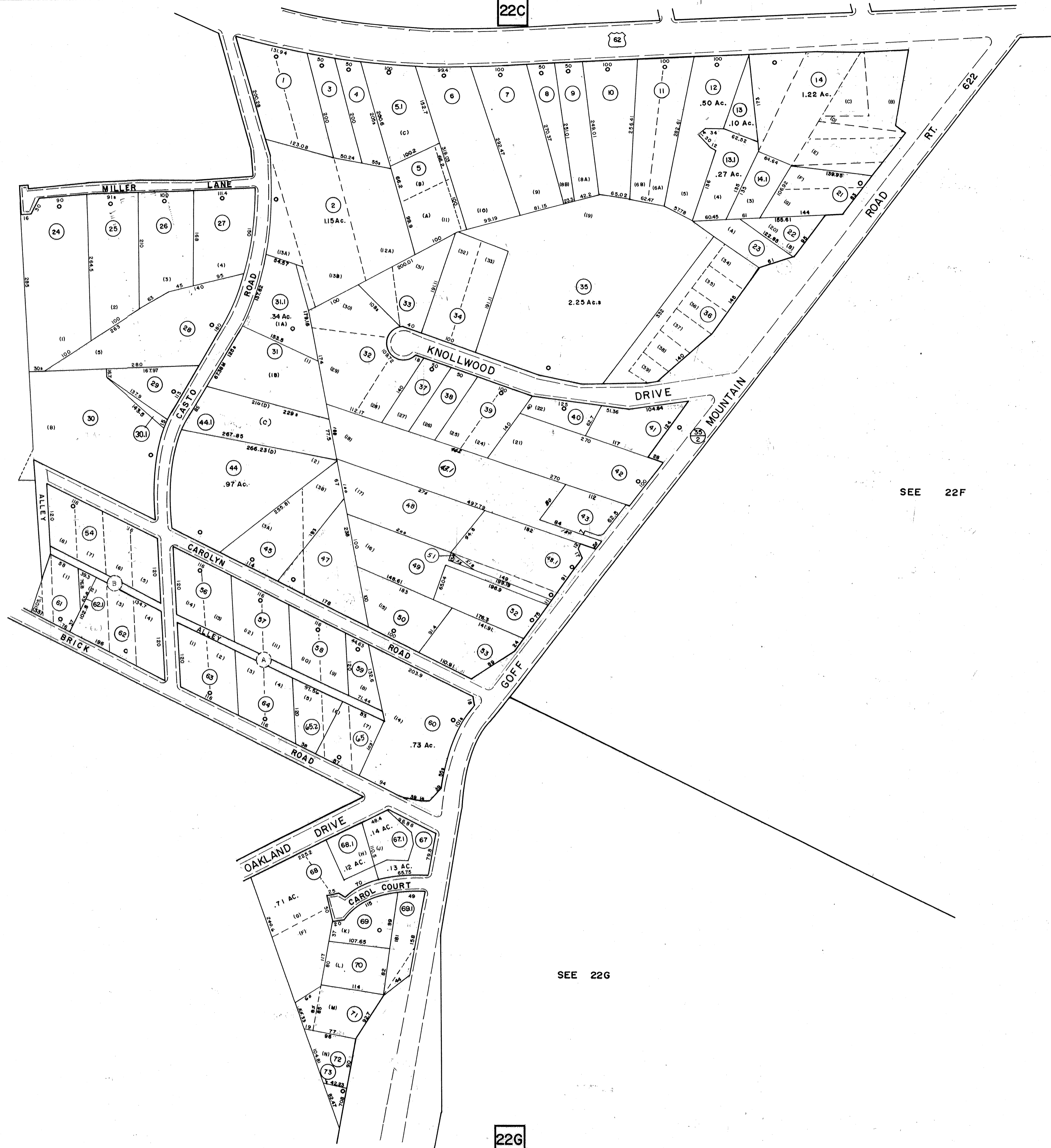


22C

SEE 22E



SEE 22F

SEE 22G

22G

21G

22F

FOR TAX PURPOSES ONLY

PREPARED BY

AERO SERVICE CORPORATION
A DIVISION OF LITTON INDUSTRIES
210 E. COURTLAND ST., PHILADELPHIA, PA. 19102



AMERICAN AIR SURVEYS, INC.
907 PENN AVENUE, PITTSBURGH 22, PA.
NEW YORK ATLANTA

Legend

Property line	—	Original lot line	—
Right of way line	—	Deed lot number (in parenthesis)	(15)
Edge of pavement or roadway	—	Parcel or index number (in circle)	99
Corporation line	—	Improvement	—
District line	—	Railroad	—
County line	—	Scaled Dimension	5
Stream	—	Original block number	22

Revisions

1	8/29/72	JWP	7	REV. TO 7-1-89	NCS	17
2	8/3/73	D.H.	10	OGIS 7-1-91	TL	18
3	5-13-77	D.H.	11	O.G.I.S 10-28-93	J.E.B.	19
4	Feb. 79	JWP	12	O.G.I.S 6-13-95	J.E.B.	20
5	Revised 7-1-82	JWP	13	O.G.I.S 11-11-92	J.E.B.	21
6	Revised 7-1-85	JWP	14	8-1-97	J.E.B.	22
7	July, 1987	TRL	15	1-1-99	J.E.B.	23
8			16	8-19-04	J.A.B.	24

KANAWHA COUNTY

Office of Assessor

CHARLESTON, WEST VIRGINIA

UNION DISTRICT

Map No. 22D

Photo No. 28-276,277, 29-292,293

Scale: 1" = 100'

Date, Photography: April, May, 1964

Date, Map: 4-1-66