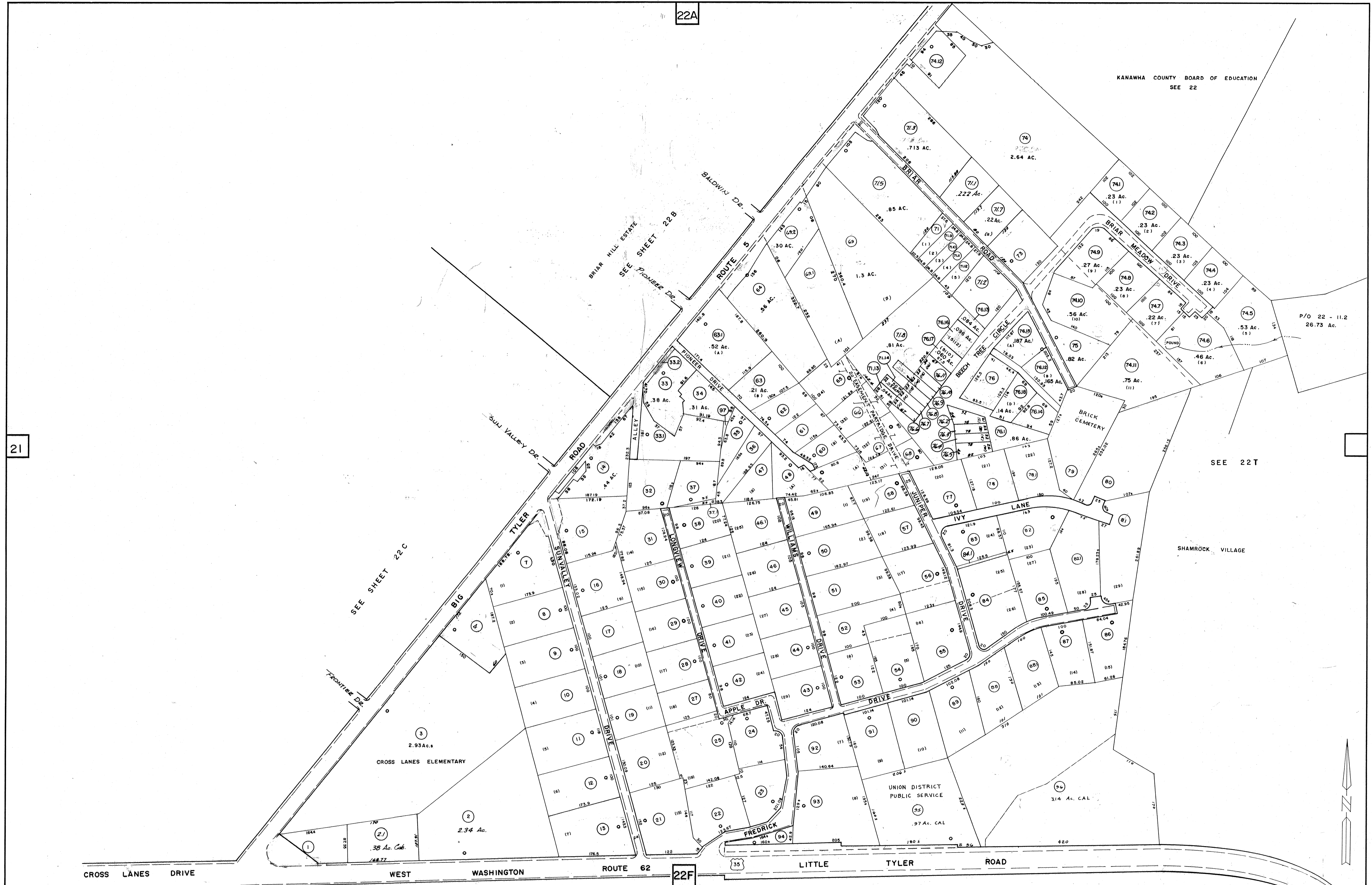


KANAWHA COUNTY BOARD OF EDUCATION  
SEE 22



FOR TAX PURPOSES ONLY

PREPARED BY

**AERO SERVICE CORPORATION**  
A DIVISION OF LITTON INDUSTRIES  
210 E. COURTLAND ST., PHILADELPHIA, PA. 19120



**AMERICAN AIR SURVEYS, INC.**  
907 PENN AVENUE, PITTSBURGH 22, PA.  
NEW YORK ATLANTA

**Legend**

Property Line	—	Original lot line	—
Right of way line	—	Deed lot number (in parenthesis)	(12)
Edge of pavement or roadway	—	Parcel or index number (in circle)	(9)
Corporation line	—	Improvement	—
District line	—	Railroad	—
County line	—	Scaled Dimension	—
Stream	—	Original block number	(22)

**Revisions**

1	8/25/72	J.R.P.	1	1-1-99	J.E.B.	17
2	8/25/73	MARSHALL	10	4-26-2000	J.A.B.	18
3	FEB-74		11	5-2-01	J.A.B.	19
4	REVISION 7-1-82		12	9-3-04	J.A.B.	20
5	REVISION 7-1-85		13	7-26-08	J.A.B.	21
6	JULY 1987	TR	14			22
7	O.G.I.S. 11-11-96	J.E.B.	15			23
8	8-1-97	J.E.B.	16			24

**KANAWHA COUNTY**  
Office of Assessor  
**CHARLESTON, WEST VIRGINIA**

**UNION DISTRICT**  
Map No. 22E

Photo No. 28-277,278,279  
Date, Photography: April, May, 1964  
Scale: 1" = 100'  
Date, Map: 4-1-66