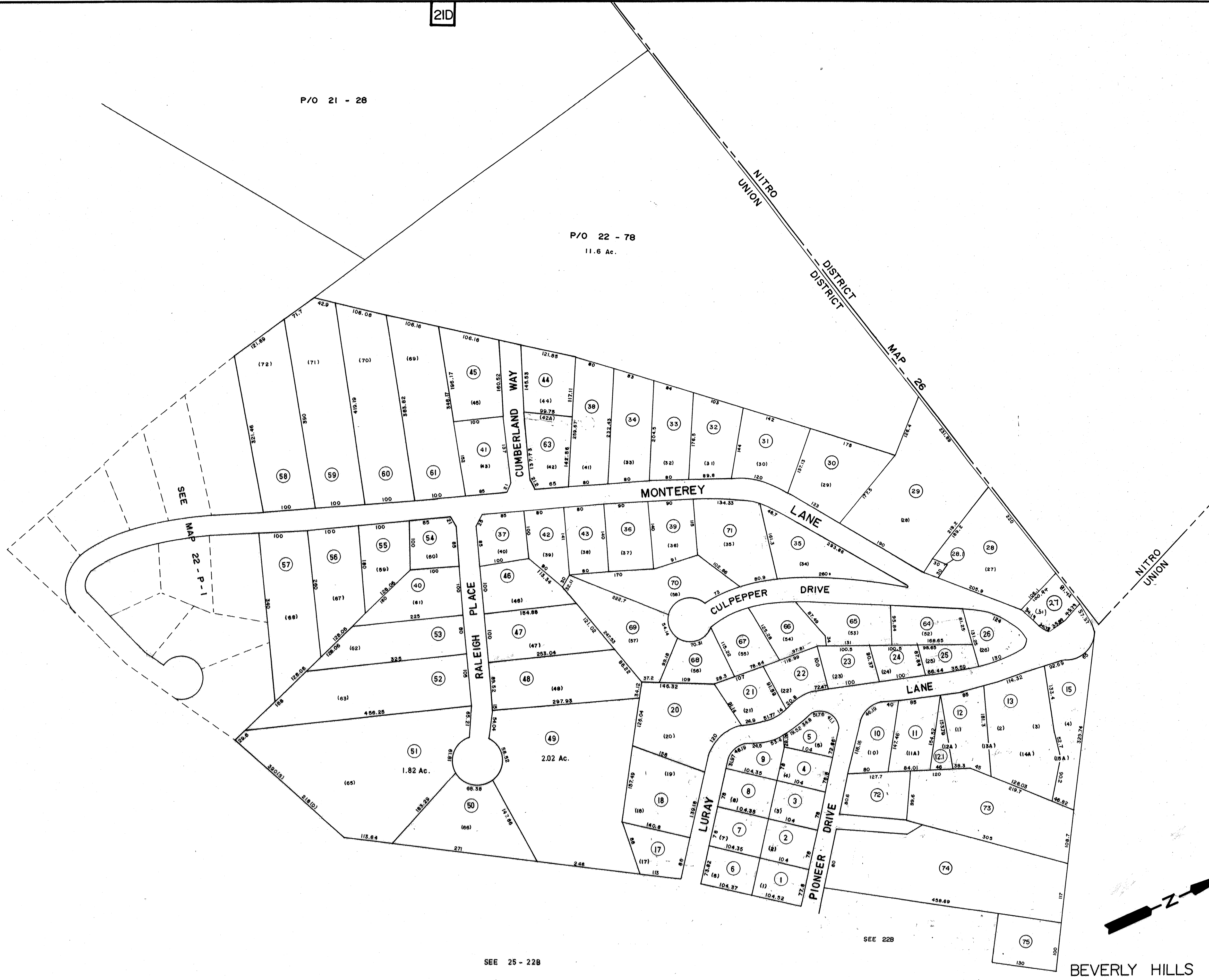


P/O 21 - 28

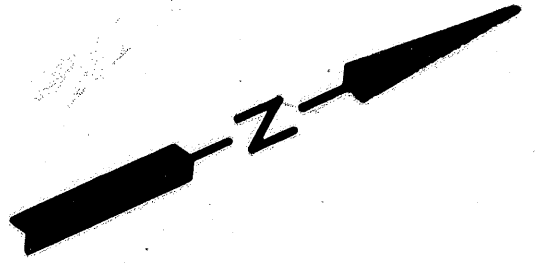
P/O 22 - 78
11.6 Ac.



SEE 25 - 22B

SEE 22B

BEVERLY HILLS



LEGEND

| | | | |
|-----------------------------|---|------------------------|--------|
| Property line | — | Original lot line | — (15) |
| Edge of pavement or roadway | — | Deed lot number | ⊙ |
| Corporation line | — | Parcel or index number | ⊙ |
| District line | — | Improvement | ⊙ |
| County line | — | Railroad | — |

REVISIONS

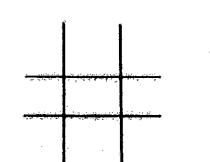
| | | |
|---|------------------|--------|
| 1 | Feb. 79 | Client |
| 2 | Rev. 7-1-82 | J.E.B. |
| 3 | Rev. 7-1-85 | J.E.B. |
| 4 | July, 1987 | TRL |
| 5 | 7-1-89 | TRL |
| 6 | OGIS 7-1-91 | TL |
| 7 | O.G.I.S 10-28-93 | J.E.B. |
| 8 | 8-1-97 | J.E.B. |

8-23-04 J.A.B.

RESTRICTION

All tax maps created under the provisions of reappraisal legislation are the property of the State of West Virginia and the reproduction, copying, distribution or sale of such tax maps or any copies thereof without the written permission of the State Tax Commissioner is prohibited by law.

KEY MAP



For Tax Purposes Only

Prepared by
LOCAL GOVERNMENT RELATIONS DIV.
STATE TAX COMMISSIONER
CHARLESTON, W.VA.

KANAWHA COUNTY
OFFICE OF ASSESSOR
CHARLESTON, WEST VIRGINIA

UNION DISTRICT
MAP NO. 22 U

Date, Aerial Photography:
Photo No:

Date, Map:
Scale: 1" = 100'