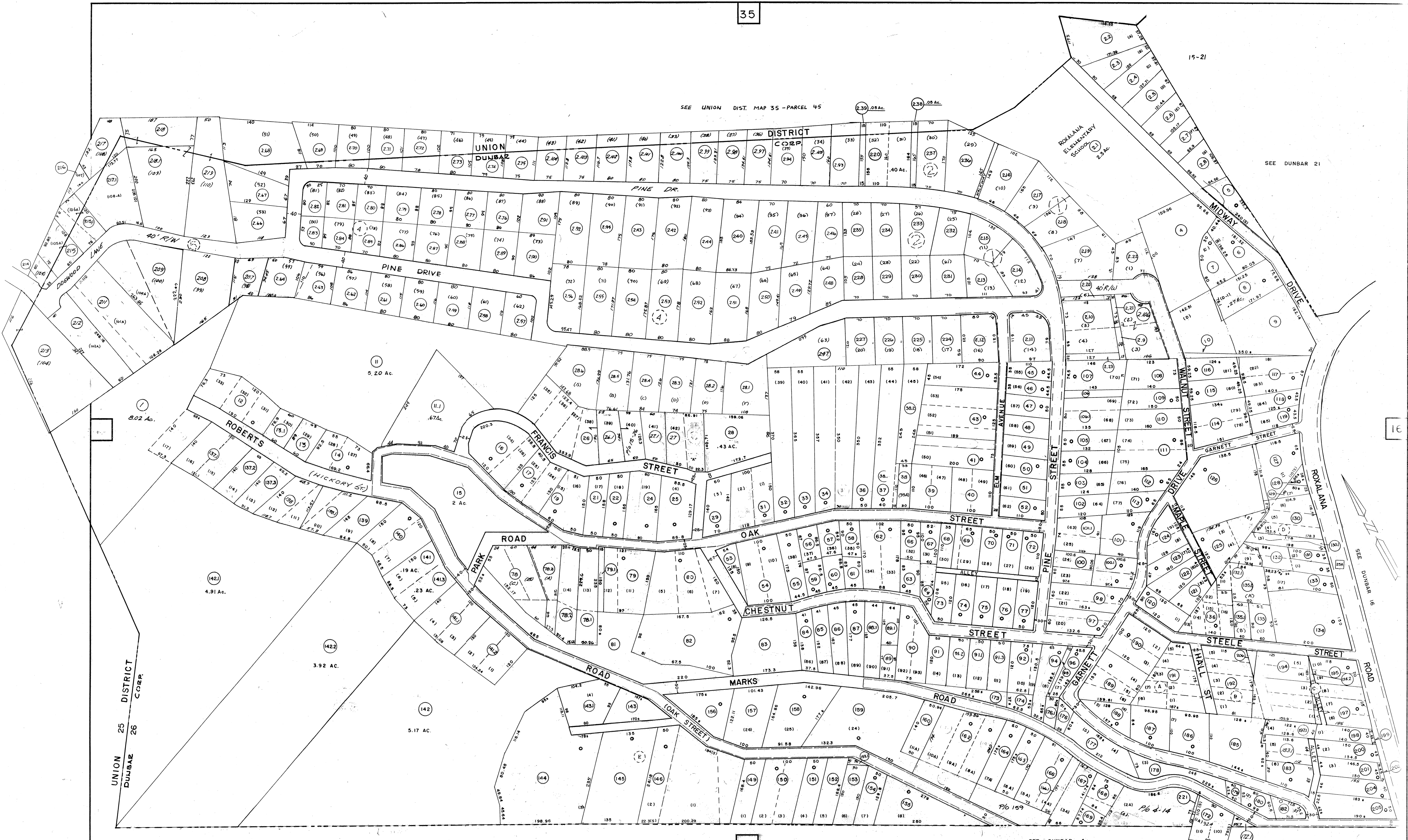


SEE UNION DIST. MAP 35 - PARCEL 45

SEE DUNBAR 21



SEE DUNBAR 2

SEE DUNBAR 4

FOR TAX PURPOSES ONLY

PREPARED BY

**AERO SERVICE CORPORATION**  
A DIVISION OF LITTON INDUSTRIES  
210 E. COURTLAND ST., PHILADELPHIA, PA. 19120



**AMERICAN AIR SURVEYS, INC.**  
907 PENN AVENUE, PITTSBURGH 22, PA.  
NEW YORK ATLANTA

**Legend**

- Property line
- Right of way line
- Edge of pavement or roadway
- Corporation line
- District line
- County line
- Stream
- Original lot line
- Dead lot number (in parenthesis)
- Parcel or index number (in circle)
- Improvement
- Railroad
- Scaled Dimension
- Original block number

**Revisions**

No.	Description	Date	By
1	DELETED PARCEL 23	July, 1987	TRL
2	9-28-72	July, 1996	CGS
3	REMOVED 1/2 1/2 MARSHALL	O.G.I.S. 4-15-94	J.E.B.
4	CHANGE 8/1/74	O.G.I.S. 11-11-96	J.E.B.
5	5-24-76	D.S. 13	5-1-97
6	11-3-78	OG	1-1-99
7	REMOVED 71-85	2-21-2000	J.A.B.
8	REMOVED 71-85	4-24-01	J.A.B.

**KANAWHA COUNTY**

Office of Assessor  
CHARLESTON, WEST VIRGINIA

DUNBAR 26

Map No. 15

Photo No. 22-177-178-179 Scale: 1" = 100'

Date, Photography: April, May, 1964 Date, Map: 7-23-64