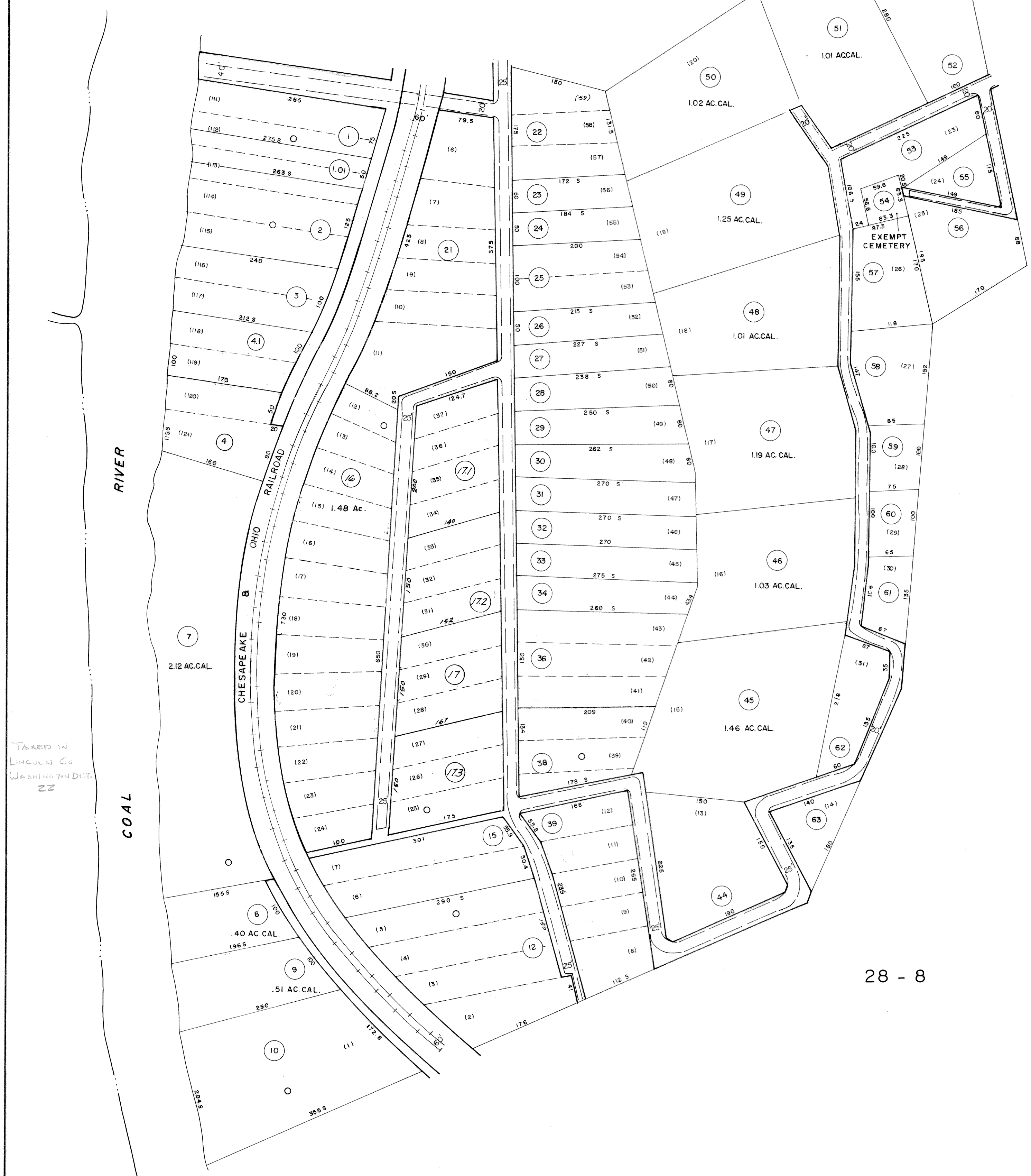
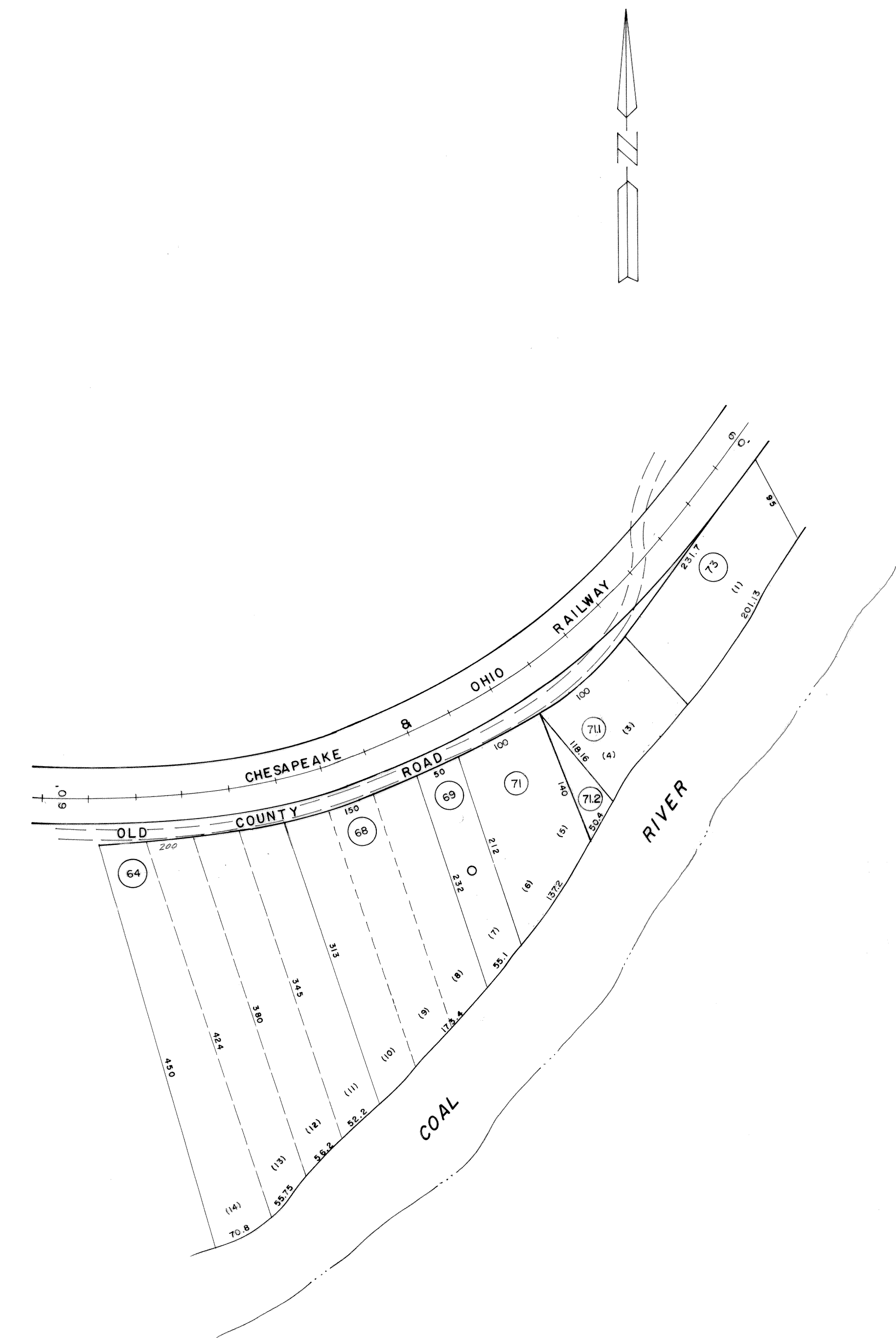


28 - 7F



28 - 8



TAKEN IN
LINCOLN CO.
WASHINGTON DIST.
27

DRAFTED BY: *EMM*
CHECKED BY: *ES*

NOTE:
PARCEL NUMBERS 18, 19, 20 NOT USED

FOR TAX PURPOSES ONLY

PREPARED BY
AERO SERVICE CORPORATION
CORPORATION
A DIVISION OF LITTON INDUSTRIES
210 E. COURTLAND ST. PHILADELPHIA PA 19120

AMERICAN AIR SURVEYS, INC.
907 PENN AVENUE, PITTSBURGH 22, PA.
NEW YORK ATLANTA

Legend

Property Line	Original lot line
Right of way line	Deed lot number (in parenthesis)
Edge of pavement or roadway	Parcel or index number (in circle)
Corporation line	Improvement
District line	Railroad
County line	Scaled Dimension
Stream	Original block number

Revisions

1	3/11/76	9	11-11-02 J.A.B.	17
2	Revised 7-1-82	10		18
3	Revised 7-1-85	11		19
4	O.G.I.S 8-20-91	12		20
5	O.G.I.S 9-1-93	13		21
6	O.G.I.S 9-1-96	14		22
7	11-1-97	15		23
8	2-22-2000 J.A.B.	16		24

KANAWHA COUNTY
Office of Assessor
CHARLESTON, WEST VIRGINIA

WASHINGTON DISTRICT - 28
Map No. 8 A

Photo No.: 160,162 Scale: 1"=100'
Date, Photography: April, May 1964 Date, Map: 12-31-65