

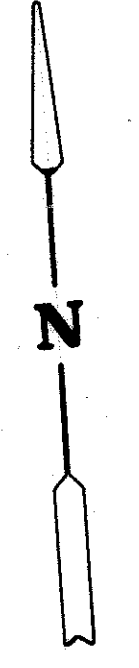
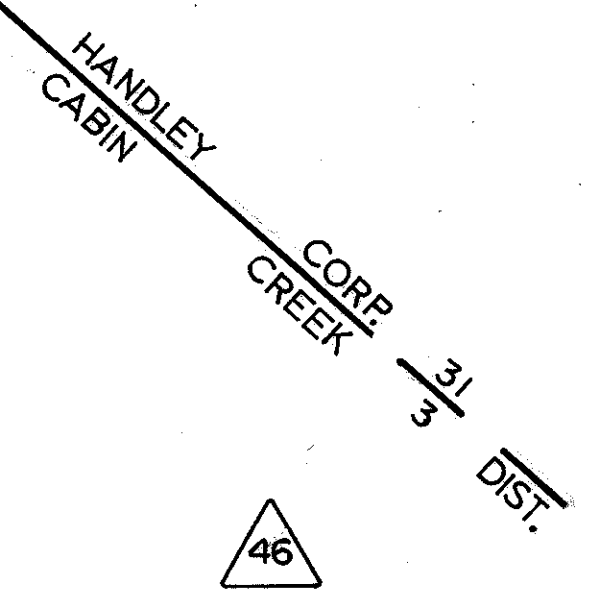
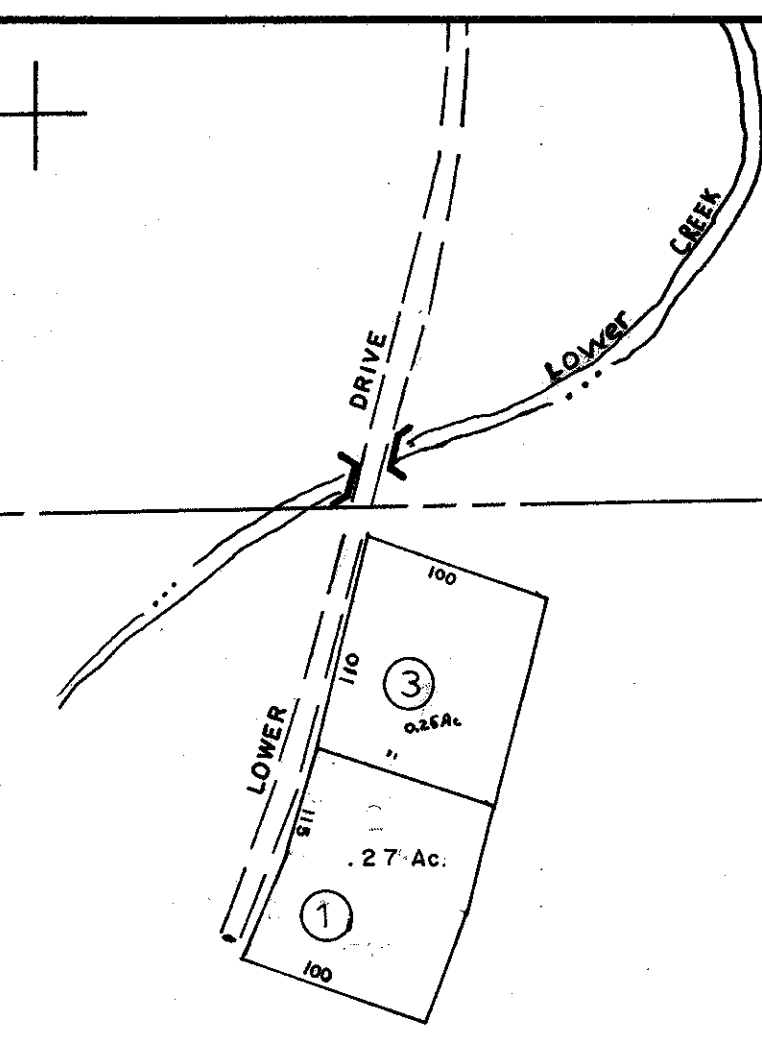
3

SEE HANDLEY MAP 3

SEE HANDLEY MAP 4

SEE HANDLEY MAP 5

2



For Tax Purposes Only
 Prepared by
 LOCAL GOVERNMENT RELATIONS DIV.
 STATE TAX COMMISSIONER
 CHARLESTON, W.VA.

LEGEND	
Property line	Original lot line
Edge of pavement or roadway	Deed lot number (15)
Corporation line	Parcel or index number
District line	Improvement
County line	Railroad

REVISIONS	
1	10-5-75 T.G.
2	Revised to 7-1-82
3	Revised to 7-1-85
4	Revised to 7-1-87
5	3-1-97 J.E.B.
6	
7	
8	

RESTRICTION

All tax maps created under the provisions of reappraisal legislation are the property of the State of West Virginia and the reproduction, copying, distribution or sale of such tax maps or any copies thereof without the written permission of the State Tax Commissioner is prohibited by law.

KEY MAP	
3	7
8	6
5	

KANAWHA COUNTY
 Office of Assessor
 CHARLESTON, WEST VIRGINIA

HANDLEY CORPORATION - 31
 Map No. 6

Date, Aerial Photography:
 Photo No:

Date, Map: 3-73
 Scale: 1"=100