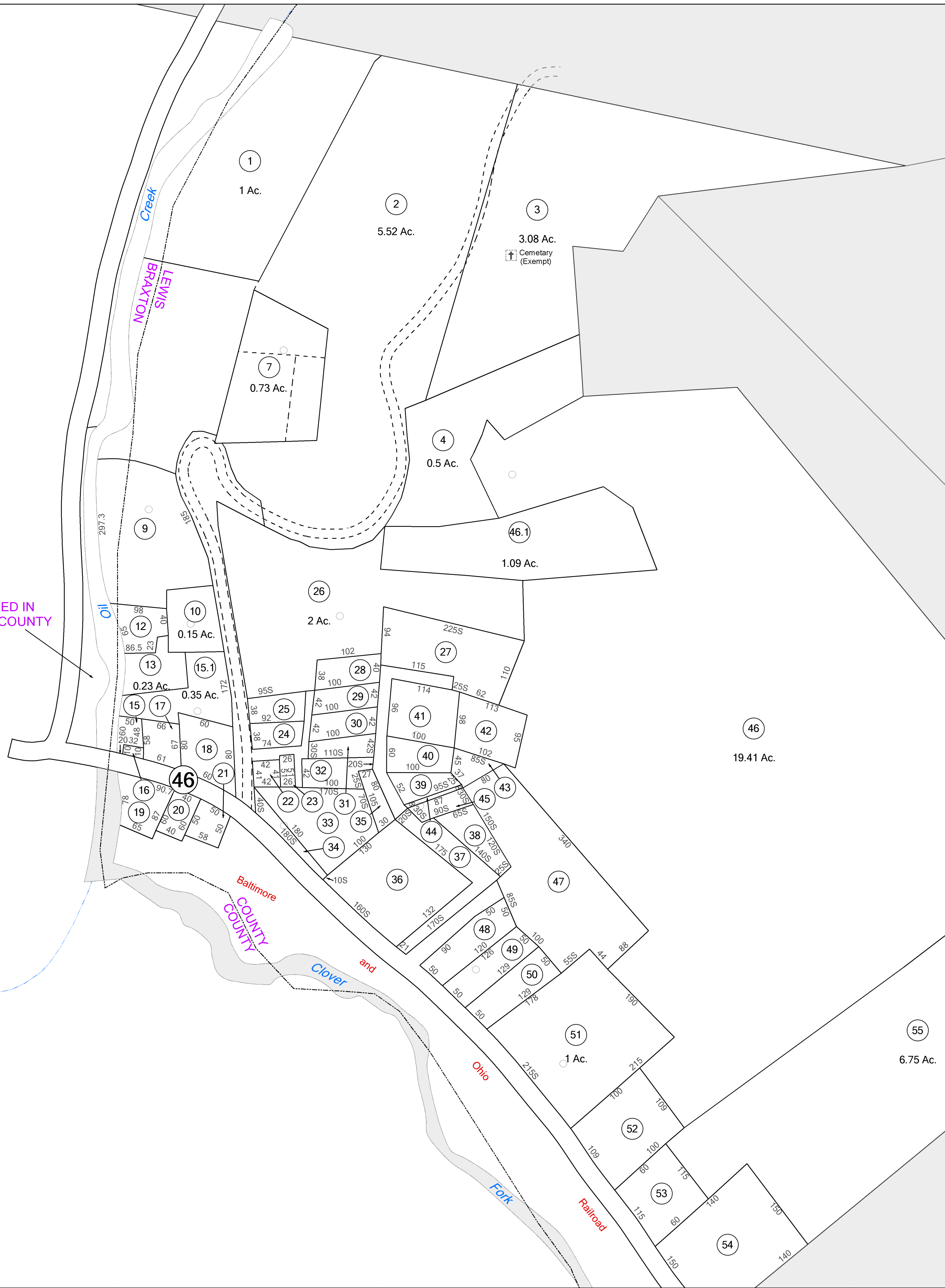


ASSESSED IN
BRAXTON COUNTY



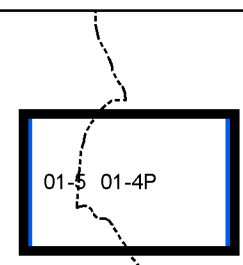
FOR TAX PURPOSES ONLY
LANDMARK
geospatial
A Division of Landmark Forestry LLC

Legend	
	District Boundary
	Previous Deed
	Property
	Road Easement
	Railroad Right of Way
	Road Right of Way
	River

Restriction	
	Deed lot Number (15)
	Parcel or Index Number (9)
	Unknown
	Improvement
	Cemetery
	Church
	Educational

REPRODUCTION OF TAX MAPS PROHIBITED
- It is unlawful to copy, photocopy, scan, photograph, or otherwise reproduce this tax map. Pursuant to the provisions of W.Va. CSR § 189-5-5 (2013) no person may reproduce, copy, distribute or sell copies of tax maps prepared by the counties without having first obtained the written permission of the Lewis County Assessor. In addition to other penalties and civil remedies, any person who, without the written permission of the Lewis County Assessor, reproduces, copies, distributes, or sells or who allows the reproduction, copying, distribution or sale of tax maps prepared by the Lewis County Assessor, shall be refused permission by the Lewis County Assessor or Assessor's agent to purchase tax maps in the future.

Revisions			
1	LANDMARK	1/1/2011	10
2		11	20
3		12	21
4		13	22
5		14	23
6		15	24
7		16	25
8		17	26
9		18	27
			28
			29
			30
			31
			32
			33
			34
			35
			36



LEWIS COUNTY
Assessor's Office
John L. Breen, Assessor
WESTON, WV

COLLINS SETTLEMENT
District 01 Map No. 5
Date of Publication: 1/27/2017
Scale: 1" = 100'