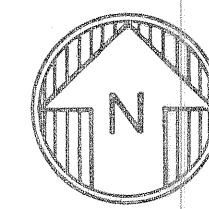
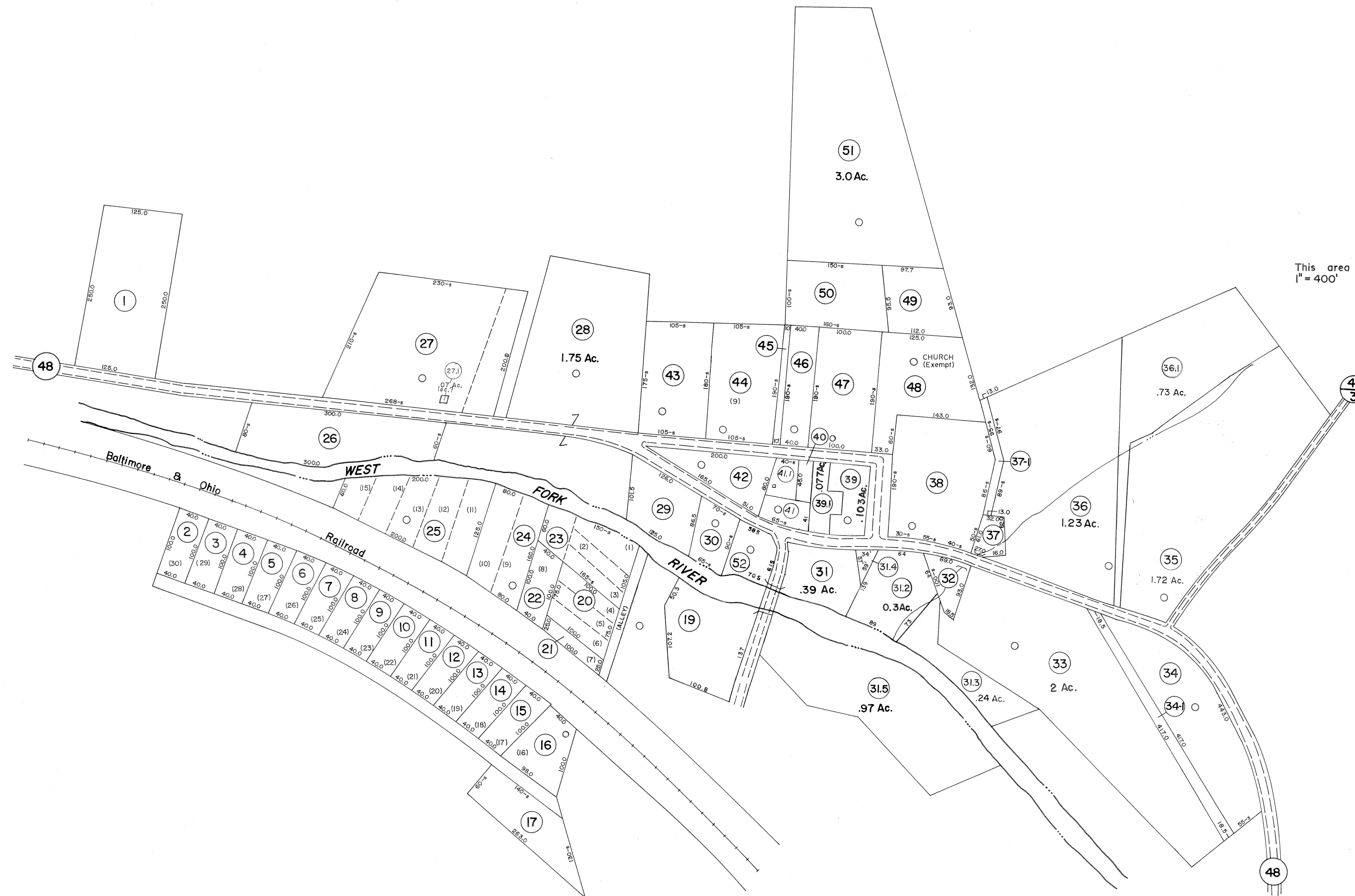


This area shown on map 7-P.  
1" = 400'

This area shown on map 8-P.  
1" = 400'

This area shown on map 8-P.  
1" = 400'



For Tax Purposes Only

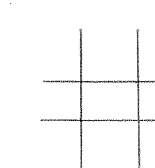
Prepared by  
VOGT, IVERS AND ASSOCIATES  
ENGINEERS-ARCHITECTS  
CHARLESTON, W.VA.  
CINCINNATI, OHIO

Property line ————  
Edge of pavement or roadway - - - - -  
Corporation line - - - - -  
District line - - - - -  
County line - - - - -

Original lot line - - - - -  
Deed lot number (15)  
Parcel or index number (99)  
Improvement o  
Railroad ————

Revisions		
1	PARCELS 34-1, 36-1 & 37-1	9
2	ADDED, 3-29-65.	10
3	6/28/76 J.C.	11
4	Revised 7-1-88 J.C.	12
5	To December 1983 C.P.	13
6	To 7-1-84 C.P.	14
7	REV. TO 1-1-89 NCS	15
8	3-15-98 JEB	16
		17
		18
		19
		20
		21
		22
		23
		24

KEY MAP



LEWIS COUNTY  
STATE OF WEST VIRGINIA  
Office of Assessor

DISTRICT COLLINS SETTLEMENT  
CRAWFORD

SHEET NO: 2

Date, Aerial Photography: 4-24-62 Date, Map: 8-26-64  
Photo No: LE 2-120 Scale: 1"=100'