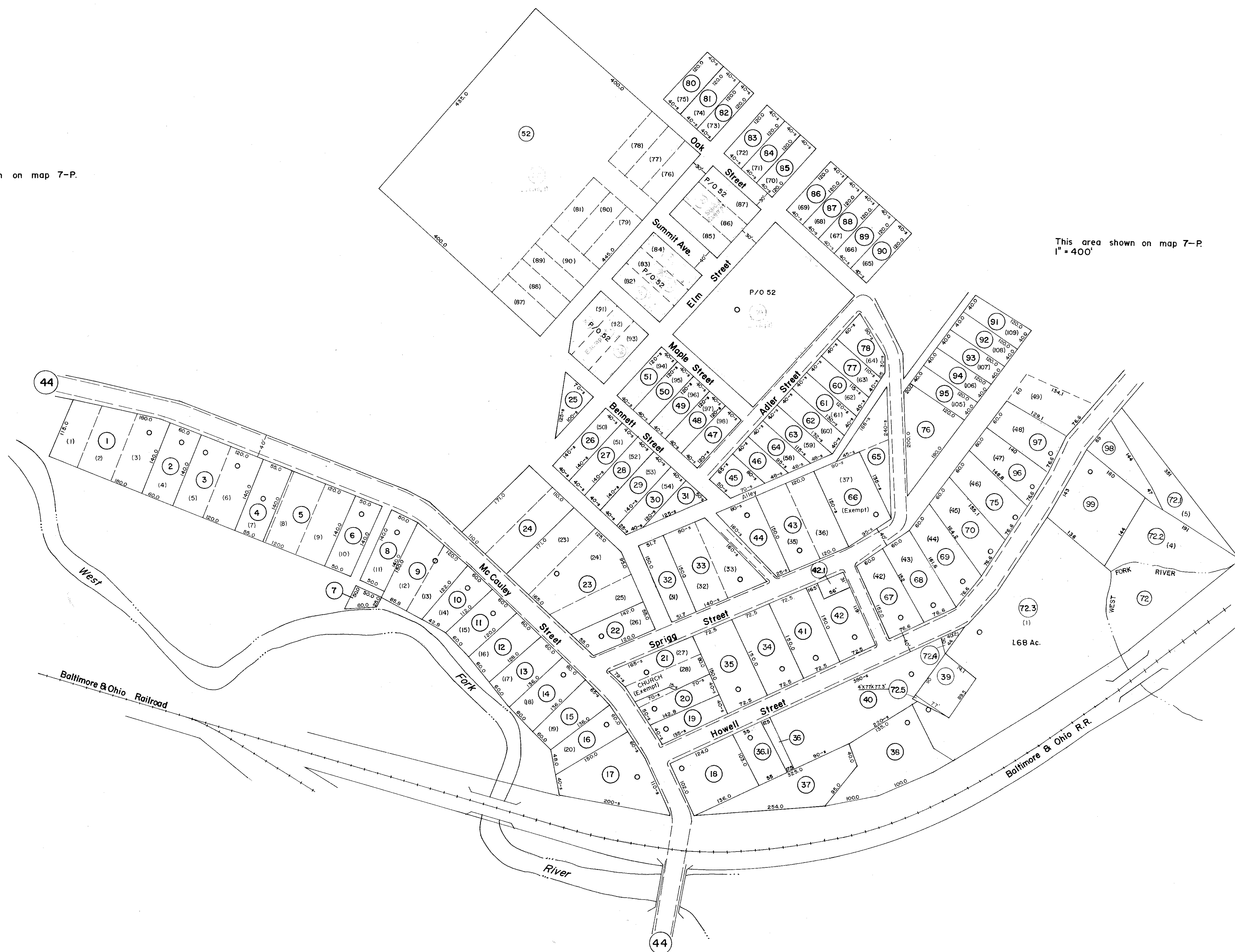
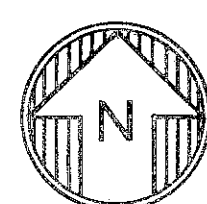


This area shown on map 7-P.
1" = 400'

This area shown on map 7-P.
1" = 400'



This area shown on map 7-P.
1" = 400'



For Tax Purposes Only

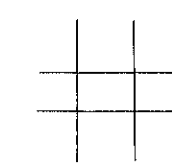
Prepared by
VOGT, IVERS AND ASSOCIATES
ENGINEERS-ARCHITECTS
CHARLESTON, W.VA.
CINCINNATI, OHIO

Property line ————
Edge of pavement or roadway ————
Corporation line - - - - -
District line - - - - -
County line - - - - -

Original lot line - - - - -
Deed lot number (15)
Parcel or index number (99)
Improvement (o)
Railroad

Revisions	
1	6/28/76 J.C.
2	Revised to P.O. 52
3	July 1975 J.P.L.
4	O.G.I.S. 4-15-96 J.E.B.
5	6-1-2000 J.E.B.
6	
7	
8	
9	
10	
11	
12	
13	
14	
15	
16	
17	
18	
19	
20	
21	
22	
23	
24	

KEY MAP



LEWIS COUNTY

STATE OF WEST VIRGINIA

Office of Assessor

DISTRICT COLLINS SETTLEMENT
WALKERSVILLE

SHEET NO: 3

Date, Aerial Photography: 4-25-62 Date, Map: 9-14-64
Photo No: LE 2-104 Scale: 1" = 100'