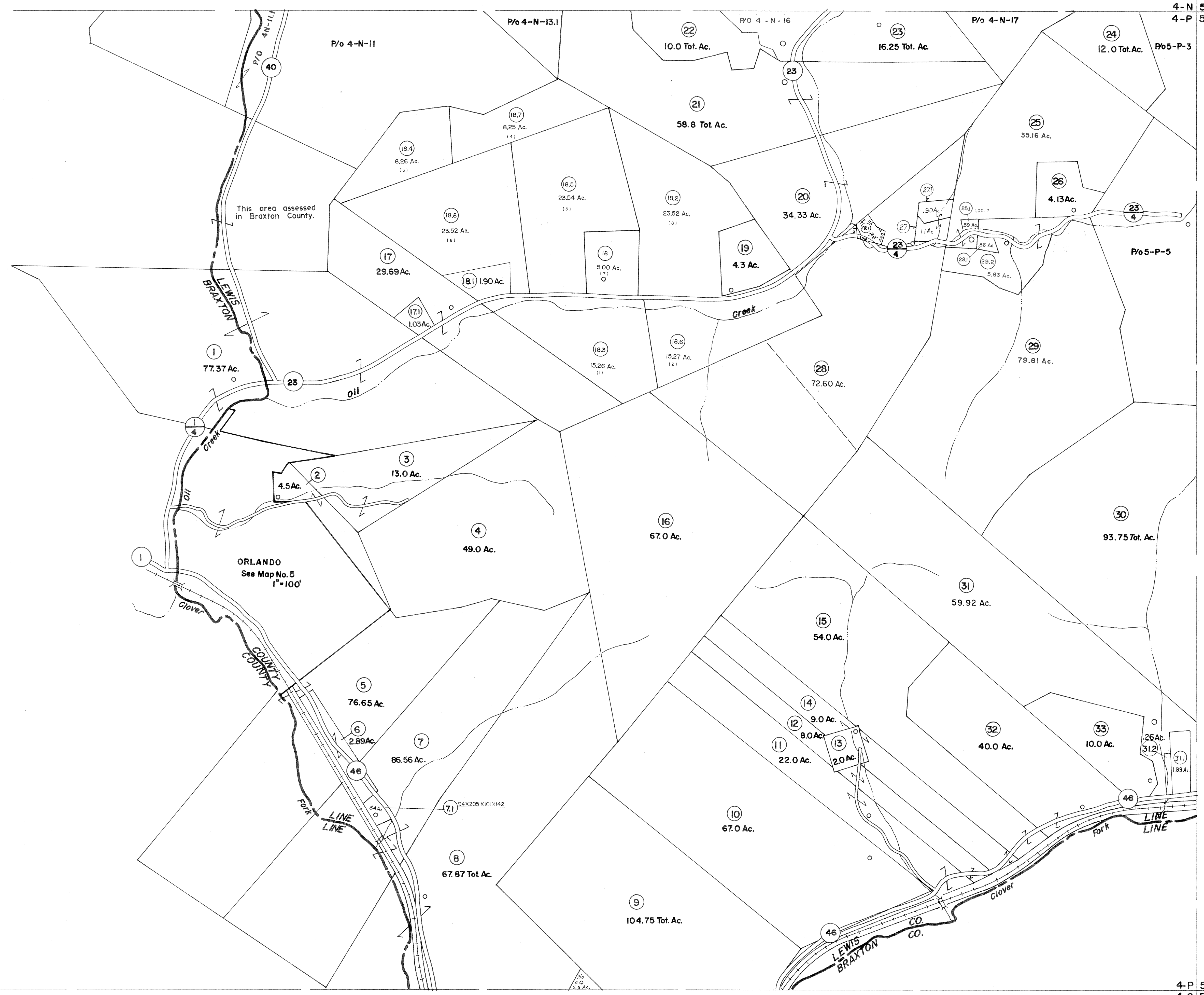


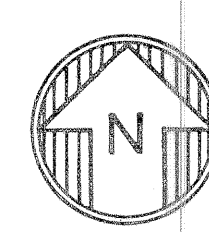
4-N
4-P

4-N 5-N
4-P 5-P



4-P
4-Q

4-P 5-P
4-Q 5-Q



For Tax Purposes Only

Prepared by
VOGT, IVERS AND ASSOCIATES
 ENGINEERS-ARCHITECTS
 CHARLESTON, W.VA.
 CINCINNATI, OHIO

Property line ————
 Edge of pavement or roadway ————
 Corporation line - - - - -
 District line - - - - -
 County line - - - - -

Original lot line - - - - -
 Deed lot number (15)
 Parcel or index number (19)
 Improvement (O)
 Railroad (R)

Revisions			
1	6/2/79	DAE	9
2	6/2/84	JEB	10
3	Revised to 7-1-81	JEB	11
4	To December 1983 C.P.	JEB	12
5	Revised to 7-1-87	JEB	13
6	REV. TO 1-1-89	NCS	14
7	O.G.I.S 4-15-96	J.E.B	15
8	3-15-98	J.E.B	16
9	6-15-2002	J.E.B	17
10	3-15-2003	JEB	18
11			19
12			20
13			21
14			22
15			23
16			24

KEY MAP

4-N 5-N
 4-P 5-P
 4-Q 5-Q

LEWIS COUNTY

STATE OF WEST VIRGINIA

Office of Assessor

DISTRICT
COLLINS SETTLEMENT

SHEET NO: **4 - P**

Date, Aerial Photography: 4-24-62
 Photo No: LE-2-37
 Date, Map: 5-22-63
 Scale: 1" = 400'