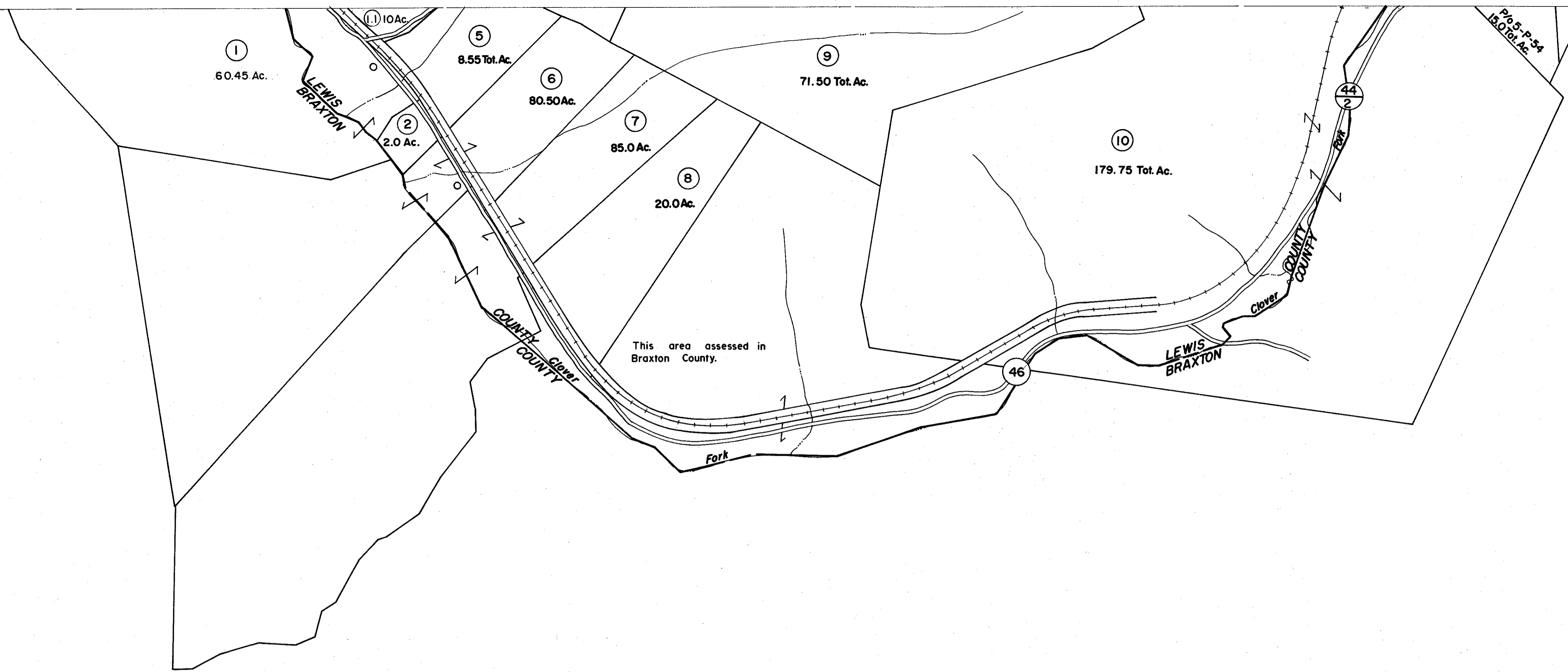


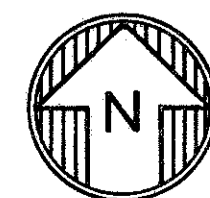
4-P5-P
4-Q5-Q

5-P 6-P
5-Q 6-Q



4-Q5-Q

5-Q 6-Q
6-R



For Tax Purposes Only
 Prepared by
VOGT, IVERS AND ASSOCIATES
 ENGINEERS-ARCHITECTS
 CHARLESTON, W.VA.
 CINCINNATI, OHIO

Property line	—————
Edge of pavement or roadway	- - - - -
Corporation line	—————
District line	—————
County line	—————

Original lot line	—————
Deed lot number	(15)
Parcel or index number	⊙
Improvement	⊙
Railroad	—+—+—+—

Revisions	
1 PARCELS 3 & 4 DELETED	9
2 10-20-64	10
3 Revised to 7-1-81	11
4 Revised to 7-1-81	12
5	13
6	14
7	15
8	16
	17
	18
	19
	20
	21
	22
	23
	24

KEY MAP

4-P5-P	6-P
4-Q5-Q	6-Q
	6-R

LEWIS COUNTY
 STATE OF WEST VIRGINIA
 Office of Assessor

DISTRICT
COLLINS SETTLEMENT

SHEET NO: 5-Q

Date, Aerial Photography: 4-25-62 Date, Map: 9-16-64
 Photo No: LE-2-70 Scale: 1" = 400'