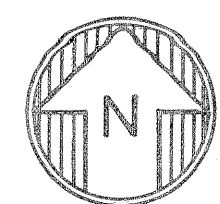
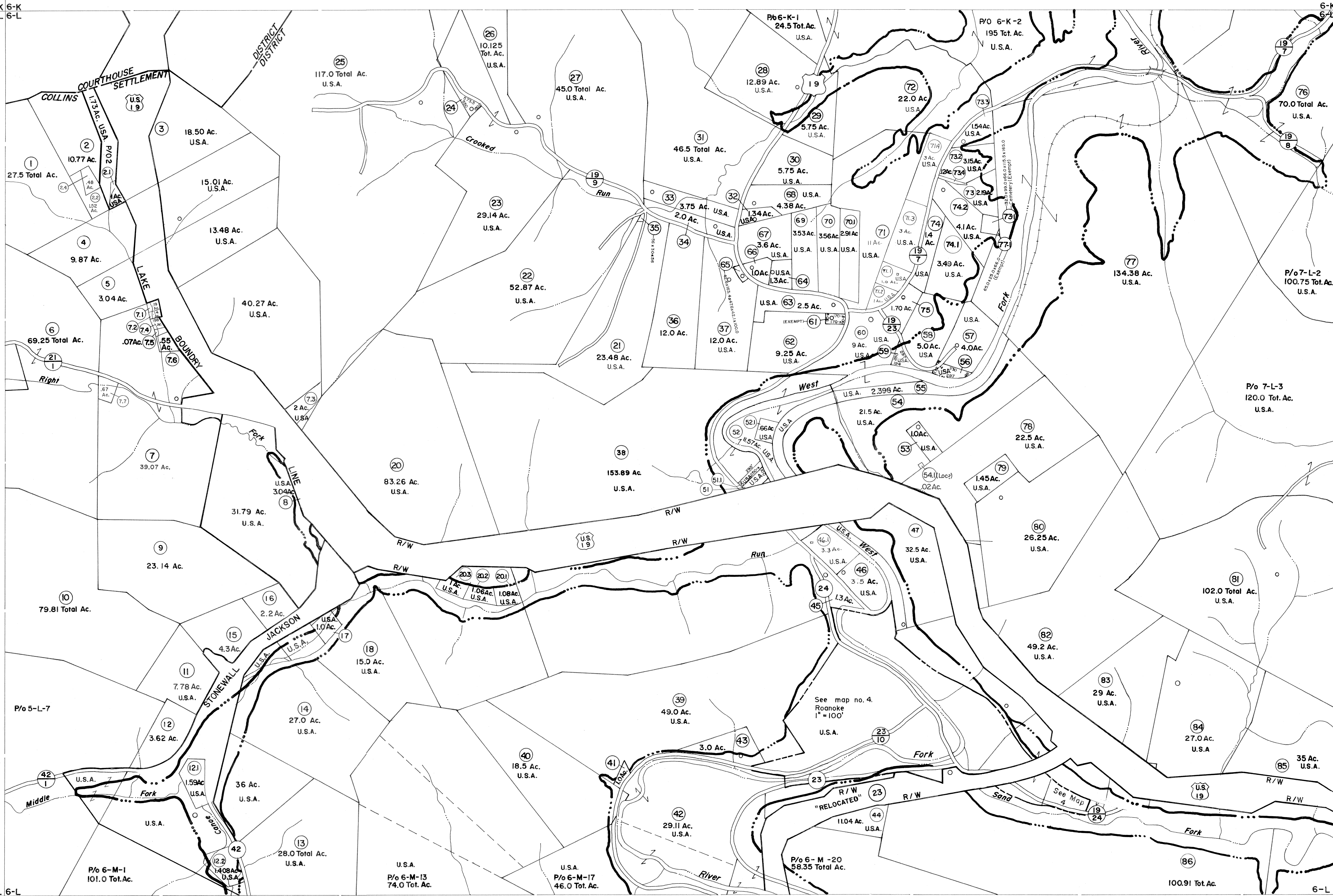


5-K 6-K
5-L 6-L

5-L 6-L
5-M 6-M

6-K 7-K
6-L 7-L

6-L 7-L
6-M 7-M



For Tax Purposes Only

Prepared by
VOGT, IVERS AND ASSOCIATES
 ENGINEERS-ARCHITECTS
 CHARLESTON, W.VA.
 CINCINNATI, OHIO

Property line	—
Edge of pavement or roadway	—
Corporation line	—
District line	—
County line	—

Original lot line	---
Deed lot number	(15)
Parcel or index number	99
Improvement	o
Railroad	—

Revisions		
1	PARCELS 71-1, 73-1 & 77-1	9
2	ADDED, 3-29-65.	10
3	3-74 P.A.M.	11
4	4/22/76	12
5	Revised 6-1-81	13
6	To December 1983 C.P.	14
7	REV. TO 7-1-86 NCS	15
8	Revised 6-7-87 JEB	16
9	REV. TO 1-1-89 NCS	17
10	3-15-2003 JEB	18
11	4-1-07 JEB	19
12		20
13		21
14		22
15		23
16		24

KEY MAP

5-K 6-K 7-K
 5-L 6-L 7-L
 5-M 6-M 7-M

LEWIS COUNTY
 STATE OF WEST VIRGINIA
 Office of Assessor

DISTRICT
COLLINS SETTLEMENT

SHEET NO: 6-L

Date, Aerial Photography: 4-25-62
 Photo No: LE-2-77

Date, Map: 11-2-64
 Scale: 1" = 400'