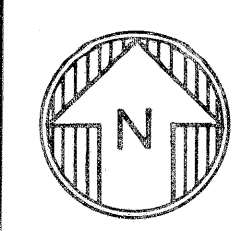
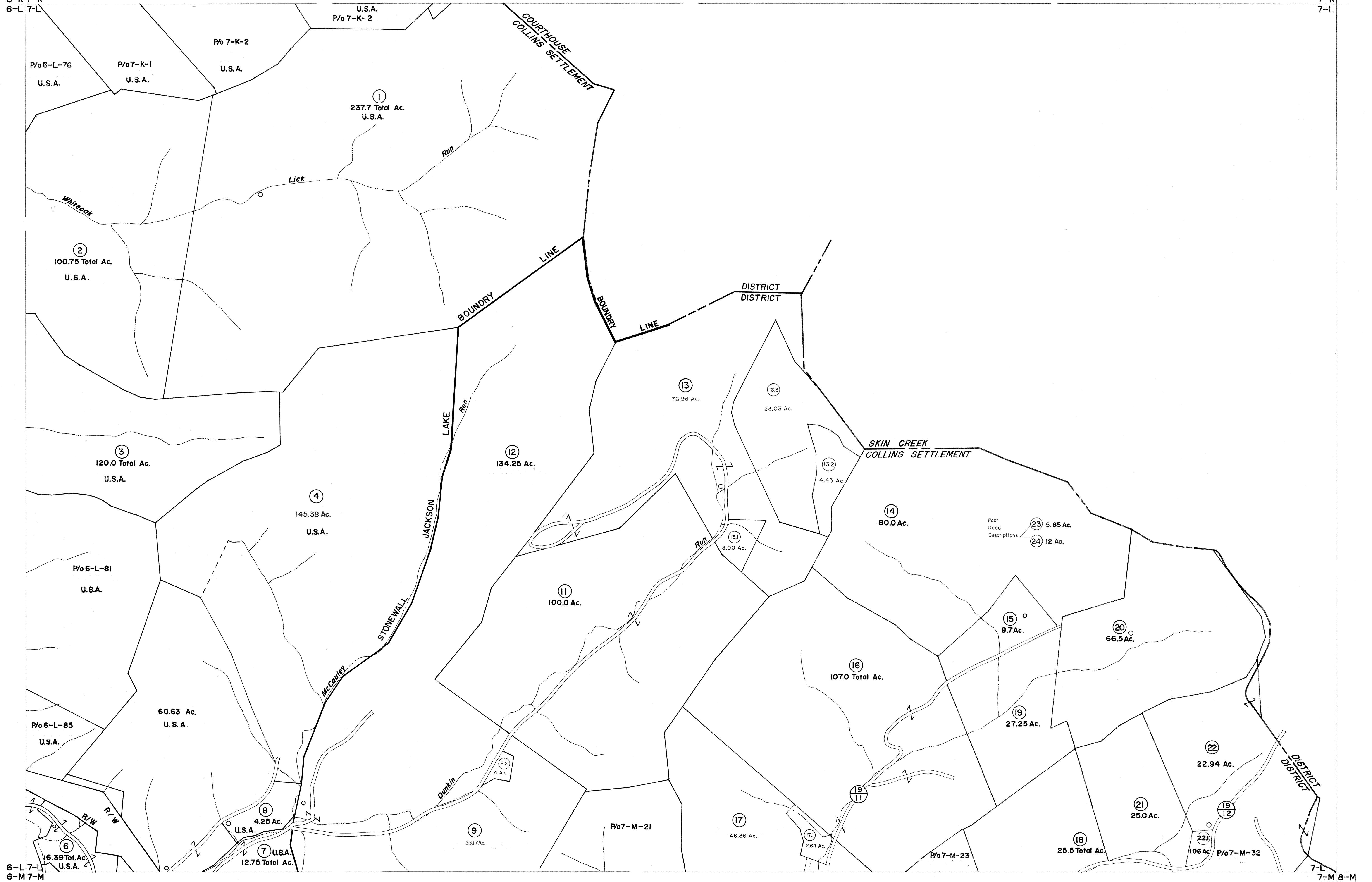


6-K 7-K
6-L 7-L

7-K
7-L



For Tax Purposes Only
 Prepared by
VOGT, IVERS AND ASSOCIATES
 ENGINEERS-ARCHITECTS
 CHARLESTON, W.VA.
 CINCINNATI, OHIO

Property line	—————
Edge of pavement or roadway	—————
Corporation line	—————
District line	—————
County line	—————

Original lot line	—————
Deed lot number	(15)
Parcel or index number	(22)
Improvement	o
Railroad	—————

Revisions	
1	3-74 PAM
2	6/28/76 J.C.
3	Revised 6-7-81 J.C.
4	To December 1983 C.P.
5	OGIS 3-6-92 TL
6	6-1-2000 J.E.B.
7	4-15-2001 J.E.B.
8	8-15-2004 J.E.B.
9	5-1-06 J.E.B.
10	
11	
12	
13	
14	
15	
16	
17	
18	
19	
20	
21	
22	
23	
24	

KEY MAP
 6-K-7-K
 6-L-7-L
 6-M-7-M-8-M

LEWIS COUNTY
 STATE OF WEST VIRGINIA
 Office of Assessor

DISTRICT
COLLINS SETTLEMENT
 SHEET NO: 7-L
 Date, Aerial Photography: 4-25-62 Date, Map: 5-22-64
 Photo No: LE-2-101 Scale: 1" = 400'