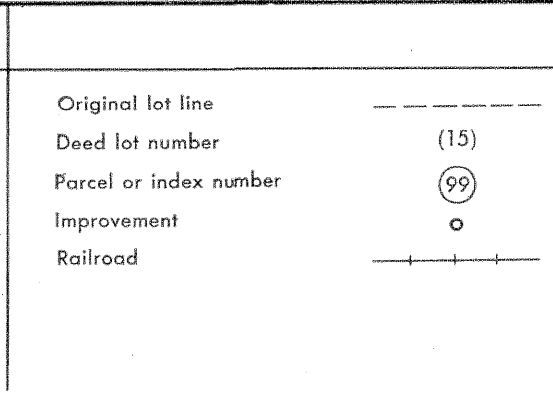
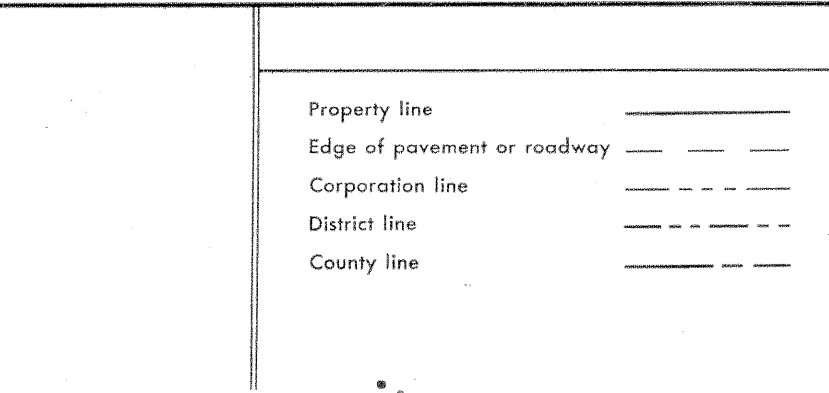


For Tax Purposes Only

Prepared by
VOGT, IVERS AND ASSOCIATES
 ENGINEERS-ARCHITECTS
 CHARLESTON, W.VA.
 CINCINNATI, OHIO



Revisions			
1	PARCEL 9-I ADDED 10-13-64	9	REV. TO 7-1-86 NCS
2	PARCELS 10-I, 21-I, 24-I & 26-I	10	REVISED TO 7-1-87 J.E.B.
3	ADDED 11-2-64	11	REV. TO 1-1-89 NCS
4	3-74 PAM	12	0915 3-6-92 TL
5	GOLDEN 6/29/76 T.G.	13	0.6.1.S 4-15-96 J.E.B.
6	Revised to 11-81 J.E.B.	14	3-15-98 J.E.B.
7	To December 1983 C.P.	15	6-1-2000 J.E.B.
8	To 7-1-84 C.P.	16	4-15-2001 J.E.B.

KEY MAP

6-Q 7-Q 8-Q
 6-R 7-R 8-R
 6-S 7-S 8-S

LEWIS COUNTY
 STATE OF WEST VIRGINIA
 Office of Assessor

DISTRICT
COLLINS SETTLEMENT

SHEET NO: 7-R

Date, Aerial Photography: 4-25-62
 Photo No: LE-2-106

Date, Map: 8-31-64
 Scale: 1" = 400'